



***Animal  
House***

---



**Swiss albino mouse**

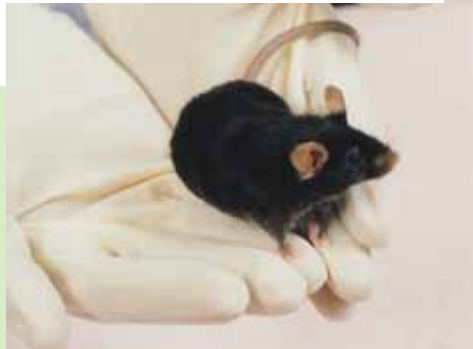
- Adults used for raising immune sera and testing of vaccine.
- Infants used for isolation of viruses and preparation of antigen.



Isolator for work on small animals



Individually ventilated mouse cages



*C57BL/6 mouse*

Mostly used in immunological research and to know the susceptibility to different viruses.



*C3H / HeJ mouse*



*Rat (Rattus norvegicus)*

Used to find out the susceptibility to different viruses and transmission studies.



*Hamster (Mesocricetus auratus)*



Athymic Nude mouse - Commonly used in immunology, oncology and testing of tumorigenicity of cell lines.



Guinea pig (*Cavia porcellus*)  
Used for raising immune serum.  
Source of complement in CF test.  
RBC's are used in diagnosis of influenza and rotavirus.

Monkeys are used for transmission experiments, vaccine evaluation and preparation of primary cell cultures.



Rabbit (*Oryctolagus cuniculus*)  
Used for raising immune sera against different viruses



Newly-constructed monkey-run



Geese (*Anser anser*)  
RBCs are used in  
diagnosis of flavivirus  
infections.



Fowl (*Gallus gallus*)  
RBC's are used in  
diagnosis of influenza  
virus infection.



Sheep (*Ovis aries*)  
RBCs are used in  
diagnostic virology and  
blood is used in  
bacteriological work.