

## POPULATION BASED CANCER REGISTRY, SIKKIM STATE Sir Thutob Namgyal Memorial Hospital, Gangtok

**Dr H. Pradhan**, Director cum Medical Superintendent

**Dr Yogesh Verma**, Principal Investigator

**Dr Prakash Pradhan**, Co-Principal Investigator

The Population Based Cancer Registry was commenced in July, 2003 with the main objective of assessing the magnitude and type of various cancers in Sikkim. The registry was started with the support of the Regional Medical Centre, North East Region, Dibrugarh under the National Cancer Registry Programme, of the ICMR.

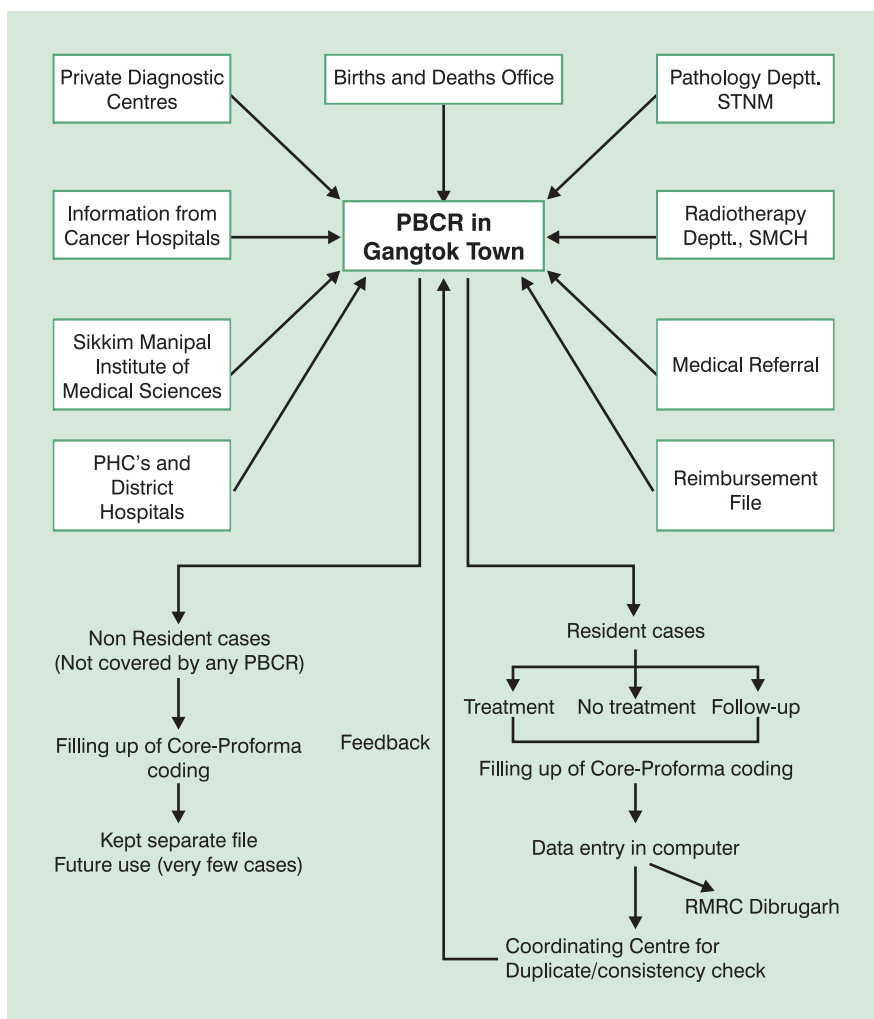
Sikkim is one of the North-Eastern States of India and is bordered by three international borders. China in the North, Nepal in the West and Bhutan in the East. The terrain of Sikkim is mountainous and the population sparse and scattered. The total population as per the 2001 census was 5,40,851/-. Sikkim is situated between Latitude 27° 46"N to 28.07° 48"N and Longitude 88 00' 58"E to 88 55'25"E. The Population Based Cancer Registry covers the entire state of Sikkim with an area of 7,096 sq.km.

The registration of cancer cases is done by active registration. The source of data collection include all the government hospitals, private clinics, the Sikkim Manipal Institute of Medical Sciences, primary health centres and the Birth and Death record office.

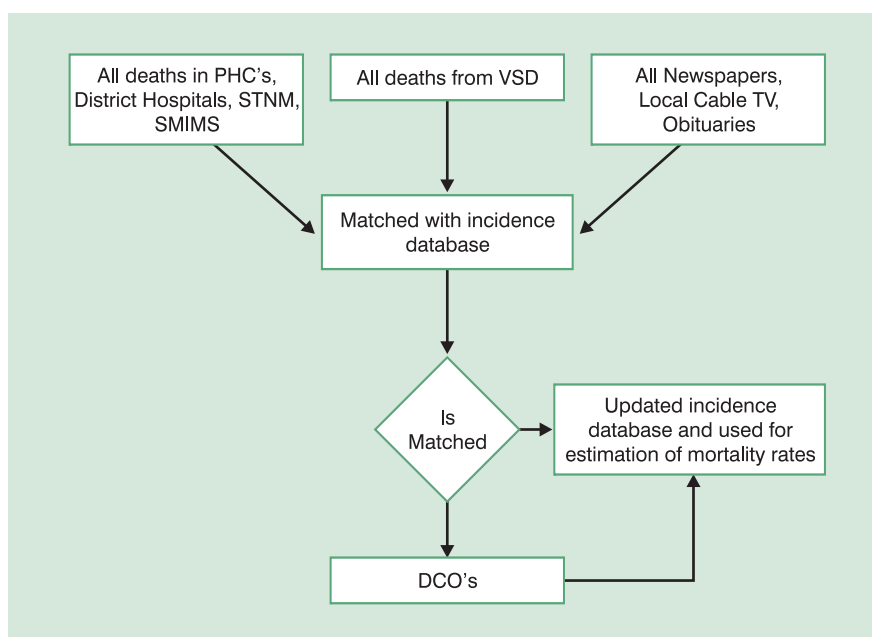
Sikkim does not have a dedicated cancer treatment center and hence most of the patients diagnosed with cancer are sent out for treatment to Kolkata, New Delhi and Mumbai. The Government of Sikkim provides financial assistance to domicile and government employees of the state. Because of this unique referral system the registry staff is able to register cases from the referral system which maintains a single register for the whole state. Over a period of time most of the patients registered are interviewed to collect socio-demographic details. Information on clinical items such as stage of disease, treatment details, primary site of tumor (when not available) are obtained by the Social Investigator from the patient when they return from the cancer treatment facilities.

Information on death is collected from the office of the Births and Deaths located at Gangtok. However where the details like name, cause of death is not available Social Investigator visits all the government hospitals and PHCs of the state to update the records. All the deaths in the state are compiled and matched with the incident data. Mortality data is also collected from obituary column of different local newspapers and matched with our incident cancer cases.

### Flow Chart A : Cancer Incidence Data Collection



### Flow Chart B : Cancer Mortality Data Collection



\*VSD:- Vital Statistic Department, DCO:- Death Certificate only, STNM:- Sir Thutop Namgyal Memorial Hospital, SMIMS: Sikkim Manipal Institute of Medical Sciences.

The registry enjoys good cooperation from all health care facilities in Sikkim with thirty three sources of registration. To update our database and for the sake of completeness of core proforma the registry writes to cancer hospitals with patient details for further information on identification of primary site, clinical extent of disease and treatment provided.

The staff of the cancer registry including the Principal Investigator have been trained in cancer case abstraction and coding.

The difficulty faced by the cancer registry is that a number of cases are diagnosed by cytology on a metastatic site who do not go out for treatment. This leads to a decrease in the histology confirmed cases and no identification of Primary Site of Tumor.

Communication with certain cancer facilities in Mumbai (Tata Memorial Hospital), Kolkata (Cancer Welfare Home) has been established and they have responded to our request. However most of the patients diagnosed as having cancer go to New Delhi, we plan to establish link with the cancer hospitals and get further information on cases referred from Sikkim.

The Cancer Registry in Sikkim is in its infancy and the registry staff is developing its own strategies which are specific to the state to ensure completeness.

During the period 2003-2004 a total number of 637 incident cases have been registered with 314 males and 323 females. The male female ratio of incident cases being 0.9 : 1. The average annual crude rate (CR) and Age Adjusted rate (AR) for male is 50.1 and 73.6 and for females 59.0 and 88.2 respectively. The common cancers among males were cancers of stomach (18.5%) followed by oesophagus (10.19%), liver (7.96%), larynx (7.01%) and lung (6.69%). Among females the leading sites of cancer were breast (14.24%) followed by cervix (12.07%), oesophagus (10.22%), lung (5.26%) and stomach (4.33%)

## ACKNOWLEDGEMENTS

Population Based Cancer Registry would like to acknowledge the support of the Department of Health Care, Human Service and Family Welfare, Government of Sikkim, Registrar of Births and Deaths. All the doctors and staff of Sir Thutob Namgyal Memorial Hospital, all departments of Sikkim Manipal Institute of Medical Sciences, Tadong, Private clinics and Laboratories, State Library, Cancer Welfare Home, Kolkata, Tata Memorial Hospital, Mumbai for their kind support.

### *Registry Staff (PBCR), Gangtok*

<b>Dr. Rachana Lamichaney</b>	:	Research Officer
<b>Mr. Saroj Deep Sapkota</b>	:	Computer Programmer
<b>Mr. Prakash Sundas</b>	:	Social Investigator
<b>Mr. Pranay Giri</b>	:	Social Investigator

Figure SKM - 1

Population Pyramid showing Age Distribution: 2003-2004

Sikkim State

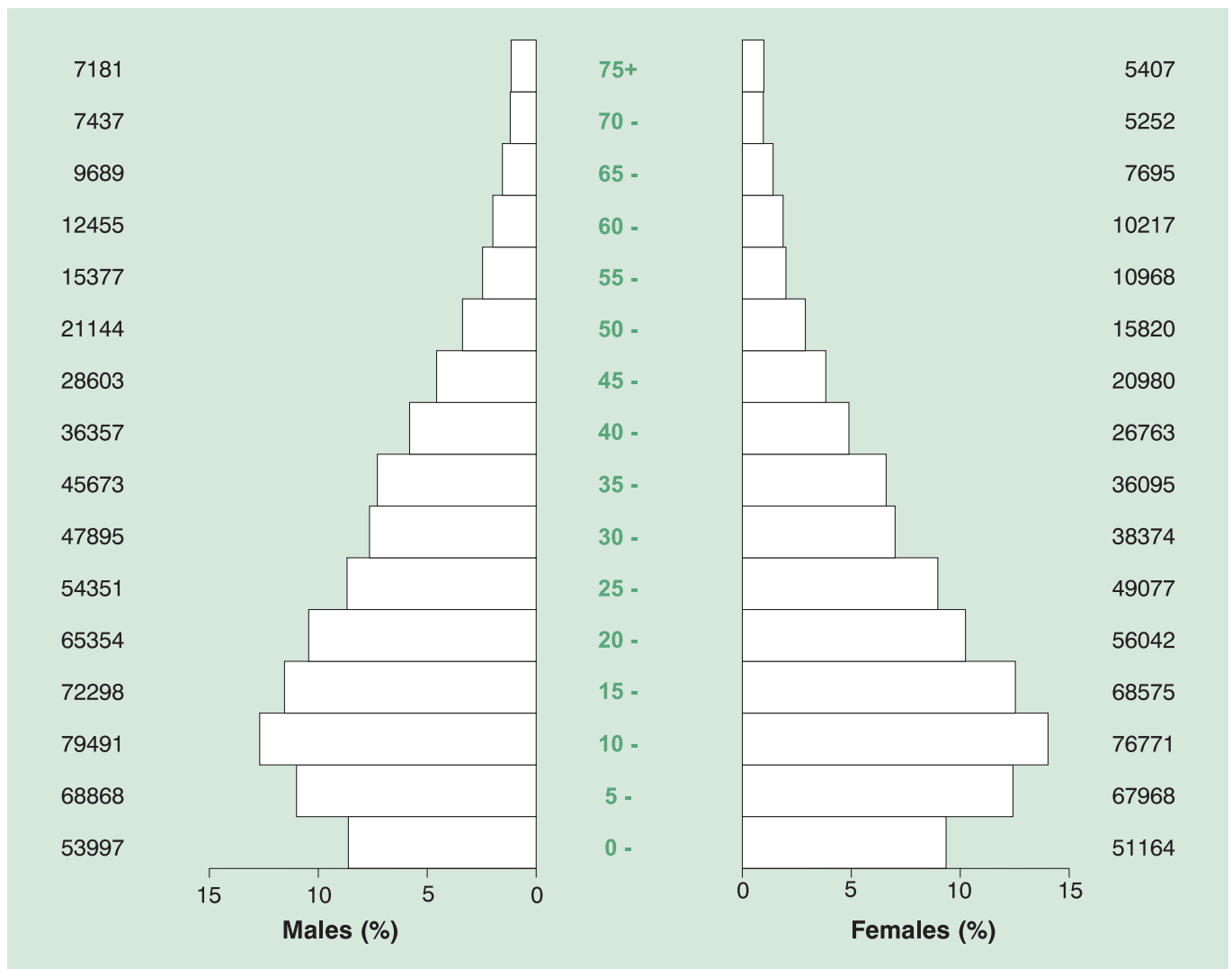


TABLE: SKM - 1

## Population by Five Year Age Group and Gender: 2003-2004

*Number and Relative Proportion (%)*

## Sikkim State

Age Group	MALES		FEMALES		TOTAL	
	Number	%	Number	%	Number	%
0-4	53997	8.62	51164	9.35	105161	8.96
5-9	68868	11.00	67968	12.42	136836	11.66
10-14	79491	12.69	76771	14.03	156262	13.32
15-19	72298	11.55	68575	12.53	140873	12.01
20-24	65354	10.44	56042	10.24	121396	10.35
25-29	54351	8.68	49077	8.97	103428	8.81
30-34	47895	7.65	38374	7.01	86269	7.35
35-39	45673	7.29	36095	6.60	81768	6.97
40-44	36357	5.81	26763	4.89	63120	5.38
45-49	28603	4.57	20980	3.83	49583	4.23
50-54	21144	3.38	15820	2.89	36964	3.15
55-59	15377	2.46	10968	2.00	26345	2.25
60-64	12455	1.99	10217	1.87	22672	1.93
65-69	9689	1.55	7695	1.41	17384	1.48
70-74	7437	1.19	5252	0.96	12689	1.08
75+	7181	1.15	5407	0.99	12588	1.07
<b>Total</b>	<b>626170</b>	<b>100.0</b>	<b>547168</b>	<b>100.00</b>	<b>1173338</b>	<b>100.0</b>

**TABLE : SKM- 2**  
**Main Sources of Registration of Incident Cases of Cancer : 2003-2004**  
**Sikkim State**

Name of the Institution (Source Code)	Number	%
STNM Hospital, Gangtok (1)	445	69.86
Births and Deaths, Kazi Road, Gangtok (7)	47	7.38
Private Clinic (32)	47	7.38
CRH, Tadong (2)	31	4.87
District Hospital, Namchi (6)	18	2.83
District Hospital, Gyalshing (4)	8	1.26
District Hospital, Singtam (3)	6	0.94
District Hospital, Mangan (5)	5	0.78
Cancer Welfare Home, Thakurpukur (34)	4	0.63
Rangpo PHC (8)	3	0.47
Sang PHC (10)	2	0.31
Pakyong PHC (12)	2	0.31
Soreng PHC (17)	2	0.31
Rinchenpong PHC (19)	2	0.31
Dentam PHC (20)	2	0.31
Yang Yang PHC (30)	1	0.16
Others (999)	12	1.88
<b>Total All Sources</b>	<b>637</b>	<b>100.00</b>

*The numbers and proportion listed are the minimum number of cases. Institutions could have registered / reported more cases, since duplicate registrations and non-resident/registry cases are not included.*

**TABLE SKM-3 (a): Number of Incident Cancers by Five Year Age Group and Site (ICD-10):  
2003-2004 – Males**

*% = Relative Proportion of Cancers of All Sites.*

**Sikkim State**

ICD-10	Site	0-4	5-9	10-14	15-19	20-24	25-29	30-34	35-39	40-44	45-49	50-54	55-59	60-64	65-69	70-74	75+	Unkn	Total	%
C00	Lip	-	-	-	-	-	-	-	-	-	-	-	-	-	-	-	-	-	-	-
C01-02	Tongue	-	-	-	-	-	-	-	-	2	1	-	-	2	3	-	-	-	8	2.55
C03-06	Mouth	-	-	-	-	-	-	-	-	2	2	-	1	1	-	-	-	-	6	1.91
C07-8	Salivary Gland	-	-	-	-	-	-	-	-	-	1	-	-	-	-	-	-	-	2	0.64
C09	Tonsil	-	-	-	-	-	-	-	-	-	-	1	-	-	-	-	-	1	1	0.32
C10	Oth. Oropharynx	-	-	-	-	-	-	-	-	-	-	-	-	-	-	-	-	-	-	-
C11	Nasopharynx	-	-	-	1	-	1	1	-	2	4	3	2	2	2	-	-	1	19	6.05
C12-13	Hypopharynx	-	-	-	-	-	-	-	-	-	-	2	-	1	2	-	2	-	7	2.23
C14	Pharynx Unspecified	-	-	-	-	-	-	-	-	-	-	-	1	-	-	-	-	1	2	0.64
C15	Oesophagus	-	-	-	-	-	-	-	-	-	1	2	10	4	4	3	4	4	32	10.19
C16	Stomach	-	-	-	-	2	-	1	-	5	2	6	7	12	9	8	2	3	57	18.15
C17	Small Intestine	-	-	-	-	-	-	-	-	-	-	-	-	-	-	-	-	-	-	-
C18	Colon	-	-	-	-	-	-	-	-	-	-	-	1	-	-	1	-	-	2	0.64
C19-20	Rectum	-	-	-	-	-	1	-	-	-	1	-	-	1	1	-	1	-	5	1.59
C21	Anus & Anal Canal	-	-	-	-	-	-	-	-	-	-	-	-	1	-	-	-	1	2	0.64
C22	Liver	-	-	-	-	-	-	-	1	-	4	5	1	5	3	4	-	2	25	7.96
C23-24	Gallbladder etc.	-	-	-	-	-	-	-	-	-	-	-	-	-	1	1	-	-	2	0.64
C25	Pancreas	-	-	-	-	-	-	-	-	-	1	-	-	1	-	-	-	1	3	0.96
C30-31	Nose, Sinuses etc.	-	-	-	-	-	-	-	-	-	-	-	-	1	-	-	-	-	1	0.32
C32	Larynx	-	-	-	-	-	-	-	1	-	2	1	1	7	1	2	3	4	22	7.01
C33-34	Lung etc.	-	-	-	-	-	-	-	-	-	2	2	2	3	2	5	3	2	21	6.69
C37-38	Other Thoracic Organs	-	-	-	-	-	-	-	-	1	-	-	-	-	-	-	2	-	3	0.96
C40-41	Bone	-	-	-	-	-	1	-	-	-	1	-	1	-	-	-	1	-	4	1.27
C43	Melanoma of Skin	-	-	-	-	-	-	-	-	-	-	-	-	-	3	-	2	-	5	1.59
C44	Other Skin	-	-	-	-	1	-	-	-	-	-	-	-	-	-	-	-	-	1	0.32
C45	Mesothelioma	-	-	-	-	-	-	-	-	-	-	-	-	-	-	-	-	-	-	-
C46	Kaposi Sarcoma	-	-	-	-	-	-	-	-	-	-	-	-	-	-	-	-	-	-	-
C47 + C49	Conn. & Soft Tissue	-	-	-	1	-	1	-	2	-	1	-	-	-	-	-	-	-	5	1.59
C50	Breast	-	-	-	-	-	-	-	-	-	1	-	1	-	-	-	-	-	2	0.64
C60	Penis	-	-	-	-	-	-	-	-	-	-	-	-	1	1	1	-	-	3	0.96
C61	Prostate	-	-	-	-	-	-	-	-	-	-	-	-	-	1	2	-	-	3	0.96
C62	Testis	-	-	-	-	-	-	1	-	-	1	-	-	-	-	-	-	-	2	0.64
C63	Other Male Genital	-	-	-	-	-	-	-	-	-	-	-	-	-	-	-	-	-	-	-
C64	Kidney etc.	1	-	-	-	-	-	-	-	-	-	-	-	-	-	-	1	1	3	0.96
C65	Renal Pelvis	-	-	-	-	-	-	-	-	-	-	-	-	-	-	-	-	-	-	-
C66	Ureter	-	-	-	-	-	-	-	-	-	-	-	-	-	-	-	-	-	-	-
C67	Bladder	-	-	-	-	-	-	-	-	-	1	1	-	-	2	-	1	-	5	1.59
C68	Uns. Urinary Organs	-	-	-	-	-	-	-	-	-	-	-	-	-	-	-	-	-	-	-
C69	Eye	-	-	-	-	-	-	-	-	-	-	-	-	-	-	-	-	-	-	-
C70-72	Brain, Nervous System	-	-	-	-	-	-	-	1	-	1	1	1	1	-	-	-	2	7	2.23
C73	Thyroid	-	-	-	-	-	-	-	-	-	-	1	-	-	-	1	2	-	4	1.27
C74	Adrenal Gland	-	-	-	-	-	-	-	-	-	-	-	-	-	-	-	-	-	-	-
C77	Sec Lymph Nodes	-	-	-	-	-	-	-	-	-	-	1	-	-	1	-	-	1	3	0.96
C78	Sec Resp & Digestive	-	-	-	-	-	-	-	-	-	-	-	-	-	-	-	-	-	-	-
C79	Sec Others	-	-	-	-	-	-	-	-	-	-	-	-	-	-	-	-	-	-	-
C81	Hodgkins Disease	-	-	-	-	-	-	-	-	-	-	-	-	-	-	-	-	-	-	-
C82-85, C96	NHL	-	-	-	-	-	-	-	-	-	1	-	-	-	-	-	-	1	2	0.64
C90	Multiple Myeloma	-	-	-	-	-	-	-	-	-	-	-	-	-	1	-	-	-	1	0.32
C91	Lymphoid Leuk.	-	-	-	-	1	-	-	-	-	-	-	-	-	-	-	-	-	1	0.32
C92-94	Myeloid Leukaemia	-	2	-	-	-	-	1	-	1	-	1	-	-	-	-	-	-	5	1.59
C95	Leukaemia Uns	-	-	-	-	-	-	-	-	1	-	-	-	-	-	-	-	1	2	0.64
O&U	Other and Uns	-	-	-	-	-	-	1	-	3	3	5	3	8	2	3	6	2	36	11.46
	<b>All Sites</b>	<b>1</b>	<b>2</b>	<b>-</b>	<b>2</b>	<b>4</b>	<b>4</b>	<b>5</b>	<b>5</b>	<b>17</b>	<b>31</b>	<b>32</b>	<b>32</b>	<b>51</b>	<b>39</b>	<b>31</b>	<b>30</b>	<b>28</b>	<b>314</b>	<b>100.00</b>

**TABLE SKM-3 (b): Number of Incident Cancers by Five Year Age Group and Site (ICD-10):  
2003-2004 – Females**

*% = Relative Proportion of Cancers of All Sites.*

**Sikkim State**

ICD-10	Site	0-4	5-9	10-14	15-19	20-24	25-29	30-34	35-39	40-44	45-49	50-54	55-59	60-64	65-69	70-74	75+	Unkn	Total	%
C00	Lip	-	-	-	-	-	-	-	-	-	-	-	-	-	-	-	-	-	-	-
C01-02	Tongue	-	-	-	-	1	-	-	-	-	1	-	1	-	1	-	-	-	4	1.24
C03-06	Mouth	-	-	-	-	-	-	-	-	1	-	-	-	-	-	-	-	1	2	0.62
C07-8	Salivary Gland	-	-	-	-	1	2	-	-	-	1	-	1	-	-	-	-	1	6	1.86
C09	Tonsil	-	-	-	-	-	-	-	-	-	-	1	-	1	1	-	-	-	3	0.93
C10	Oth. Oropharynx	-	-	-	-	-	-	-	-	-	-	-	-	-	-	-	-	-	-	-
C11	Nasopharynx	-	-	-	-	2	2	1	1	1	1	-	1	-	-	-	-	1	10	3.10
C12-13	Hypopharynx	-	-	-	-	-	-	-	-	-	-	-	-	2	2	-	-	-	4	1.24
C14	Pharynx Unspecified	-	-	-	-	-	-	-	-	-	-	-	-	-	-	-	-	-	-	-
C15	Oesophagus	-	-	-	-	-	-	2	-	3	2	2	2	1	5	4	-	12	33	10.22
C16	Stomach	-	-	-	-	1	-	1	-	2	1	3	1	-	3	1	-	1	14	4.33
C17	Small Intestine	-	-	-	-	-	-	-	-	-	-	-	-	-	-	-	-	-	-	-
C18	Colon	-	-	-	-	-	-	-	-	-	-	-	-	2	-	-	-	-	2	0.62
C19-20	Rectum	-	-	-	-	-	-	-	-	-	-	-	1	-	1	-	-	-	2	0.62
C21	Anus & Anal Canal	-	-	-	-	-	-	-	-	-	1	-	-	-	-	-	-	-	1	0.31
C22	Liver	-	-	-	-	1	-	-	-	-	3	1	3	-	-	1	-	4	13	4.02
C23-24	Gallbladder etc.	-	-	-	-	-	-	-	-	1	2	-	-	2	2	-	-	1	8	2.48
C25	Pancreas	-	-	-	-	-	-	-	-	1	-	-	-	-	-	-	-	-	1	0.31
C30-31	Nose, Sinuses etc.	-	-	-	-	-	-	-	-	-	2	-	-	-	-	-	-	-	2	0.62
C32	Larynx	-	-	-	-	-	-	-	-	1	2	1	1	-	5	-	-	3	13	4.02
C33-34	Lung etc.	-	-	-	-	-	-	-	-	-	2	2	-	5	4	2	2	-	17	5.26
C37-38	Other Thoracic Organs	-	-	-	-	-	-	-	-	-	-	-	-	-	-	-	-	-	-	-
C40-41	Bone	1	-	1	-	-	-	-	-	1	-	-	-	-	1	1	-	-	5	1.55
C43	Melanoma of Skin	-	-	-	-	-	-	-	-	-	-	-	-	-	1	-	-	-	1	0.31
C44	Other Skin	-	-	-	-	-	-	-	-	1	1	-	1	1	-	-	5	-	9	2.79
C45	Mesothelioma	-	-	-	-	-	-	-	-	-	-	-	-	-	-	-	-	-	-	-
C46	Kaposi Sarcoma	-	-	-	-	-	-	-	-	-	-	-	-	-	-	-	-	-	-	-
C47+C49	Conn. & Soft Tissue	-	1	-	-	-	1	-	-	-	-	-	1	-	-	-	-	-	3	0.93
C50	Breast	-	-	-	-	-	-	1	5	8	8	9	1	7	4	-	2	1	46	14.24
C51	Vulva	-	-	-	-	-	-	-	-	-	-	-	-	-	-	-	-	-	-	-
C52	Vagina	-	-	-	-	-	-	-	-	-	-	-	-	-	-	1	-	-	1	0.31
C53	Cervix Uteri	-	-	-	-	1	3	3	2	8	5	4	3	3	2	1	-	4	39	12.07
C54	Corpus Uteri	-	-	-	-	-	-	-	-	-	3	-	-	2	1	-	-	1	7	2.17
C55	Uterus Unspecified	-	-	-	-	-	-	-	-	1	-	-	-	-	1	-	-	-	2	0.62
C56	Ovary etc.	-	-	-	-	-	-	-	-	1	1	-	2	-	-	-	2	1	7	2.17
C57	Other Female Genital	-	-	-	-	-	-	-	-	-	-	-	-	-	-	-	-	-	-	-
C58	Placenta	-	-	-	-	-	-	-	-	-	-	-	-	-	-	-	-	-	-	-
C64	Kidney etc.	-	-	-	-	-	-	-	1	-	-	-	-	-	-	-	-	-	1	0.31
C65	Renal Pelvis	-	-	-	-	-	-	-	-	-	-	-	-	-	-	-	-	-	-	-
C66	Ureter	-	-	-	-	-	-	-	-	-	-	-	-	-	-	-	-	-	-	-
C67	Bladder	-	-	-	-	-	-	1	-	-	-	2	-	2	-	-	-	-	5	1.55
C68	Uns. Urinary Organs	-	-	-	-	-	-	-	-	-	-	-	-	-	-	-	-	-	-	-
C69	Eye	-	1	-	-	-	-	-	-	-	-	-	1	-	-	-	-	-	2	0.62
C70-72	Brain, Nervous System	-	-	1	-	-	-	-	-	1	1	1	-	-	-	-	-	-	4	1.24
C73	Thyroid	-	-	-	-	-	1	-	-	1	-	-	1	-	-	1	-	-	4	1.24
C74	Adrenal Gland	-	-	-	1	-	-	-	-	-	-	-	-	-	-	-	-	-	1	0.31
C77	Sec Lymph Nodes	-	-	-	-	-	-	-	-	-	-	-	-	-	-	-	-	-	-	-
C78	Sec Resp & Digestive	-	-	-	-	-	-	-	-	-	-	-	-	-	-	-	-	-	-	-
C79	Sec Others	-	-	-	-	-	-	-	-	-	-	-	-	-	-	-	-	-	-	-
C81	Hodgkins Disease	-	-	-	-	-	-	-	1	1	-	-	-	-	-	-	-	-	2	0.62
C82-85, C96	NHL	-	-	-	-	-	-	1	-	-	1	1	-	1	-	1	-	-	5	1.55
C90	Multiple Myeloma	-	-	-	-	-	-	-	-	-	1	1	-	-	-	-	1	-	3	0.93
C91	Lymphoid Leuk.	-	-	-	-	-	-	-	-	-	-	-	-	-	-	-	1	-	1	0.31
C92-94	Myeloid Leukaemia	1	-	-	-	-	1	-	1	1	-	1	2	1	-	1	-	-	9	2.79
C95	Leukaemia Uns	-	-	1	-	-	-	-	1	-	-	-	-	-	-	-	-	-	2	0.62
O&U	Other and Uns	-	-	-	-	-	1	-	1	1	1	6	1	3	6	5	2	2	29	8.98
	<b>All Sites</b>	<b>2</b>	<b>2</b>	<b>3</b>	<b>1</b>	<b>7</b>	<b>11</b>	<b>10</b>	<b>13</b>	<b>35</b>	<b>40</b>	<b>35</b>	<b>24</b>	<b>33</b>	<b>40</b>	<b>19</b>	<b>15</b>	<b>33</b>	<b>323</b>	<b>100.00</b>

**TABLE: SKM-4(a):**  
**Average Annual Age Specific, Crude (CR), Age Adjusted (AAR) (with Standard Error(SE)) and**  
**Truncated (35-64 yrs) (TR) Incidence Rate per 100,000 population: 2003-2004 - Males**  
**Sikkim State**

ICD-10	0-4	5-9	10-14	15-19	20-24	25-29	30-34	35-39	40-44	45-49	50-54	55-59	60-64	65-69	70-74	>75	CR	AAR	SE	TR
C00	-	-	-	-	-	-	-	-	-	-	-	-	-	-	-	-	-	-	-	-
C01-02	-	-	-	-	-	-	-	-	5.5	3.5	-	-	16.1	31.0	-	-	1.3	2.1	0.77	3.8
C03-06	-	-	-	-	-	-	-	-	5.5	7.0	-	6.5	8.0	-	-	-	1.0	1.3	0.56	4.3
C07-8	-	-	-	-	-	-	-	-	-	3.5	-	-	-	-	-	-	0.3	0.4	0.26	0.7
C09	-	-	-	-	-	-	-	-	-	-	4.7	-	-	-	-	-	0.2	0.2	0.24	0.8
C10	-	-	-	-	-	-	-	-	-	-	-	-	-	-	-	-	-	-	-	-
C11	-	-	-	1.4	-	1.8	2.1	-	5.5	14.0	14.2	13.0	16.1	20.6	-	-	3.0	4.1	0.99	9.8
C12-13	-	-	-	-	-	-	-	-	-	-	9.5	-	8.0	20.6	-	27.9	1.1	2.0	0.75	2.6
C14	-	-	-	-	-	-	-	-	-	-	-	6.5	-	-	-	-	0.3	0.3	0.26	0.8
C15	-	-	-	-	-	-	-	-	-	3.5	9.5	65.0	32.1	41.3	40.3	55.7	5.1	7.7	1.47	14.7
C16	-	-	-	-	3.1	-	2.1	-	13.8	7.0	28.4	45.5	96.3	92.9	107.6	27.9	9.1	14.2	1.98	26.9
C17	-	-	-	-	-	-	-	-	-	-	-	-	-	-	-	-	-	-	-	-
C18	-	-	-	-	-	-	-	-	-	-	-	6.5	-	-	13.4	-	0.3	0.5	0.37	0.8
C19-20	-	-	-	-	-	1.8	-	-	-	3.5	-	-	8.0	10.3	-	13.9	0.8	1.3	0.58	1.7
C21	-	-	-	-	-	-	-	-	-	-	-	-	8.0	-	-	-	0.3	0.3	0.32	1.0
C22	-	-	-	-	-	-	-	2.2	-	14.0	23.6	6.5	40.1	31.0	53.8	-	4.0	6.0	1.28	13.0
C23-24	-	-	-	-	-	-	-	-	-	-	-	-	-	10.3	13.4	-	0.3	0.6	0.41	-
C25	-	-	-	-	-	-	-	-	-	3.5	-	-	8.0	-	-	-	0.5	0.5	0.38	1.7
C30-31	-	-	-	-	-	-	-	-	-	-	-	-	8.0	-	-	-	0.2	0.3	0.32	1.0
C32	-	-	-	-	-	-	-	2.2	-	7.0	4.7	6.5	56.2	10.3	26.9	41.8	3.5	5.0	1.19	10.6
C33-34	-	-	-	-	-	-	-	-	-	7.0	9.5	13.0	24.1	20.6	67.2	41.8	3.4	5.2	1.20	7.7
C37-38	-	-	-	-	-	-	-	-	2.8	-	-	-	-	-	-	27.9	0.5	0.7	0.43	0.5
C40-41	-	-	-	-	-	1.8	-	-	-	3.5	-	6.5	-	-	-	13.9	0.6	0.9	0.46	1.5
C43	-	-	-	-	-	-	-	-	-	-	-	-	-	31.0	-	27.9	0.8	1.5	0.67	-
C44	-	-	-	-	1.5	-	-	-	-	-	-	-	-	-	-	-	0.2	0.1	0.12	-
C45	-	-	-	-	-	-	-	-	-	-	-	-	-	-	-	-	-	-	-	-
C46	-	-	-	-	-	-	-	-	-	-	-	-	-	-	-	-	-	-	-	-
C47+C49	-	-	-	1.4	-	1.8	-	4.4	-	3.5	-	-	-	-	-	-	0.8	0.7	0.34	1.5
C50	-	-	-	-	-	-	-	-	-	3.5	-	6.5	-	-	-	-	0.3	0.5	0.33	1.5
C60	-	-	-	-	-	-	-	-	-	-	-	-	8.0	10.3	13.4	-	0.5	0.9	0.52	1.0
C61	-	-	-	-	-	-	-	-	-	-	-	-	-	10.3	26.9	-	0.5	0.8	0.49	-
C62	-	-	-	-	-	-	2.1	-	-	3.5	-	-	-	-	-	-	0.3	0.3	0.24	0.7
C63	-	-	-	-	-	-	-	-	-	-	-	-	-	-	-	-	-	-	-	-
C64	1.9	-	-	-	-	-	-	-	-	-	-	-	-	-	-	13.9	0.5	0.5	0.36	-
C65	-	-	-	-	-	-	-	-	-	-	-	-	-	-	-	-	-	-	-	-
C66	-	-	-	-	-	-	-	-	-	-	-	-	-	-	-	-	-	-	-	-
C67	-	-	-	-	-	-	-	-	-	3.5	4.7	-	-	20.6	-	13.9	0.8	1.3	0.61	1.4
C68	-	-	-	-	-	-	-	-	-	-	-	-	-	-	-	-	-	-	-	-
C69	-	-	-	-	-	-	-	-	-	-	-	-	-	-	-	-	-	-	-	-
C70-72	-	-	-	-	-	-	-	2.2	-	3.5	4.7	6.5	8.0	-	-	-	1.1	1.2	0.54	3.7
C73	-	-	-	-	-	-	-	-	-	-	4.7	-	-	-	13.4	27.9	0.6	1.1	0.53	0.8
C74	-	-	-	-	-	-	-	-	-	-	-	-	-	-	-	-	-	-	-	-
C77	-	-	-	-	-	-	-	-	-	-	4.7	-	-	10.3	-	-	0.5	0.5	0.39	0.8
C78	-	-	-	-	-	-	-	-	-	-	-	-	-	-	-	-	-	-	-	-
C79	-	-	-	-	-	-	-	-	-	-	-	-	-	-	-	-	-	-	-	-
C81	-	-	-	-	-	-	-	-	-	-	-	-	-	-	-	-	-	-	-	-
C82-85, C96	-	-	-	-	-	-	-	-	-	3.5	-	-	-	-	-	-	0.3	0.2	0.21	0.7
C90	-	-	-	-	-	-	-	-	-	-	-	-	-	10.3	-	-	0.2	0.3	0.31	-
C91	-	-	-	-	1.5	-	-	-	-	-	-	-	-	-	-	-	0.2	0.1	0.12	-
C92-94	-	2.9	-	-	-	-	2.1	-	2.8	-	4.7	-	-	-	-	-	0.8	0.8	0.38	1.3
C95	-	-	-	-	-	-	-	-	2.8	-	-	-	-	-	-	-	0.3	0.2	0.17	0.5
O&U	-	-	-	-	-	-	2.1	-	8.3	10.5	23.6	19.5	64.2	20.6	40.3	83.6	5.7	8.9	1.55	18.2
<b>All</b>	<b>1.9</b>	<b>2.9</b>	<b>-</b>	<b>2.8</b>	<b>6.1</b>	<b>7.4</b>	<b>10.4</b>	<b>10.9</b>	<b>46.8</b>	<b>108.4</b>	<b>151.3</b>	<b>208.1</b>	<b>409.5</b>	<b>402.5</b>	<b>416.8</b>	<b>417.8</b>	<b>50.1</b>	<b>73.6</b>	<b>4.44</b>	<b>136.2</b>

**TABLE: SKM-4(b):**  
**Average Annual Age Specific, Crude (CR), Age Adjusted (AAR) (with Standard Error(SE)) and**  
**Truncated (35-64 yrs) (TR) Incidence Rate per 100,000 population: 2003-2004 - Females**  
**Sikkim State**

ICD-10	0-4	5-9	10-14	15-19	20-24	25-29	30-34	35-39	40-44	45-49	50-54	55-59	60-64	65-69	70-74	>75	CR	AAR	SE	TR
C00	-	-	-	-	-	-	-	-	-	-	-	-	-	-	-	-	-	-	-	-
C01-02	-	-	-	-	1.8	-	-	-	-	4.8	-	9.1	-	13.0	-	-	0.7	1.2	0.62	2.1
C03-06	-	-	-	-	-	-	-	-	3.7	-	-	-	-	-	-	-	0.4	0.2	0.22	0.7
C07-8	-	-	-	-	1.8	4.1	-	-	-	4.8	-	9.1	-	-	-	-	1.1	1.1	0.54	2.1
C09	-	-	-	-	-	-	-	-	-	-	6.3	-	9.8	13.0	-	-	0.5	1.1	0.64	2.3
C10	-	-	-	-	-	-	-	-	-	-	-	-	-	-	-	-	-	-	-	-
C11	-	-	-	-	3.6	4.1	2.6	2.8	3.7	4.8	-	9.1	-	-	-	-	1.8	1.8	0.64	3.4
C12-13	-	-	-	-	-	-	-	-	-	-	-	-	19.6	26.0	-	-	0.7	1.6	0.78	2.5
C14	-	-	-	-	-	-	-	-	-	-	-	-	-	-	-	-	-	-	-	-
C15	-	-	-	-	-	-	5.2	-	11.2	9.5	12.6	18.2	9.8	65.0	76.2	-	6.0	6.8	1.52	9.7
C16	-	-	-	-	1.8	-	2.6	-	7.5	4.8	19.0	9.1	-	39.0	19.0	-	2.6	3.9	1.12	6.6
C17	-	-	-	-	-	-	-	-	-	-	-	-	-	-	-	-	-	-	-	-
C18	-	-	-	-	-	-	-	-	-	-	-	-	19.6	-	-	-	0.4	0.8	0.55	2.5
C19-20	-	-	-	-	-	-	-	-	-	-	-	9.1	-	13.0	-	-	0.4	0.8	0.53	1.2
C21	-	-	-	-	-	-	-	-	-	4.8	-	-	-	-	-	-	0.2	0.3	0.29	0.9
C22	-	-	-	-	1.8	-	-	-	-	14.3	6.3	27.4	-	-	19.0	-	2.4	2.8	0.95	7.3
C23-24	-	-	-	-	-	-	-	-	3.7	9.5	-	-	19.6	26.0	-	-	1.5	2.4	0.91	5.1
C25	-	-	-	-	-	-	-	-	3.7	-	-	-	-	-	-	-	0.2	0.2	0.22	0.7
C30-31	-	-	-	-	-	-	-	-	-	9.5	-	-	-	-	-	-	0.4	0.6	0.40	1.8
C32	-	-	-	-	-	-	-	-	3.7	9.5	6.3	9.1	-	65.0	-	-	2.4	3.4	1.10	4.8
C33-34	-	-	-	-	-	-	-	-	-	9.5	12.6	-	48.9	52.0	38.1	37.0	3.1	6.2	1.52	10.2
C37-38	-	-	-	-	-	-	-	-	-	-	-	-	-	-	-	-	-	-	-	-
C40-41	2.0	-	1.3	-	-	-	-	-	3.7	-	-	-	-	13.0	19.0	-	0.9	1.3	0.64	0.7
C43	-	-	-	-	-	-	-	-	-	-	-	-	-	13.0	-	-	0.2	0.4	0.39	-
C44	-	-	-	-	-	-	-	-	3.7	4.8	-	9.1	9.8	-	-	92.5	1.6	3.1	1.05	4.1
C45	-	-	-	-	-	-	-	-	-	-	-	-	-	-	-	-	-	-	-	-
C46	-	-	-	-	-	-	-	-	-	-	-	-	-	-	-	-	-	-	-	-
C47+C49	-	1.5	-	-	-	2.0	-	-	-	-	-	9.1	-	-	-	-	0.5	0.7	0.43	1.2
C50	-	-	-	-	-	-	2.6	13.9	29.9	38.1	56.9	9.1	68.5	52.0	-	37.0	8.4	13.3	2.05	35.0
C51	-	-	-	-	-	-	-	-	-	-	-	-	-	-	-	-	-	-	-	-
C52	-	-	-	-	-	-	-	-	-	-	-	-	-	-	19.0	-	0.2	0.4	0.38	-
C53	-	-	-	-	1.8	6.1	7.8	5.5	29.9	23.8	25.3	27.4	29.4	26.0	19.0	-	7.1	9.4	1.66	22.9
C54	-	-	-	-	-	-	-	-	-	14.3	-	-	19.6	13.0	-	-	1.3	2.0	0.84	5.3
C55	-	-	-	-	-	-	-	-	3.7	-	-	-	-	13.0	-	-	0.4	0.6	0.45	0.7
C56	-	-	-	-	-	-	-	-	3.7	4.8	-	18.2	-	-	-	37.0	1.3	2.0	0.82	4.0
C57	-	-	-	-	-	-	-	-	-	-	-	-	-	-	-	-	-	-	-	-
C58	-	-	-	-	-	-	-	-	-	-	-	-	-	-	-	-	-	-	-	-
C64	-	-	-	-	-	-	-	2.8	-	-	-	-	-	-	-	-	0.2	0.2	0.17	0.5
C65	-	-	-	-	-	-	-	-	-	-	-	-	-	-	-	-	-	-	-	-
C66	-	-	-	-	-	-	-	-	-	-	-	-	-	-	-	-	-	-	-	-
C67	-	-	-	-	-	-	2.6	-	-	-	12.6	-	19.6	-	-	-	0.9	1.6	0.73	4.6
C68	-	-	-	-	-	-	-	-	-	-	-	-	-	-	-	-	-	-	-	-
C69	-	1.5	-	-	-	-	-	-	-	-	-	9.1	-	-	-	-	0.4	0.5	0.39	1.2
C70-72	-	-	1.3	-	-	-	-	-	3.7	4.8	6.3	-	-	-	-	-	0.7	0.9	0.50	2.7
C73	-	-	-	-	-	2.0	-	-	3.7	-	-	9.1	-	-	19.0	-	0.7	1.1	0.60	1.9
C74	-	-	-	1.5	-	-	-	-	-	-	-	-	-	-	-	-	0.2	0.1	0.13	-
C77	-	-	-	-	-	-	-	-	-	-	-	-	-	-	-	-	-	-	-	-
C78	-	-	-	-	-	-	-	-	-	-	-	-	-	-	-	-	-	-	-	-
C79	-	-	-	-	-	-	-	-	-	-	-	-	-	-	-	-	-	-	-	-
C81	-	-	-	-	-	-	-	2.8	3.7	-	-	-	-	-	-	-	0.4	0.4	0.28	1.3
C82-85,C96	-	-	-	-	-	-	2.6	-	-	4.8	6.3	-	9.8	-	19.0	-	0.9	1.5	0.71	3.2
C90	-	-	-	-	-	-	-	-	-	4.8	6.3	-	-	-	-	18.5	0.5	1.0	0.56	1.9
C91	-	-	-	-	-	-	-	-	-	-	-	-	-	-	-	18.5	0.2	0.4	0.37	-
C92-94	2.0	-	-	-	-	2.0	-	2.8	3.7	-	6.3	18.2	9.8	-	19.0	-	1.6	2.6	0.91	5.9
C95	-	-	1.3	-	-	-	-	2.8	-	-	-	-	-	-	-	-	0.4	0.3	0.20	0.5
O&U	-	-	-	-	-	2.0	-	2.8	3.7	4.8	37.9	9.1	29.4	78.0	95.2	37.0	5.3	9.3	1.81	13.3
<b>All</b>	<b>3.9</b>	<b>2.9</b>	<b>3.9</b>	<b>1.5</b>	<b>12.5</b>	<b>22.4</b>	<b>26.1</b>	<b>36.0</b>	<b>130.8</b>	<b>190.7</b>	<b>221.2</b>	<b>218.8</b>	<b>323.0</b>	<b>519.8</b>	<b>361.8</b>	<b>277.4</b>	<b>59.0</b>	<b>88.2</b>	<b>5.37</b>	<b>174.8</b>

**TABLE: SKM-5(a): Number (#) and Proportion (%) of Cancers by Site (ICD-10) and Method of Diagnosis: 2003-2004 - Males  
Sikkim State**

ICD-10	Site	Microscopic		X-Ray / imaging		Clinical		Others		D.C.O		Total	
		#	%	#	%	#	%	#	%	#	%	#	%
C00	Lip	-	-	-	-	-	-	-	-	-	-	-	-
C01-02	Tongue	7	87.5	-	-	-	-	-	-	1	12.5	8	100.0
C03-06	Mouth	5	83.3	-	-	1	16.7	-	-	-	-	6	100.0
C07-8	Salivary Gland	-	-	-	-	2	100.0	-	-	-	-	2	100.0
C09	Tonsil	1	100.0	-	-	-	-	-	-	-	-	1	100.0
C10	Oth. Oropharynx	-	-	-	-	-	-	-	-	-	-	-	-
C11	Nasopharynx	15	78.9	1	5.3	1	5.3	2	10.5	-	-	19	100.0
C12-13	Hypopharynx	7	100.0	-	-	-	-	-	-	-	-	7	100.0
C14	Pharynx Unspecified	1	50.0	-	-	-	-	1	50.0	-	-	2	100.0
C15	Oesophagus	9	28.1	2	6.3	-	-	20	62.5	1	3.1	32	100.0
C16	Stomach	25	43.9	1	1.8	2	3.5	25	43.9	4	7.0	57	100.0
C17	Small Intestine	-	-	-	-	-	-	-	-	-	-	-	-
C18	Colon	2	100.0	-	-	-	-	-	-	-	-	2	100.0
C19-20	Rectum	3	60.0	-	-	1	20.0	-	-	1	20.0	5	100.0
C21	Anus & Anal Canal	1	50.0	-	-	1	50.0	-	-	-	-	2	100.0
C22	Liver	9	36.0	12	48.0	-	-	3	12.0	1	4.0	25	100.0
C23-24	Gallbladder etc.	1	50.0	1	50.0	-	-	-	-	-	-	2	100.0
C25	Pancreas	-	-	2	66.7	-	-	-	-	1	33.3	3	100.0
C30-31	Nose, Sinuses etc.	1	100.0	-	-	-	-	-	-	-	-	1	100.0
C32	Larynx	11	50.0	-	-	7	31.8	4	18.2	-	-	22	100.0
C33-34	Lung etc.	13	61.9	6	28.6	1	4.8	-	-	1	4.8	21	100.0
C37-38	Other Thoracic Organs	2	66.7	-	-	-	-	-	-	1	33.3	3	100.0
C40-41	Bone	2	50.0	2	50.0	-	-	-	-	-	-	4	100.0
C43	Melanoma of Skin	5	100.0	-	-	-	-	-	-	-	-	5	100.0
C44	Other Skin	1	100.0	-	-	-	-	-	-	-	-	1	100.0
C45	Mesothelioma	-	-	-	-	-	-	-	-	-	-	-	-
C46	Kaposi Sarcoma	-	-	-	-	-	-	-	-	-	-	-	-
C47+C49	Conn. & Soft Tissue	3	60.0	1	20.0	1	20.0	-	-	-	-	5	100.0
C50	Breast	2	100.0	-	-	-	-	-	-	-	-	2	100.0
C60	Penis	3	100.0	-	-	-	-	-	-	-	-	3	100.0
C61	Prostate	1	33.3	1	33.3	-	-	1	33.3	-	-	3	100.0
C62	Testis	2	100.0	-	-	-	-	-	-	-	-	2	100.0
C63	Other Male Genital	-	-	-	-	-	-	-	-	-	-	-	-
C64	Kidney etc.	1	33.3	2	66.7	-	-	-	-	-	-	3	100.0
C65	Renal Pelvis	-	-	-	-	-	-	-	-	-	-	-	-
C66	Ureter	-	-	-	-	-	-	-	-	-	-	-	-
C67	Bladder	3	60.0	2	40.0	-	-	-	-	-	-	5	100.0
C68	Uns. Urinary Organs	-	-	-	-	-	-	-	-	-	-	-	-
C69	Eye	-	-	-	-	-	-	-	-	-	-	-	-
C70-72	Brain, Nervous System	-	-	7	100.0	-	-	-	-	-	-	7	100.0
C73	Thyroid	4	100.0	-	-	-	-	-	-	-	-	4	100.0
C74	Adrenal Gland	-	-	-	-	-	-	-	-	-	-	-	-
C77	Sec Lymph Nodes	1	33.3	1	33.3	-	-	1	33.3	-	-	3	100.0
C78	Sec Resp & Digestive	-	-	-	-	-	-	-	-	-	-	-	-
C79	Sec Others	-	-	-	-	-	-	-	-	-	-	-	-
C81	Hodgkins Disease	-	-	-	-	-	-	-	-	-	-	-	-
C82-85,C96	NHL	2	100.0	-	-	-	-	-	-	-	-	2	100.0
C90	Multiple Myeloma	-	-	1	100.0	-	-	-	-	-	-	1	100.0
C91	Lymphoid Leuk.	1	100.0	-	-	-	-	-	-	-	-	1	100.0
C92-94	Myeloid Leukaemia	5	100.0	-	-	-	-	-	-	-	-	5	100.0
C95	Leukaemia Uns	1	50.0	-	-	-	-	-	-	1	50.0	2	100.0
O&U	Other and Uns	19	52.8	6	16.7	3	8.3	1	2.8	7	19.4	36	100.0
	<b>All Sites</b>	<b>169</b>	<b>53.8</b>	<b>48</b>	<b>15.3</b>	<b>20</b>	<b>6.4</b>	<b>58</b>	<b>18.5</b>	<b>19</b>	<b>6.1</b>	<b>314</b>	<b>100.0</b>

**TABLE: SKM-5(b): Number (#) and Proportion (%) of Cancers by Site (ICD-10) and Method of Diagnosis : 2003-2004 - Females  
Sikkim State**

ICD-10	Site	Microscopic		X-Ray / imaging		Clinical		Others		D.C.O		Total	
		#	%	#	%	#	%	#	%	#	%	#	%
C00	Lip	-	-	-	-	-	-	-	-	-	-	-	-
C01-02	Tongue	3	75.0	-	-	1	25.0	-	-	-	-	4	100.0
C03-06	Mouth	-	-	-	-	2	100.0	-	-	-	-	2	100.0
C07-8	Salivary Gland	5	83.3	-	-	1	16.7	-	-	-	-	6	100.0
C09	Tonsil	3	100.0	-	-	-	-	-	-	-	-	3	100.0
C10	Oth. Oropharynx	-	-	-	-	-	-	-	-	-	-	-	-
C11	Nasopharynx	9	90.0	-	-	1	10.0	-	-	-	-	10	100.0
C12-13	Hypopharynx	3	75.0	-	-	-	-	1	25.0	-	-	4	100.0
C14	Pharynx Unspecified	-	-	-	-	-	-	-	-	-	-	-	-
C15	Oesophagus	7	21.2	3	9.1	-	-	23	69.7	-	-	33	100.0
C16	Stomach	5	35.7	4	28.6	-	-	5	35.7	-	-	14	100.0
C17	Small Intestine	-	-	-	-	-	-	-	-	-	-	-	-
C18	Colon	2	100.0	-	-	-	-	-	-	-	-	2	100.0
C19-20	Rectum	-	-	1	50.0	1	50.0	-	-	-	-	2	100.0
C21	Anus & Anal Canal	-	-	-	-	1	100.0	-	-	-	-	1	100.0
C22	Liver	-	-	11	84.6	-	-	-	-	2	15.4	13	100.0
C23-24	Gallbladder etc.	3	37.5	5	62.5	-	-	-	-	-	-	8	100.0
C25	Pancreas	-	-	1	100.0	-	-	-	-	-	-	1	100.0
C30-31	Nose, Sinuses etc.	2	100.0	-	-	-	-	-	-	-	-	2	100.0
C32	Larynx	6	46.2	1	7.7	4	30.8	1	7.7	1	7.7	13	100.0
C33-34	Lung etc.	8	47.1	7	41.2	-	-	-	-	2	11.8	17	100.0
C37-38	Other Thoracic Organs	-	-	-	-	-	-	-	-	-	-	-	-
C40-41	Bone	3	60.0	1	20.0	-	-	-	-	1	20.0	5	100.0
C43	Melanoma of Skin	1	100.0	-	-	-	-	-	-	-	-	1	100.0
C44	Other Skin	7	77.8	-	-	2	22.2	-	-	-	-	9	100.0
C45	Mesothelioma	-	-	-	-	-	-	-	-	-	-	-	-
C46	Kaposi Sarcoma	-	-	-	-	-	-	-	-	-	-	-	-
C47+C49	Conn. & Soft Tissue	2	66.7	-	-	1	33.3	-	-	-	-	3	100.0
C50	Breast	42	91.3	-	-	2	4.3	-	-	2	4.3	46	100.0
C51	Vulva	-	-	-	-	-	-	-	-	-	-	-	-
C52	Vagina	1	100.0	-	-	-	-	-	-	-	-	1	100.0
C53	Cervix Uteri	31	79.5	-	-	6	15.4	1	2.6	1	2.6	39	100.0
C54	Corpus Uteri	7	100.0	-	-	-	-	-	-	-	-	7	100.0
C55	Uterus Unspecified	1	50.0	-	-	-	-	-	-	1	50.0	2	100.0
C56	Ovary etc.	4	57.1	2	28.6	-	-	1	14.3	-	-	7	100.
C57	Other Female Genital	-	-	-	-	-	-	-	-	-	-	-	-
C58	Placenta	-	-	-	-	-	-	-	-	-	-	-	-
C64	Kidney etc.	-	-	1	100.0	-	-	-	-	-	-	1	100.0
C65	Renal Pelvis	-	-	-	-	-	-	-	-	-	-	-	-
C66	Ureter	-	-	-	-	-	-	-	-	-	-	-	-
C67	Bladder	2	40.0	1	20.0	-	-	2	40.0	-	-	5	100.0
C68	Uns. Urinary Organs	-	-	-	-	-	-	-	-	-	-	-	-
C69	Eye	1	50.0	1	50.0	-	-	-	-	-	-	2	100.0
C70-72	Brain, Nervous System	-	-	2	50.0	-	-	2	50.0	-	-	4	100.0
C73	Thyroid	4	100.0	-	-	-	-	-	-	-	-	4	100.0
C74	Adrenal Gland	-	-	1	100.0	-	-	-	-	-	-	1	100.0
C77	Sec Lymph Nodes	-	-	-	-	-	-	-	-	-	-	-	-
C78	Sec Resp & Digestive	-	-	-	-	-	-	-	-	-	-	-	-
C79	Sec Others	-	-	-	-	-	-	-	-	-	-	-	-
C81	Hodgkins Disease	2	100.0	-	-	-	-	-	-	-	-	2	100.0
C82-85,C96	NHL	5	100.0	-	-	-	-	-	-	-	-	5	100.0
C90	Multiple Myeloma	-	-	2	66.7	-	-	1	33.3	-	-	3	100.0
C91	Lymphoid Leuk.	1	100.0	-	-	-	-	-	-	-	-	1	100.0
C92-94	Myeloid Leukaemia	6	66.7	-	-	-	-	1	11.1	2	22.2	9	100.0
C95	Leukaemia Uns	2	100.0	-	-	-	-	-	-	-	-	2	100.0
O&U	Other and Uns	12	41.4	7	24.1	1	3.4	1	3.4	8	27.6	29	100.0
	<b>All Sites</b>	<b>190</b>	<b>58.8</b>	<b>51</b>	<b>15.8</b>	<b>23</b>	<b>7.1</b>	<b>39</b>	<b>12.1</b>	<b>20</b>	<b>6.2</b>	<b>323</b>	<b>100.0</b>

**TABLE: SKM-6(a): Number (#) and Proportion (%) of Cancers by Site (ICD-9) and Detailed Microscopic Diagnosis, 2003-2004 - Males : Sikkim State**

ICD-10	Site	Pri. Hist		Sec. Hist		Cytology		Blood Film		Bone Marrow		Others		Total	
		#	%	#	%	#	%	#	%	#	%	#	%	#	%
C00	Lip	-	-	-	-	-	-	-	-	-	-	-	-	-	-
C01-02	Tongue	5	62.5	-	-	2	25.0	-	-	-	-	1	12.5	8	100.0
C03-06	Mouth	3	50.0	1	16.7	1	16.7	-	-	-	-	1	16.7	6	100.0
C07-8	Salivary Gland	-	-	-	-	-	-	-	-	-	-	2	100.0	2	100.0
C09	Tonsil	1	100.0	-	-	-	-	-	-	-	-	-	-	1	100.0
C10	Oth. Oropharynx	-	-	-	-	-	-	-	-	-	-	-	-	-	-
C11	Nasopharynx	9	47.4	-	-	6	31.6	-	-	-	-	4	21.1	19	100.0
C12-13	Hypopharynx	3	42.9	-	-	4	57.1	-	-	-	-	-	-	7	100.0
C14	Pharynx Unspecified	-	-	-	-	1	50.0	-	-	-	-	1	50.0	2	100.0
C15	Oesophagus	4	12.5	-	-	5	15.6	-	-	-	-	23	71.9	32	100.0
C16	Stomach	21	36.8	-	-	4	7.0	-	-	-	-	32	56.1	57	100.0
C17	Small Intestine	-	-	-	-	-	-	-	-	-	-	-	-	-	-
C18	Colon	1	50.0	-	-	1	50.0	-	-	-	-	-	-	2	100.0
C19-20	Rectum	3	60.0	-	-	-	-	-	-	-	-	2	40.0	5	100.0
C21	Anus & Anal Canal	1	50.0	-	-	-	-	-	-	-	-	1	50.0	2	100.0
C22	Liver	2	8.0	-	-	7	28.0	-	-	-	-	16	64.0	25	100.0
C23-24	Gallbladder etc.	-	-	-	-	1	50.0	-	-	-	-	1	50.0	2	100.0
C25	Pancreas	-	-	-	-	-	-	-	-	-	-	3	100.0	3	100.0
C30-31	Nose, Sinuses etc.	1	100.0	-	-	-	-	-	-	-	-	-	-	1	100.0
C32	Larynx	4	18.2	-	-	7	31.8	-	-	-	-	11	50.0	22	100.0
C33-34	Lung etc.	2	9.5	-	-	11	52.4	-	-	-	-	8	38.1	21	100.0
C37-38	Other Thoracic Organs	2	66.7	-	-	-	-	-	-	-	-	1	33.3	3	100.0
C40-41	Bone	2	50.0	-	-	-	-	-	-	-	-	2	50.0	4	100.0
C43	Melanoma of Skin	5	100.0	-	-	-	-	-	-	-	-	-	-	5	100.0
C44	Other Skin	-	-	-	-	1	100.0	-	-	-	-	-	-	1	100.0
C45	Mesothelioma	-	-	-	-	-	-	-	-	-	-	-	-	-	-
C46	Kaposi Sarcoma	-	-	-	-	-	-	-	-	-	-	-	-	-	-
C47+C49	Conn. & Soft Tissue	3	60.0	-	-	-	-	-	-	-	-	2	40.0	5	100.0
C50	Breast	-	-	-	-	2	100.0	-	-	-	-	-	-	2	100.0
C60	Penis	1	33.3	-	-	2	66.7	-	-	-	-	-	-	3	100.0
C61	Prostate	1	33.3	-	-	-	-	-	-	-	-	2	66.7	3	100.0
C62	Testis	2	100.0	-	-	-	-	-	-	-	-	-	-	2	100.0
C63	Other Male Genital	-	-	-	-	-	-	-	-	-	-	-	-	-	-
C64	Kidney etc.	-	-	-	-	1	33.3	-	-	-	-	2	66.7	3	100.0
C65	Renal Pelvis	-	-	-	-	-	-	-	-	-	-	-	-	-	-
C66	Ureter	-	-	-	-	-	-	-	-	-	-	-	-	-	-
C67	Bladder	3	60.0	-	-	-	-	-	-	-	-	2	40.0	5	100.0
C68	Uns. Urinary Organs	-	-	-	-	-	-	-	-	-	-	-	-	-	-
C69	Eye	-	-	-	-	-	-	-	-	-	-	-	-	-	-
C70-72	Brain, Nervous System	-	-	-	-	-	-	-	-	-	-	7	100.0	7	100.0
C73	Thyroid	-	-	-	-	4	100.0	-	-	-	-	-	-	4	100.0
C74	Adrenal Gland	-	-	-	-	-	-	-	-	-	-	-	-	-	-
C77	Sec Lymph Nodes	-	-	-	-	1	33.3	-	-	-	-	2	66.7	3	100.0
C78	Sec Resp & Digestive	-	-	-	-	-	-	-	-	-	-	-	-	-	-
C79	Sec Others	-	-	-	-	-	-	-	-	-	-	-	-	-	-
C81	Hodgkins Disease	-	-	-	-	-	-	-	-	-	-	-	-	-	-
C82-85,C96	NHL	1	50.0	-	-	-	-	1	50.0	-	-	-	-	2	100.0
C90	Multiple Myeloma	-	-	-	-	-	-	-	-	-	-	1	100.0	1	100.0
C91	Lymphoid Leuk.	-	-	-	-	-	-	1	100.0	-	-	-	-	1	100.0
C92-94	Myeloid Leukaemia	-	-	-	-	-	-	4	80.0	1	20.0	-	-	5	100.0
C95	Leukaemia Uns	-	-	-	-	-	-	1	50.0	-	-	1	50.0	2	100.0
O&U	Other and Uns	1	2.8	2	5.6	16	44.4	-	-	-	-	17	47.2	36	100.0
	<b>All Sites</b>	<b>81</b>	<b>25.8</b>	<b>3</b>	<b>1.0</b>	<b>77</b>	<b>24.5</b>	<b>7</b>	<b>2.2</b>	<b>1</b>	<b>0.3</b>	<b>145</b>	<b>46.2</b>	<b>314</b>	<b>100.0</b>

**TABLE: SKM-6(b): Number (#) and Proportion (%) of Cancers by Site (ICD-9) and Detailed Microscopic Diagnosis, 2003-2004 - Females : Sikkim State**

ICD-10	Site	Pri. Hist		Sec. Hist		Cytology		Blood Film		Bone Marrow		Others		Total	
		#	%	#	%	#	%	#	%	#	%	#	%	#	%
C00	Lip	-	-	-	-	-	-	-	-	-	-	-	-	-	-
C01-02	Tongue	3	75.0	-	-	-	-	-	-	-	-	1	25.0	4	100.0
C03-06	Mouth	-	-	-	-	-	-	-	-	-	-	2	100.0	2	100.0
C07-8	Salivary Gland	2	33.3	-	-	3	50.0	-	-	-	-	1	16.7	6	100.0
C09	Tonsil	3	100.0	-	-	-	-	-	-	-	-	-	-	3	100.0
C10	Oth. Oropharynx	-	-	-	-	-	-	-	-	-	-	-	-	-	-
C11	Nasopharynx	3	30.0	-	-	6	60.0	-	-	-	-	1	10.0	10	100.0
C12-13	Hypopharynx	-	-	-	-	3	75.0	-	-	-	-	1	25.0	4	100.0
C14	Pharynx Unspecified	-	-	-	-	-	-	-	-	-	-	-	-	-	-
C15	Oesophagus	5	15.2	-	-	2	6.1	-	-	-	-	26	78.8	33	100.0
C16	Stomach	4	28.6	-	-	1	7.1	-	-	-	-	9	64.3	14	100.0
C17	Small Intestine	-	-	-	-	-	-	-	-	-	-	-	-	-	-
C18	Colon	2	100.0	-	-	-	-	-	-	-	-	-	-	2	100.0
C19-20	Rectum	-	-	-	-	-	-	-	-	-	-	2	100.0	2	100.0
C21	Anus & Anal Canal	-	-	-	-	-	-	-	-	-	-	1	100.0	1	100.0
C22	Liver	-	-	-	-	-	-	-	-	-	-	13	100.0	13	100.0
C23-24	Gallbladder etc.	3	37.5	-	-	-	-	-	-	-	-	5	62.5	8	100.0
C25	Pancreas	-	-	-	-	-	-	-	-	-	-	1	100.0	1	100.0
C30-31	Nose, Sinuses etc.	2	100.0	-	-	-	-	-	-	-	-	-	-	2	100.0
C32	Larynx	4	30.8	-	-	2	15.4	-	-	-	-	7	53.8	13	100.0
C33-34	Lung etc.	-	-	-	-	8	47.1	-	-	-	-	9	52.9	17	100.0
C37-38	Other Thoracic Organs	-	-	-	-	-	-	-	-	-	-	-	-	-	-
C40-41	Bone	1	20.0	-	-	2	40.0	-	-	-	-	2	40.0	5	100.0
C43	Melanoma of Skin	-	-	-	-	1	100.0	-	-	-	-	-	-	1	100.0
C44	Other Skin	7	77.8	-	-	-	-	-	-	-	-	2	22.2	9	100.0
C45	Mesothelioma	-	-	-	-	-	-	-	-	-	-	-	-	-	-
C46	Kaposi Sarcoma	-	-	-	-	-	-	-	-	-	-	-	-	-	-
C47+C49	Conn. & Soft Tissue	2	66.7	-	-	-	-	-	-	-	-	1	33.3	3	100.0
C50	Breast	7	15.2	-	-	35	76.1	-	-	-	-	4	8.7	46	100.0
C51	Vulva	-	-	-	-	-	-	-	-	-	-	-	-	-	-
C52	Vagina	1	100.0	-	-	-	-	-	-	-	-	-	-	1	100.0
C53	Cervix Uteri	30	76.9	-	-	1	2.6	-	-	-	-	8	20.5	39	100.0
C54	Corpus Uteri	6	85.7	-	-	1	14.3	-	-	-	-	-	-	7	100.0
C55	Uterus Unspecified	-	-	1	50.0	-	-	-	-	-	-	1	50.0	2	100.0
C56	Ovary etc.	2	28.6	-	-	2	28.6	-	-	-	-	3	42.9	7	100.0
C57	Other Female Genital	-	-	-	-	-	-	-	-	-	-	-	-	-	-
C58	Placenta	-	-	-	-	-	-	-	-	-	-	-	-	-	-
C64	Kidney etc.	-	-	-	-	-	-	-	-	-	-	1	100.0	1	100.0
C65	Renal Pelvis	-	-	-	-	-	-	-	-	-	-	-	-	-	-
C66	Ureter	-	-	-	-	-	-	-	-	-	-	-	-	-	-
C67	Bladder	2	40.0	-	-	-	-	-	-	-	-	3	60.0	5	100.0
C68	Uns.Urinary Organs	-	-	-	-	-	-	-	-	-	-	-	-	-	-
C69	Eye	-	-	-	-	1	50.0	-	-	-	-	1	50.0	2	100.0
C70-72	Brain, Nervous System	-	-	-	-	-	-	-	-	-	-	4	100.0	4	100.0
C73	Thyroid	-	-	-	-	4	100.0	-	-	-	-	-	-	4	100.0
C74	Adrenal Gland	-	-	-	-	-	-	-	-	-	-	1	100.0	1	100.0
C77	Sec Lymph Nodes	-	-	-	-	-	-	-	-	-	-	-	-	-	-
C78	Sec Resp & Digestive	-	-	-	-	-	-	-	-	-	-	-	-	-	-
C79	Sec Others	-	-	-	-	-	-	-	-	-	-	-	-	-	-
C81	Hodgkins Disease	-	-	-	-	2	100.0	-	-	-	-	-	-	2	100.0
C82-85,C96	NHL	-	-	-	-	2	40.0	3	60.0	-	-	-	-	5	100.0
C90	Multiple Myeloma	-	-	-	-	-	-	-	-	-	-	3	100.0	3	100.0
C91	Lymphoid Leuk.	-	-	-	-	-	-	1	100.0	-	-	-	-	1	100.0
C92-94	Myeloid Leukaemia	1	11.1	-	-	-	-	5	55.6	-	-	3	33.3	9	100.0
C95	Leukaemia Uns	-	-	-	-	-	-	1	50.0	1	50.0	-	-	2	100.0
O&U	Other and Uns	1	3.4	-	-	11	37.9	-	-	-	-	17	58.6	29	100.0
	<b>All Sites</b>	<b>91</b>	<b>28.2</b>	<b>1</b>	<b>0.3</b>	<b>87</b>	<b>26.9</b>	<b>10</b>	<b>3.1</b>	<b>1</b>	<b>0.3</b>	<b>133</b>	<b>41.2</b>	<b>323</b>	<b>100.0</b>

**TABLE SKM-7 (a): Number of Cancer Deaths by Five Year Age Group and Site (ICD-10):  
2003-2004 – Males**

*% = Relative Proportion of Cancers of All Sites.*

**Sikkim State**

ICD-10	Site	0-4	5-9	10-14	15-19	20-24	25-29	30-34	35-39	40-44	45-49	50-54	55-59	60-64	65-69	70-74	75+	Unkn	Total	%
C00	Lip	-	-	-	-	-	-	-	-	-	-	-	-	-	-	-	-	-	-	-
C01-02	Tongue	-	-	-	-	-	-	-	-	-	1	-	-	1	-	-	-	-	2	1.37
C03-06	Mouth	-	-	-	-	-	-	-	-	1	-	-	-	-	-	-	-	-	1	0.68
C07-8	Salivary Gland	-	-	-	-	-	-	-	-	-	-	-	-	-	-	-	-	-	-	-
C09	Tonsil	-	-	-	-	-	-	-	-	-	-	-	-	-	-	-	-	-	-	-
C10	Oth. Oropharynx	-	-	-	-	-	-	-	-	-	-	-	-	-	-	-	-	-	-	-
C11	Nasopharynx	-	-	-	-	-	-	-	-	-	-	3	2	2	-	-	-	-	7	4.79
C12-13	Hypopharynx	-	-	-	-	-	-	-	-	-	-	1	-	1	-	-	1	-	3	2.05
C14	Pharynx Unspecified	-	-	-	-	-	-	-	-	-	-	-	-	-	-	-	-	-	-	-
C15	Oesophagus	-	-	-	-	-	-	1	-	-	1	2	3	4	1	1	2	1	16	10.96
C16	Stomach	-	-	-	-	1	-	-	-	2	-	3	1	2	4	2	1	-	16	10.96
C17	Small Intestine	-	-	-	-	-	-	-	-	-	-	-	-	-	-	-	-	-	-	-
C18	Colon	-	-	-	-	-	-	-	-	-	-	-	-	-	-	-	-	-	-	-
C19-20	Rectum	-	-	-	-	-	1	-	-	-	-	-	-	-	-	-	-	-	1	0.68
C21	Anus & Anal Canal	-	-	-	-	-	-	-	-	-	-	-	-	1	-	-	-	-	1	0.68
C22	Liver	-	-	-	-	-	-	-	-	1	2	1	1	2	2	-	-	-	9	6.16
C23-24	Gallbladder etc.	-	-	-	-	-	-	-	-	-	-	-	-	-	-	-	-	-	-	-
C25	Pancreas	-	-	-	-	-	-	-	-	-	-	-	-	-	-	-	-	-	-	-
C30-31	Nose, Sinuses etc.	-	-	-	-	-	-	-	-	-	-	-	-	-	-	-	-	-	-	-
C32	Larynx	-	-	-	-	-	-	-	-	-	1	-	1	3	-	-	1	1	7	4.79
C33-34	Lung etc.	-	-	-	-	-	-	-	-	-	1	-	1	-	-	1	-	-	3	2.05
C37-38	Other Thoracic Organs	-	-	-	-	-	-	-	-	1	-	-	-	-	-	-	-	-	1	0.68
C40-41	Bone	-	-	-	-	-	-	-	-	-	-	-	-	-	-	1	-	-	1	0.68
C43	Melanoma of Skin	-	-	-	-	-	-	-	-	-	-	-	-	-	-	-	-	-	-	-
C44	Other Skin	-	-	-	-	1	-	-	-	-	-	-	-	-	-	-	-	-	1	0.68
C45	Mesothelioma	-	-	-	-	-	-	-	-	-	-	-	-	-	-	-	-	-	-	-
C46	Kaposi Sarcoma	-	-	-	-	-	-	-	-	-	-	-	-	-	-	-	-	-	-	-
C47 + C49	Conn. & Soft Tissue	-	-	-	-	-	-	-	-	-	-	-	-	-	-	-	-	-	-	-
C50	Breast	-	-	-	-	-	-	-	-	-	-	-	-	-	-	-	-	-	-	-
C60	Penis	-	-	-	-	-	-	-	-	-	-	-	-	-	1	-	-	-	1	0.68
C61	Prostate	-	-	-	-	-	-	-	-	-	-	-	-	-	-	-	-	-	-	-
C62	Testis	-	-	-	-	-	-	-	-	-	-	-	-	-	-	-	-	-	-	-
C63	Other Male Genital	-	-	-	-	-	-	-	-	-	-	-	-	-	-	-	-	-	-	-
C64	Kidney etc.	-	-	-	-	-	-	-	-	-	-	-	-	-	-	-	1	-	1	0.68
C65	Renal Pelvis	-	-	-	-	-	-	-	-	-	-	-	-	-	-	-	-	-	-	-
C66	Ureter	-	-	-	-	-	-	-	-	-	-	-	-	-	-	-	-	-	-	-
C67	Bladder	-	-	-	-	-	-	-	-	-	-	-	-	-	-	-	1	-	1	0.68
C68	Uns. Urinary Organs	-	-	-	-	-	-	-	-	-	-	-	-	-	-	-	-	-	-	-
C69	Eye	-	-	-	-	-	-	-	-	-	-	-	-	-	-	-	-	-	-	-
C70-72	Brain, Nervous System	-	-	-	-	-	-	-	-	-	-	-	-	1	-	-	-	-	1	0.68
C73	Thyroid	-	-	-	-	-	-	-	-	-	-	-	-	-	-	-	-	-	-	-
C74	Adrenal Gland	-	-	-	-	-	-	-	-	-	-	-	-	-	-	-	-	-	-	-
C77	Sec Lymph Nodes	-	-	-	-	-	-	-	-	-	-	-	-	-	-	-	-	-	-	-
C78	Sec Resp & Digestive	-	-	-	-	-	-	-	-	-	-	-	-	-	-	-	-	-	-	-
C79	Sec Others	-	-	-	-	-	-	-	-	-	-	-	-	-	-	-	-	-	-	-
C81	Hodgkins Disease	-	-	-	-	-	-	-	-	-	-	-	-	-	-	-	-	-	-	-
C82-85, C96	NHL	-	-	-	-	-	-	-	-	-	-	-	-	1	-	-	-	1	2	1.37
C90	Multiple Myeloma	-	-	-	-	-	-	-	-	-	-	-	-	-	-	-	-	-	-	-
C91	Lymphoid Leuk.	-	-	-	-	1	-	-	-	-	-	-	-	-	-	-	-	-	1	0.68
C92-94	Myeloid Leukaemia	-	1	-	-	-	-	-	-	-	-	-	-	-	-	-	-	-	1	0.68
C95	Leukaemia Uns	-	-	-	-	-	-	-	-	-	-	-	-	-	-	-	-	-	-	-
O&U	Other and Uns	-	-	-	-	1	-	2	-	1	6	8	6	16	6	11	8	4	69	47.26
	<b>All Sites</b>	-	<b>1</b>	-	-	<b>4</b>	<b>1</b>	<b>3</b>	-	<b>5</b>	<b>11</b>	<b>19</b>	<b>15</b>	<b>33</b>	<b>14</b>	<b>18</b>	<b>15</b>	<b>7</b>	<b>146</b>	<b>100.00</b>

**TABLE SKM-7 (b): Number of Cancer Deaths by Five Year Age Group and Site (ICD-10):  
2003-2004 – Females**

*% = Relative Proportion of Cancers of All Sites.*

**Sikkim State**

ICD-10	Site	0-4	5-9	10-14	15-19	20-24	25-29	30-34	35-39	40-44	45-49	50-54	55-59	60-64	65-69	70-74	75+	Unkn	Total	%
C00	Lip	-	-	-	-	-	-	-	-	-	-	-	-	-	-	-	-	-	-	-
C01-02	Tongue	-	-	-	-	-	-	-	-	-	-	-	-	-	-	-	-	-	-	-
C03-06	Mouth	-	-	-	-	-	-	-	-	-	-	-	-	-	-	-	-	-	-	-
C07-8	Salivary Gland	-	-	-	-	-	1	-	-	-	-	-	-	-	-	-	-	-	1	0.96
C09	Tonsil	-	-	-	-	-	-	-	-	-	-	1	-	-	-	-	-	-	1	0.96
C10	Oth. Oropharynx	-	-	-	-	-	-	-	-	-	-	-	-	-	-	-	-	-	-	-
C11	Nasopharynx	-	-	-	-	-	-	1	-	-	-	-	-	-	-	-	-	-	1	0.96
C12-13	Hypopharynx	-	-	-	-	-	-	-	-	-	-	-	-	1	2	-	-	-	3	2.88
C14	Pharynx Unspecified	-	-	-	-	-	-	-	-	-	-	-	-	-	-	-	-	-	-	-
C15	Oesophagus	-	-	-	-	-	-	-	-	-	2	-	-	2	2	3	-	-	9	8.65
C16	Stomach	-	-	-	-	-	-	-	-	-	-	-	1	-	2	-	-	1	4	3.85
C17	Small Intestine	-	-	-	-	-	-	-	-	-	-	-	-	-	-	-	-	-	-	-
C18	Colon	-	-	-	-	-	-	-	-	-	-	-	-	-	-	-	-	-	-	-
C19-20	Rectum	-	-	-	-	-	-	-	-	-	-	-	-	-	1	-	-	-	1	0.96
C21	Anus & Anal Canal	-	-	-	-	-	-	-	-	-	-	-	-	-	-	-	-	-	-	-
C22	Liver	-	-	-	-	-	-	-	-	-	1	-	1	1	-	-	-	-	3	2.88
C23-24	Gallbladder etc.	-	-	-	-	-	-	-	-	-	1	-	-	-	2	-	-	-	3	2.88
C25	Pancreas	-	-	-	-	-	-	-	-	-	-	-	-	-	-	-	-	-	-	-
C30-31	Nose, Sinuses etc.	-	-	-	-	-	-	-	-	-	-	-	-	-	-	-	-	-	-	-
C32	Larynx	-	-	-	-	-	-	-	-	1	-	-	-	-	2	-	-	-	3	2.88
C33-34	Lung etc.	-	-	-	-	-	-	-	-	-	1	1	-	4	1	1	1	-	9	8.65
C37-38	Other Thoracic Organs	-	-	-	-	-	-	-	-	-	-	-	-	-	-	-	-	-	-	-
C40-41	Bone	-	-	-	-	-	-	-	-	1	1	-	-	-	-	-	-	-	2	1.92
C43	Melanoma of Skin	-	-	-	-	-	-	-	-	-	-	-	-	-	-	-	-	-	-	-
C44	Other Skin	-	-	-	-	-	-	-	-	-	-	-	-	1	-	-	-	-	1	0.96
C45	Mesothelioma	-	-	-	-	-	-	-	-	-	-	-	-	-	-	-	-	-	-	-
C46	Kaposi Sarcoma	-	-	-	-	-	-	-	-	-	-	-	-	-	-	-	-	-	-	-
C47+C49	Conn. & Soft Tissue	-	1	-	-	-	-	-	-	-	-	-	1	-	-	-	-	-	2	1.92
C50	Breast	-	-	-	-	-	-	-	1	1	-	1	-	1	-	-	-	-	4	3.85
C51	Vulva	-	-	-	-	-	-	-	-	-	-	-	-	-	-	-	-	-	-	-
C52	Vagina	-	-	-	-	-	-	-	-	-	-	-	-	-	-	-	-	-	-	-
C53	Cervix Uteri	-	-	-	-	-	-	1	-	1	-	-	2	-	1	1	1	-	7	6.73
C54	Corpus Uteri	-	-	-	-	-	-	-	-	-	-	-	-	1	-	-	-	-	1	0.96
C55	Uterus Unspecified	-	-	-	-	-	-	-	-	-	-	-	-	-	1	-	-	-	1	0.96
C56	Ovary etc.	-	-	-	-	-	-	-	-	-	1	-	-	-	-	-	1	-	2	1.92
C57	Other Female Genital	-	-	-	-	-	-	-	-	-	-	-	-	-	-	-	-	-	-	-
C58	Placenta	-	-	-	-	-	-	-	-	-	-	-	-	-	-	-	-	-	-	-
C64	Kidney etc.	-	-	-	-	-	-	-	-	-	-	-	-	-	-	-	-	-	-	-
C65	Renal Pelvis	-	-	-	-	-	-	-	-	-	-	-	-	-	-	-	-	-	-	-
C66	Ureter	-	-	-	-	-	-	-	-	-	-	-	-	-	-	-	-	-	-	-
C67	Bladder	-	-	-	-	-	-	-	-	-	-	-	-	-	-	-	-	-	-	-
C68	Uns. Urinary Organs	-	-	-	-	-	-	-	-	-	-	-	-	-	-	-	-	-	-	-
C69	Eye	-	-	-	-	-	-	-	-	-	-	-	-	-	-	-	-	-	-	-
C70-72	Brain, Nervous System	-	-	-	-	-	-	-	-	1	-	-	-	-	-	-	-	-	1	0.96
C73	Thyroid	-	-	-	-	-	-	-	-	1	-	-	1	-	-	-	-	-	2	1.92
C74	Adrenal Gland	-	-	-	-	-	-	-	-	-	-	-	-	-	-	-	-	-	-	-
C77	Sec Lymph Nodes	-	-	-	-	-	-	-	-	-	-	-	-	-	-	-	-	-	-	-
C78	Sec Resp & Digestive	-	-	-	-	-	-	-	-	-	-	-	-	-	-	-	-	-	-	-
C79	Sec Others	-	-	-	-	-	-	-	-	-	-	-	-	-	-	-	-	-	-	-
C81	Hodgkins Disease	-	-	-	-	-	-	-	-	-	-	-	-	-	-	-	-	-	-	-
C82-85,C96	NHL	-	-	-	-	-	-	1	-	-	-	-	-	-	-	-	-	-	1	0.96
C90	Multiple Myeloma	-	-	-	-	-	-	-	-	-	-	-	-	-	-	-	-	-	-	-
C91	Lymphoid Leuk.	-	-	-	-	-	-	-	-	-	-	-	-	-	-	-	-	-	-	-
C92-94	Myeloid Leukaemia	-	-	-	-	-	-	-	-	-	-	-	1	-	-	-	-	-	1	0.96
C95	Leukaemia Uns	-	-	-	-	-	-	-	1	-	-	-	-	-	-	-	-	-	1	0.96
O&U	Other and Uns	1	-	-	-	1	1	-	1	2	2	3	3	6	7	6	4	3	40	38.46
	<b>All Sites</b>	<b>1</b>	<b>1</b>	<b>-</b>	<b>-</b>	<b>1</b>	<b>2</b>	<b>3</b>	<b>3</b>	<b>8</b>	<b>9</b>	<b>6</b>	<b>11</b>	<b>16</b>	<b>21</b>	<b>11</b>	<b>7</b>	<b>4</b>	<b>104</b>	<b>100.00</b>

**TABLE: SKM-8(a):**  
**Average Annual Age Specific, Crude (CR), Age Adjusted (AAR) (with Standard Error(SE)) and**  
**Truncated (35-64 Yrs) (TR) Mortality Rate per 100,000 population: 2003-2004 - Males**  
**Sikkim State**

ICD-10	0-4	5-9	10-14	15-19	20-24	25-29	30-34	35-39	40-44	45-49	50-54	55-59	60-64	65-69	70-74	>75	CR	AAR	SE	TR
C00	-	-	-	-	-	-	-	-	-	-	-	-	-	-	-	-	-	-	-	-
C01-02	-	-	-	-	-	-	-	-	-	3.5	-	-	8.0	-	-	-	0.3	0.5	0.38	1.7
C03-06	-	-	-	-	-	-	-	-	2.8	-	-	-	-	-	-	-	0.2	0.2	0.17	0.5
C07-8	-	-	-	-	-	-	-	-	-	-	-	-	-	-	-	-	-	-	-	-
C09	-	-	-	-	-	-	-	-	-	-	-	-	-	-	-	-	-	-	-	-
C10	-	-	-	-	-	-	-	-	-	-	-	-	-	-	-	-	-	-	-	-
C11	-	-	-	-	-	-	-	-	-	-	14.2	13.0	16.1	-	-	-	1.1	1.9	0.71	6.0
C12-13	-	-	-	-	-	-	-	-	-	-	4.7	-	8.0	-	-	13.9	0.5	0.8	0.49	1.8
C14	-	-	-	-	-	-	-	-	-	-	-	-	-	-	-	-	-	-	-	-
C15	-	-	-	-	-	-	2.1	-	-	3.5	9.5	19.5	32.1	10.3	13.4	27.9	2.6	4.0	1.05	8.9
C16	-	-	-	-	1.5	-	-	-	5.5	-	14.2	6.5	16.1	41.3	26.9	13.9	2.6	4.1	1.06	6.3
C17	-	-	-	-	-	-	-	-	-	-	-	-	-	-	-	-	-	-	-	-
C18	-	-	-	-	-	-	-	-	-	-	-	-	-	-	-	-	-	-	-	-
C19-20	-	-	-	-	-	1.8	-	-	-	-	-	-	-	-	-	-	0.2	0.1	0.15	-
C21	-	-	-	-	-	-	-	-	-	-	-	-	8.0	-	-	-	0.2	0.3	0.32	1.0
C22	-	-	-	-	-	-	-	-	-	3.5	9.5	6.5	8.0	20.6	26.9	-	1.4	2.4	0.81	4.1
C23-24	-	-	-	-	-	-	-	-	-	-	-	-	-	-	-	-	-	-	-	-
C25	-	-	-	-	-	-	-	-	-	-	-	-	-	-	-	-	-	-	-	-
C30-31	-	-	-	-	-	-	-	-	-	-	-	-	-	-	-	-	-	-	-	-
C32	-	-	-	-	-	-	-	-	-	3.5	-	6.5	24.1	-	-	13.9	1.1	1.7	0.71	4.6
C33-34	-	-	-	-	-	-	-	-	-	3.5	-	6.5	-	-	13.4	-	0.5	0.7	0.43	1.5
C37-38	-	-	-	-	-	-	-	-	2.8	-	-	-	-	-	-	-	0.2	0.2	0.17	0.5
C40-41	-	-	-	-	-	-	-	-	-	-	-	-	-	-	13.4	-	0.2	0.3	0.27	-
C43	-	-	-	-	-	-	-	-	-	-	-	-	-	-	-	-	-	-	-	-
C44	-	-	-	-	1.5	-	-	-	-	-	-	-	-	-	-	-	0.2	0.1	0.12	-
C45	-	-	-	-	-	-	-	-	-	-	-	-	-	-	-	-	-	-	-	-
C46	-	-	-	-	-	-	-	-	-	-	-	-	-	-	-	-	-	-	-	-
C47+C49	-	-	-	-	-	-	-	-	-	-	-	-	-	-	-	-	-	-	-	-
C50	-	-	-	-	-	-	-	-	-	-	-	-	-	-	-	-	-	-	-	-
C60	-	-	-	-	-	-	-	-	-	-	-	-	-	10.3	-	-	0.2	0.3	0.31	-
C61	-	-	-	-	-	-	-	-	-	-	-	-	-	-	-	-	-	-	-	-
C62	-	-	-	-	-	-	-	-	-	-	-	-	-	-	-	-	-	-	-	-
C63	-	-	-	-	-	-	-	-	-	-	-	-	-	-	-	-	-	-	-	-
C64	-	-	-	-	-	-	-	-	-	-	-	-	-	-	-	13.9	0.2	0.3	0.28	-
C65	-	-	-	-	-	-	-	-	-	-	-	-	-	-	-	-	-	-	-	-
C66	-	-	-	-	-	-	-	-	-	-	-	-	-	-	-	-	-	-	-	-
C67	-	-	-	-	-	-	-	-	-	-	-	-	-	-	-	13.9	0.2	0.3	0.28	-
C68	-	-	-	-	-	-	-	-	-	-	-	-	-	-	-	-	-	-	-	-
C69	-	-	-	-	-	-	-	-	-	-	-	-	-	-	-	-	-	-	-	-
C70-72	-	-	-	-	-	-	-	-	-	-	-	-	8.0	-	-	-	0.2	0.3	0.32	1.0
C73	-	-	-	-	-	-	-	-	-	-	-	-	-	-	-	-	-	-	-	-
C74	-	-	-	-	-	-	-	-	-	-	-	-	-	-	-	-	-	-	-	-
C77	-	-	-	-	-	-	-	-	-	-	-	-	-	-	-	-	-	-	-	-
C78	-	-	-	-	-	-	-	-	-	-	-	-	-	-	-	-	-	-	-	-
C79	-	-	-	-	-	-	-	-	-	-	-	-	-	-	-	-	-	-	-	-
C81	-	-	-	-	-	-	-	-	-	-	-	-	-	-	-	-	-	-	-	-
C82-85,C96	-	-	-	-	-	-	-	-	-	-	-	-	8.0	-	-	-	0.3	0.3	0.32	1.0
C90	-	-	-	-	-	-	-	-	-	-	-	-	-	-	-	-	-	-	-	-
C91	-	-	-	-	1.5	-	-	-	-	-	-	-	-	-	-	-	0.2	0.1	0.12	-
C92-94	-	1.5	-	-	-	-	-	-	-	-	-	-	-	-	-	-	0.2	0.1	0.15	-
C95	-	-	-	-	-	-	-	-	-	-	-	-	-	-	-	-	-	-	-	-
O&U	-	-	-	-	1.5	-	4.2	-	2.8	21.0	37.8	39.0	128.5	61.9	147.9	111.4	11.0	17.4	2.20	32.3
<b>All</b>	-	<b>1.5</b>	-	-	<b>6.1</b>	<b>1.8</b>	<b>6.3</b>	-	<b>13.8</b>	<b>38.5</b>	<b>89.9</b>	<b>97.5</b>	<b>265.0</b>	<b>144.5</b>	<b>242.0</b>	<b>208.9</b>	<b>23.3</b>	<b>36.6</b>	<b>3.17</b>	<b>71.4</b>

**TABLE: SKM-8(b):**  
**Average Annual Age Specific, Crude (CR), Age Adjusted (AAR) (with Standard Error(SE)) and**  
**Truncated (35-64 Yrs) (TR) Mortality Rate per 100,000 population: 2003-2004 - Females**  
**Sikkim State**

ICD-10	0-4	5-9	10-14	15-19	20-24	25-29	30-34	35-39	40-44	45-49	50-54	55-59	60-64	65-69	70-74	>75	CR	AAR	SE	TR
C00	-	-	-	-	-	-	-	-	-	-	-	-	-	-	-	-	-	-	-	-
C01-02	-	-	-	-	-	-	-	-	-	-	-	-	-	-	-	-	-	-	-	-
C03-06	-	-	-	-	-	-	-	-	-	-	-	-	-	-	-	-	-	-	-	-
C07-8	-	-	-	-	-	2.0	-	-	-	-	-	-	-	-	-	-	0.2	0.2	0.16	-
C09	-	-	-	-	-	-	-	-	-	-	6.3	-	-	-	-	-	0.2	0.3	0.32	1.0
C10	-	-	-	-	-	-	-	-	-	-	-	-	-	-	-	-	-	-	-	-
C11	-	-	-	-	-	-	2.6	-	-	-	-	-	-	-	-	-	0.2	0.2	0.16	-
C12-13	-	-	-	-	-	-	-	-	-	-	-	-	9.8	26.0	-	-	0.5	1.2	0.68	1.3
C14	-	-	-	-	-	-	-	-	-	-	-	-	-	-	-	-	-	-	-	-
C15	-	-	-	-	-	-	-	-	-	9.5	-	-	19.6	26.0	57.1	-	1.6	3.3	1.10	4.4
C16	-	-	-	-	-	-	-	-	-	-	-	9.1	-	26.0	-	-	0.7	1.1	0.66	1.2
C17	-	-	-	-	-	-	-	-	-	-	-	-	-	-	-	-	-	-	-	-
C18	-	-	-	-	-	-	-	-	-	-	-	-	-	-	-	-	-	-	-	-
C19-20	-	-	-	-	-	-	-	-	-	-	-	-	-	13.0	-	-	0.2	0.4	0.39	-
C21	-	-	-	-	-	-	-	-	-	-	-	-	-	-	-	-	-	-	-	-
C22	-	-	-	-	-	-	-	-	-	4.8	-	9.1	9.8	-	-	-	0.5	1.0	0.61	3.4
C23-24	-	-	-	-	-	-	-	-	-	4.8	-	-	-	26.0	-	-	0.5	1.1	0.62	0.9
C25	-	-	-	-	-	-	-	-	-	-	-	-	-	-	-	-	-	-	-	-
C30-31	-	-	-	-	-	-	-	-	-	-	-	-	-	-	-	-	-	-	-	-
C32	-	-	-	-	-	-	-	-	3.7	-	-	-	-	26.0	-	-	0.5	1.0	0.60	0.7
C33-34	-	-	-	-	-	-	-	-	-	4.8	6.3	-	39.2	13.0	19.0	18.5	1.6	3.3	1.11	7.0
C37-38	-	-	-	-	-	-	-	-	-	-	-	-	-	-	-	-	-	-	-	-
C40-41	-	-	-	-	-	-	-	-	3.7	4.8	-	-	-	-	-	-	0.4	0.5	0.36	1.6
C43	-	-	-	-	-	-	-	-	-	-	-	-	-	-	-	-	-	-	-	-
C44	-	-	-	-	-	-	-	-	-	-	-	-	9.1	-	-	-	0.2	0.4	0.36	1.2
C45	-	-	-	-	-	-	-	-	-	-	-	-	-	-	-	-	-	-	-	-
C46	-	-	-	-	-	-	-	-	-	-	-	-	-	-	-	-	-	-	-	-
C47+C49	-	1.5	-	-	-	-	-	-	-	-	-	9.1	-	-	-	-	0.4	0.5	0.39	1.2
C50	-	-	-	-	-	-	-	2.8	3.7	-	6.3	-	9.8	-	-	-	0.7	1.1	0.58	3.5
C51	-	-	-	-	-	-	-	-	-	-	-	-	-	-	-	-	-	-	-	-
C52	-	-	-	-	-	-	-	-	-	-	-	-	-	-	-	-	-	-	-	-
C53	-	-	-	-	-	-	2.6	-	3.7	-	-	18.2	-	13.0	19.0	18.5	1.3	2.3	0.88	3.1
C54	-	-	-	-	-	-	-	-	-	-	-	-	9.8	-	-	-	0.2	0.4	0.39	1.3
C55	-	-	-	-	-	-	-	-	-	-	-	-	-	13.0	-	-	0.2	0.4	0.39	-
C56	-	-	-	-	-	-	-	-	4.8	-	-	-	-	-	-	18.5	0.4	0.7	0.47	0.9
C57	-	-	-	-	-	-	-	-	-	-	-	-	-	-	-	-	-	-	-	-
C58	-	-	-	-	-	-	-	-	-	-	-	-	-	-	-	-	-	-	-	-
C64	-	-	-	-	-	-	-	-	-	-	-	-	-	-	-	-	-	-	-	-
C65	-	-	-	-	-	-	-	-	-	-	-	-	-	-	-	-	-	-	-	-
C66	-	-	-	-	-	-	-	-	-	-	-	-	-	-	-	-	-	-	-	-
C67	-	-	-	-	-	-	-	-	-	-	-	-	-	-	-	-	-	-	-	-
C68	-	-	-	-	-	-	-	-	-	-	-	-	-	-	-	-	-	-	-	-
C69	-	-	-	-	-	-	-	-	-	-	-	-	-	-	-	-	-	-	-	-
C70-72	-	-	-	-	-	-	-	-	3.7	-	-	-	-	-	-	-	0.2	0.2	0.22	0.7
C73	-	-	-	-	-	-	-	-	3.7	-	-	9.1	-	-	-	-	0.4	0.6	0.43	1.9
C74	-	-	-	-	-	-	-	-	-	-	-	-	-	-	-	-	-	-	-	-
C77	-	-	-	-	-	-	-	-	-	-	-	-	-	-	-	-	-	-	-	-
C78	-	-	-	-	-	-	-	-	-	-	-	-	-	-	-	-	-	-	-	-
C79	-	-	-	-	-	-	-	-	-	-	-	-	-	-	-	-	-	-	-	-
C81	-	-	-	-	-	-	-	-	-	-	-	-	-	-	-	-	-	-	-	-
C82-85,C96	-	-	-	-	-	-	2.6	-	-	-	-	-	-	-	-	-	0.2	0.2	0.16	-
C90	-	-	-	-	-	-	-	-	-	-	-	-	-	-	-	-	-	-	-	-
C91	-	-	-	-	-	-	-	-	-	-	-	-	-	-	-	-	-	-	-	-
C92-94	-	-	-	-	-	-	-	-	-	-	-	9.1	-	-	-	-	0.2	0.4	0.36	1.2
C95	-	-	-	-	-	-	-	2.8	-	-	-	-	-	-	-	-	0.2	0.2	0.17	0.5
O&U	2.0	-	-	-	1.8	2.0	-	2.8	7.5	9.5	19.0	27.4	58.7	91.0	114.2	74.0	7.3	12.6	2.12	18.0
All	2.0	1.5	-	-	1.8	4.1	7.8	8.3	29.9	42.9	37.9	100.3	156.6	272.9	209.4	129.5	19.0	33.3	3.42	55.0

---

## ADDRESSES

**Indian Council of Medical Research (Headquarters):** V.Ramalingaswami Bhawan, Ansari Nagar, New Delhi – 110 029. *Email : icmrhqds@sansad.nic.in*

**Coordinating Unit of National Cancer Registry Programme:** No. 557, 'Srinivasa Nilaya', New BEL Road, 7<sup>th</sup> Main, Dollars Colony, Bangalore – 560 094. *Email : ncrpblr@canceratlasindia.org, ank@blr.vsnl.net.in* Website : [www.ncrpindia.org](http://www.ncrpindia.org), [www.canceratlasindia.org](http://www.canceratlasindia.org)

**Monitoring Unit of North Eastern Regional Cancer Registry:** Regional Medical Research Centre (N.E), Indian Council of Medical Research, P.B.No. 105, Dibrugarh – 786 001. *Email : jmahanta@hotmail.Com*

### Cancer Registries

**Bangalore (PBCR & HBCR) :** Kidwai Memorial Institute of Oncology, Dr. M.H.Marigowda Road, Bangalore – 560 029. *Email: kidwai@kar.nic.in; Website: <http://www.kar.nic.in/kidwai>*

**Barshi (PBCR) :** Nargis Dutt Memorial Cancer Hospital, Barshi – 413 401 (Solapur), Maharashtra. *Email : spr\_bmnene@sancharnet.in, spr\_bmnenendmch@sancharnet.in*

**Bhopal (PBCR) :** Department of Pathology, Gandhi Medical College, Bhopal – 462 001. *Email : athulshrivastava721@yahoo.co.in*

**Chennai (PBCR & HBCR) :** Cancer Institute (WIA), 18, Sardar Patel Road, Chennai- 600020. *Email : cancer\_institute\_wia@vsnl.com*

**Delhi (PBCR) :** Institute of Rotary Cancer Hospital, Department of Pathology, All India Institute of Medical Sciences, Ansari Nagar, New Delhi – 110 029.

**Mumbai (PBCR) :** Indian Cancer Society, 74, Jerbai Wadia Road, Parel, P.O. Box No. 6033, Mumbai – 400 012. *Email : bcrics@vsnl.com* Website : [www.indiancancersociety.org](http://www.indiancancersociety.org)

**Mumbai (HBCR) :** Tata Memorial Hospital, Parel, Mumbai – 400 012.

**Thiruvananthapuram (HBCR) :** Regional Cancer Centre, Medical College Campus, Thiruvananthapuram – 695 011. *Email : rccvm@md2.vsnl.net.in.*

**Dibrugarh District (PBCR & HBCR):** Assam Medical College, Dibrugarh – 786 002.(ASSAM). *Email : pbcr\_dibrugarh@rediffmail.com*

**Kamrup Urban District (PBCR):** Dr.Bhubaneswar Borooh Cancer Institute, Guwahati -781 006. (ASSAM). *Email : dr\_j\_sarma@rediffmail.com*

**Silchar Town (PBCR):** Silchar Medical College, Silchar -788 014 (ASSAM). *Email : pbcrsmc@rediffmail.com, pbcrsmc@indiatimes.com*

**Imphal west District (PBCR) :** Regional Institute of Medical Sciences , Imphal – 795 004 (MANIPUR). *Email : pathlabs@yahoo.com*

**Mizoram State (PBCR) :** Civil Hospital, Aizawl- – 796 001, Mizoram. *Email : ezomawia@hotmail.com*

**Sikkim State (PBCR) :** Sir Thutob Namgyal Memorial Referral Hospital, Gangtok-737 101, Sikkim. *Email: slg\_yogi@sancharnet.in*

---

## Steering / Monitoring Committee /Other Members

Dr P.S.S. Sundar Rao (Former Director, Schieffelin Leprosy Research & Training Centre, S.L.R. Sanatorium, Karigiri, Tamil Nadu), No.88, Kuvempu Layout, Gubbi Cross, Kothanur, Bangalore – 560 077. Email : psssr Rao@tIm\_india.org, psssr Rao@yahoo.co.in

Dr Usha K. Luthra, Sr. Adviser – Cancer Research – ICMR, J-202 – Somvihar, R.K.Puram, New Delhi – 110 022.

Dr P.C. Gupta, Director, Healis – Sekhsaria Institute of Public Health, 601 Great Eastern Chambers, Plot 28, Sector 11, CBD, Belapur (East), Navi Mumbai – 400 614.

Dr S. Radhakrishna (Former Director IRMS-ICMR, Chennai), D-201 High Rise Apartment, Lower Tank Bund Toad, Gandhinagar, Hyderabad – 500 080. *Email : radkrsna@hotmail.com*

Dr B.D.Gupta, Chairman, Professor Emeritus, Radiotherapy and Oncology, Dr Vikrant Gupta Memorial Foundation, 223, Sector 15-A, Chandigarh – 160 015.

Prof. N.C.Misra, Professor of Surgery (Oncology), 122, Faizabad Road, Near Indira Bridge, Lucknow – 226 007.

Dr R.N.Visweswara, Prof. of Pathology, Vydehi Institute of Medical Sciences and Research Centre, No.82, EPIP Area, White Filed, Bangalore – 560 066.

Mr.P. Gangadharan, Consultant – Oncology Centre, Amrita Institute of Medical Sciences, Elamakkara P.O., Kochi- 682 026. *Email : gangadharanp@aimshospital.org*

Dr Kusum Joshi, Prof. & Head of Histopathology, PGIMER, Chandigarh – 160 012.

*Chairman of North East Region Project:* Prof. R.C. Mahajan, SN Bose INSA Research Professor & Emeritus Professor, Epartment Of Parasitology, Postgraduate Institute of Medical, Education & Research, Chandigarh – 160 012. *Email : medinst@pgi.chd.nic.in*

*Coordinator of Special Cell at Kolkata:* Dr M. N. Bandopadhyay, Principal Investigator, Consultant Oncologist, Cancer Centre Welfare Home & Research Institute, Mahatma Gandhi Road, Thakurpukur, Kolkata 700 063. *Email : ccwhri@cal2.vsnl.net.in*

---

## *Other Publications of NCRP*

1. Annual Report 1982: National Cancer Registry, Indian Council of Medical Research, New Delhi, 1985
2. Annual Report 1983: National Cancer Registry, Indian Council of Medical Research, New Delhi, 1986
3. Annual Report 1984: National Cancer Registry, Indian Council of Medical Research, New Delhi, 1987
4. Annual Report 1985: National Cancer Registry, Indian Council of Medical Research, New Delhi, 1988
5. Annual Report 1986: National Cancer Registry, Indian Council of Medical Research, New Delhi, 1989
6. Annual Report 1987: National Cancer Registry Programme, Indian Council of Medical Research, New Delhi, 1989
7. Biennial Report 1988-1989: National Cancer Registry Programme, Indian Council of Medical Research, New Delhi, 1992
8. Consolidated Report of the Population Based Cancer Registries 1990-1996: National Cancer Registry Programme (ICMR), Bangalore, 2001
9. Consolidated Report of the Population Based Cancer Registries 1990-1996 Supplement: Year-wise Tabulation of Incident Cancers and Rates by Site and Gender: National Cancer Registry Programme(ICMR), Bangalore, 2001
10. Ten Year Consolidated Report of the Hospital Based Cancer Registries 1984-93: National Cancer Registry Programme (ICMR), Bangalore, 2001
11. NCRP - An Overview 1981-2001: National Cancer Registry Programme(ICMR), Bangalore, 2001
12. Two-Year Report of the Population Based Cancer Registries 1997-1998: National Cancer Registry Programme (ICMR), Bangalore, 2002
13. Five Year Consolidated Report on Hospital Based Cancer Registries : 1994-1998: National Cancer Registry Programme(ICMR), Bangalore, 2002
14. Development of an atlas of cancer in India. First All India Report 2001-2002 vol. I and II. [[www.canceratlasindia.org](http://www.canceratlasindia.org)]: National Cancer Registry Programme(ICMR), Bangalore, 2004
15. An Overview - Development of an atlas of cancer in India. First All India Report 2001-2002 vol. I and II. [[www.canceratlasindia.org](http://www.canceratlasindia.org)]: National Cancer Registry Programme(ICMR), Bangalore, 2004
16. Two-Year Report of the Population Based Cancer Registries 1999-2000: National Cancer Registry Programme(ICMR), Bangalore, 2005
17. Two-Year Report of the Hospital Based Cancer Registries 1999-2000: National Cancer Registry Programme (ICMR), Bangalore, 2005

