

POPULATION BASED CANCER REGISTRY, IMPHAL WEST DISTRICT

Regional Institute of Medical Sciences, Imphal

Prof L. Fimate, Director RIMS

Dr Th. Suresh, Director, Manipur Health Services

Prof Th. Tomcha, HOD, Radiotherapy, RIMS

Dr Th. Dhabali, Managing Director, Babina Diagnostic Centre, Imphal

Dr Kh. Palin, Managing Director, Shija Hospital & Research Institute, Langol

Dr Y. Mohen Singh, Principal Investigator

Dr Ellen Doris, Dr Kaushik Debnath, Dr Punyabati Devi,
Co-Investigators

The Population Based Cancer Registry (PBCR), located at Regional Institute of Medical Sciences (RIMS), Imphal is one of the six cancer registries in Northeastern India functioning under the National Cancer Registry Programme (NCRP) of the Indian Council of Medical Research (ICMR) since January 2003.

In the year 2001 and 2002, Regional Institute of Medical Sciences (RIMS), Imphal participated in WHO sponsored project entitled "Development of An Atlas of Cancer in India" as one of the centres. Its report shows high incidence and unique pattern of cancer in collaborating North Eastern States. The importance of setting up of the North Eastern Regional Cancer Registry (NERCR) was felt and thus established in the year 2003 with Regional Medical Research Centre (RMRC), Dibrugarh as the monitoring unit. Based on this the Regional Institute of Medical Sciences, Imphal was selected as one of the six centres for establishment of Population Based Cancer Registry (PBCR) others being Aizawl in Mizoram, Dibrugarh, Guwahati and Silchar in Assam and Gangtok in Sikkim.

Our centre was included in the network of cancer registries under NCRP and started functioning from January 2003. We were supposed to cover the entire state of Manipur, hence the staffs and budget were sanctioned accordingly but owing to the prevailing law and order situation, insurgency problems and difficult terrain, our Social Investigators had to face lots of unwanted, unavoidable circumstances in reaching out to those patients who are in far off places. Moreover our transport system is also not satisfactory, far below par. So, initially we started covering only the Imphal West District (most populated district) with an area of 519 sq.km and population 4,39,532 and then to cover up the whole of state with total area of 22,327 sq.km and total population of 23,88,634 (census 2001) from the year 2005 onwards.

STAFF

Recruitment of the staff was done through notification in local newspapers. Besides Principal and Co-Principal Investigators, a Medical Research officer, a Statistician and a Computer programmer, three Social Investigators - altogether six staff members were selected as sanctioned.

Medical Research Officer conducts a weekly meeting cum teaching programme where the working and difficulties faced by the staff are discussed and medical nomenclature elaborated.

WORKING OF THE REGISTRY

Initially, all the required baseline information such as coverage area, its population, list of medical institutions/hospitals, Nursing homes, laboratories etc. were collected. Our social investigators were introduced to the Superintendents and administrative officers of the various institutions/hospitals (both govt. & private), Nursing homes, laboratories in the registry area and requested to provide information on cancer cases to the registry staff. This helped us to acquire good rapport with them.

The overall supervision and guidance is provided by our Principal Investigator. The method of daily working and technical guidance as well as assessment of work done every week is done by the Medical Officer, Statistician takes the responsibility of tabulation of data collected and subsequent statistical evaluation. Computer operator helps in data entry and other technical works pertaining to uses of computer. Collection of basic data from patients and entering the same in the Proforma is done by the social investigators.

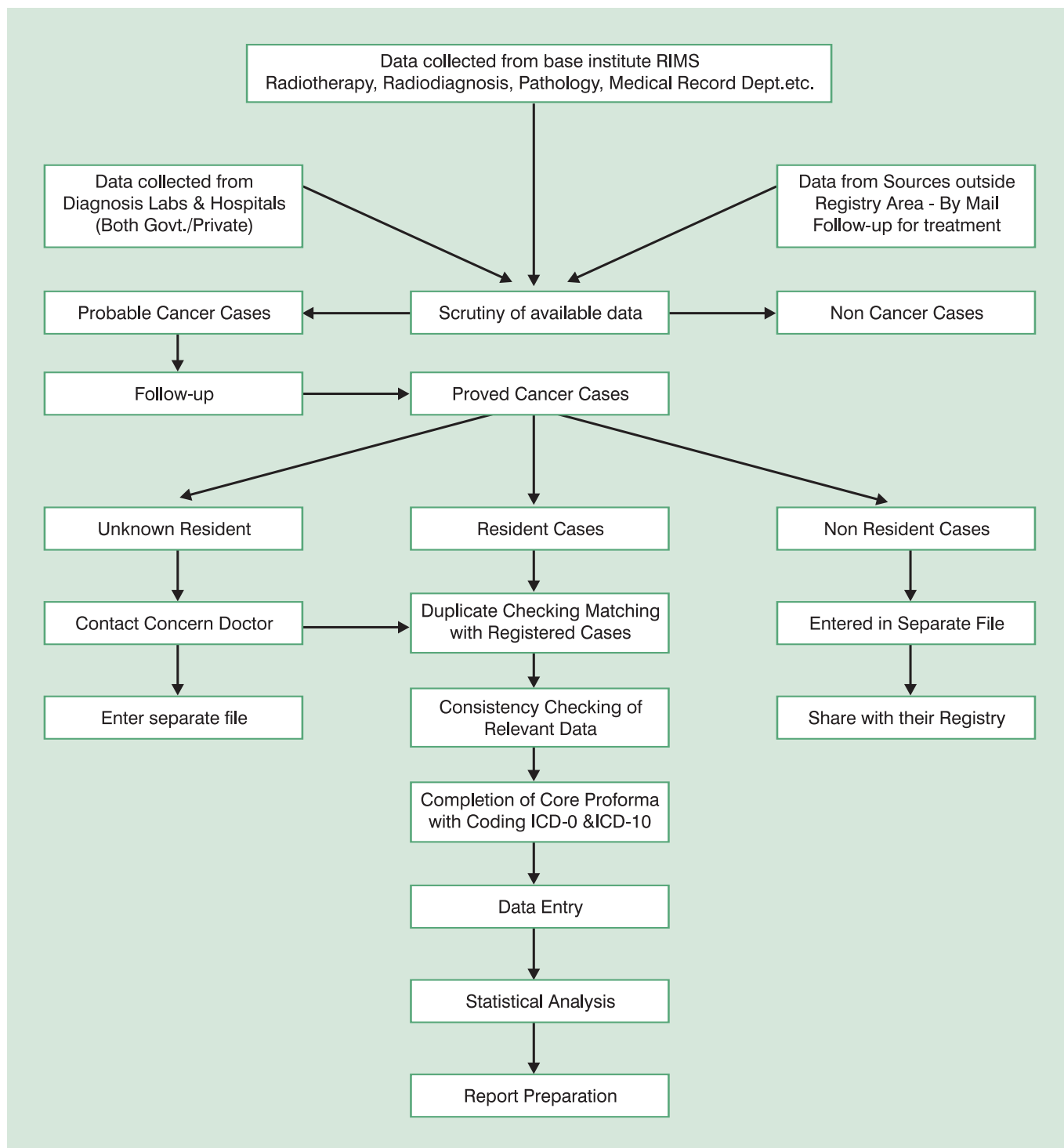
(A) *Method of Data Collection :*

Registration of cancer cases is done by active registration method. A weekly time table is chalked-out among the three social investigators to visit the various sources of registration which includes all government as well as private hospitals, nursing homes, diagnostic laboratories etc., The frequency of visit is determined by the bed strength of the cancer patients being diagnosed and treated there and also on the number of proved cancers obtained from various laboratories. They meet the cancer patients or their attendants (may be family member or close relative) to elicit the required information by personally interviewing them. At RIMS, particularly at Radiotherapy Department, every patient registered there or their attendants are interviewed at their first presentation to the hospital and collect socio-demographic details. Later case records of these patients are obtained from the case files to extract information on clinical details such as method of diagnosis, site of cancer, stage of the disease, treatment details etc. And then the confirmed cases of cancer are entered in our registry and those yet to be confirmed are kept for further follow up and verification through the concerned doctor in due course of time.

(B) *Identification of the cancer cases.*

Only those confirmed cases of cancer (either microscopically / radiologically / clinically etc.) who has been living in the registry area for at least a year at the time of diagnosis are registered. Only invasive cancer with 5th digit morphology code of '3' and '6' are reported. Benign tumors and in situ cancers are not included for analysis.

Flow Chart A : Working of Registry with Morbidity Data



(C) *Sources of Registration*

A list of main sources of registration along with its contribution in terms of percentage is given in Table 2. They include Department of Radiotherapy (both OPD and inward), Pathology (Histology/Cytology/Haematology) Radiodiagnosis, Medical Record and other Dept. of RIMS. Besides RIMS, there are also other government & private hospitals, nursing homes and diagnostic laboratories within our registry area. Still some of them are also outside our registry area, encountered only when they came for follow up at RIMS after being diagnosed and treated elsewhere.

(D) *Elimination of Duplicates*

Patients proved as cancer elsewhere are subsequently referred to Radiotherapy dept. of RIMS for further management. Detailed information is thus readily and reliably obtained directly from the patient or attendant, in such cases. Duplication of these as well as others obtained through pathologists/radiologists are eliminated by cross checking with those already entered in our registry.

As the data is collected from different sources, multiple entry for the same patient is usual. So we have to be always careful while checking for duplicates. However the combination of data from the various sources is found to be quite useful in completing the core proforma but sometimes create confusion also. (*Flow Chart A*)

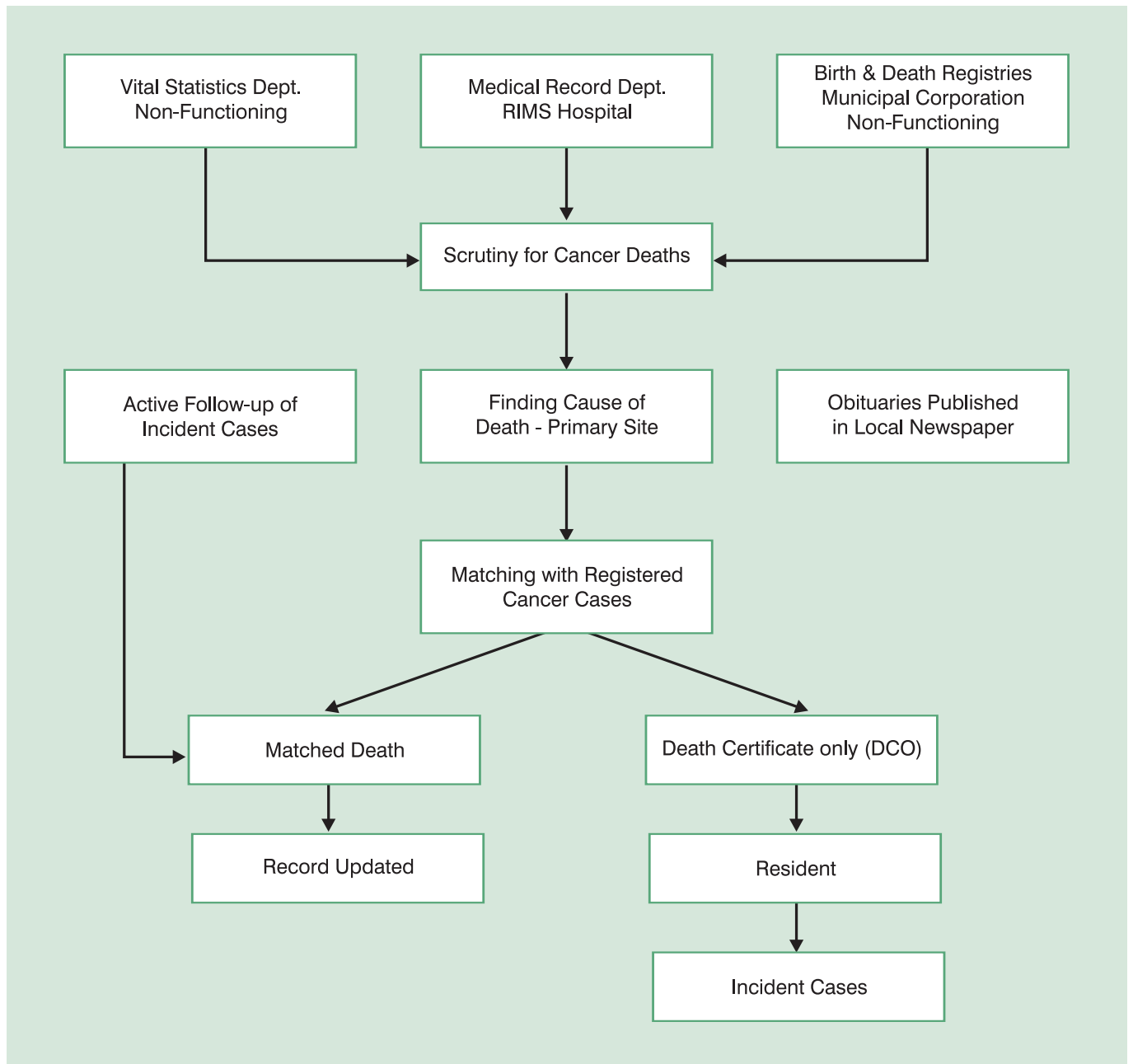
(E) *Working of Death Registration system, Certification and Mortality data collection:*

Death registration system and certification has been extremely poor in our entire set up. Of course compulsory registration of birth and death is very much there by law but nobody bothers. Records of Vital statistics Department, birth & death records (specially death) of the Municipal councils are not maintained for quite long time. Death certification is done only at hospital and according to our unique custom, as far as possible patients with chronic illness or who are in terminal stages are allowed to die at home where the local quacks took charge of declaration of death. Hence, less chance of certification except for few cases of insurance claims, otherwise not. So, initially our investigators had great difficulty in mortality data collection but in due course of time due to investigator's regular and persistent effort in following up of our registered cases this has improved the new practice of publishing obituaries in the various local papers is a boon to us. Thus, we are now able to trace them up in time and improve a lot in mortality data collection. We hope to discover more means and ways and improve further in this regard. Hence, our source of mortality data is very much limited. We are solely depending on Medical Record Dept. of RIMS hospital and active follow up of the incident cases. (*Flow Chart B*)

(F) *Difficulties encountered & methods used to solve them.*

Besides the prevailing law and order problems and existing systems of registrations and records of death in our state, our staff also encounters other forms of difficulties and some of them are as follows.

Flow Chart B : Working of Registry with Mortality Data



- Information obtained from various pathology laboratories, Radiological or private X-ray clinics often do not give full details of the patient like complete residential address etc. So every effort is made to trace patients to the source namely, referring doctor/ hospital/ nursing home/ medical records etc. When we approach them, there were also the addresses of the patients whose biopsies/surgical specimen which are not recorded and sometimes even the name of the referring doctor is not recorded. For that we personally persuade them to record the complete residential address; if possible their contact number and the names of the concerned doctors.
- We often fail to find the primary site of cancer and laterality of paired sites from the case files. It may take time for further investigations. In such case, we keep in touch with the concerned doctor and enquire from time to time for the final diagnosis. Still we may not be able to find out this information.
- Co-operation given by all the concerned personnel in private hospitals and laboratories are appreciable except one or two who want incentives only in the form of cash. For that our Principal Investigator has been kind enough to go personally and do the needful like making them understand the basic purpose, aim & objectives of our work.

Every week all the staff of our registry sit together and the week's work is assessed and the difficulties and problems faced by the various personnel are also discussed.

Registry Staff (PBCR), Imphal

Dr. H. Satyajyoti Singh	:	Medical Research Officer
Dr. O. Bijaya Devi	:	Statistician
Mr. R.K. Budhibanta Singh	:	Computer Programmer
Mr. L. Bhopendro Mangang	:	Social Investigator
Mr. Kh. Nabachandra Singh	:	Social Investigator
Mr. M. Surjit Meitei	:	Social Investigator

Figure IMP - 1
Population Pyramid showing Age Distribution: 2003-2004
Imphal West District

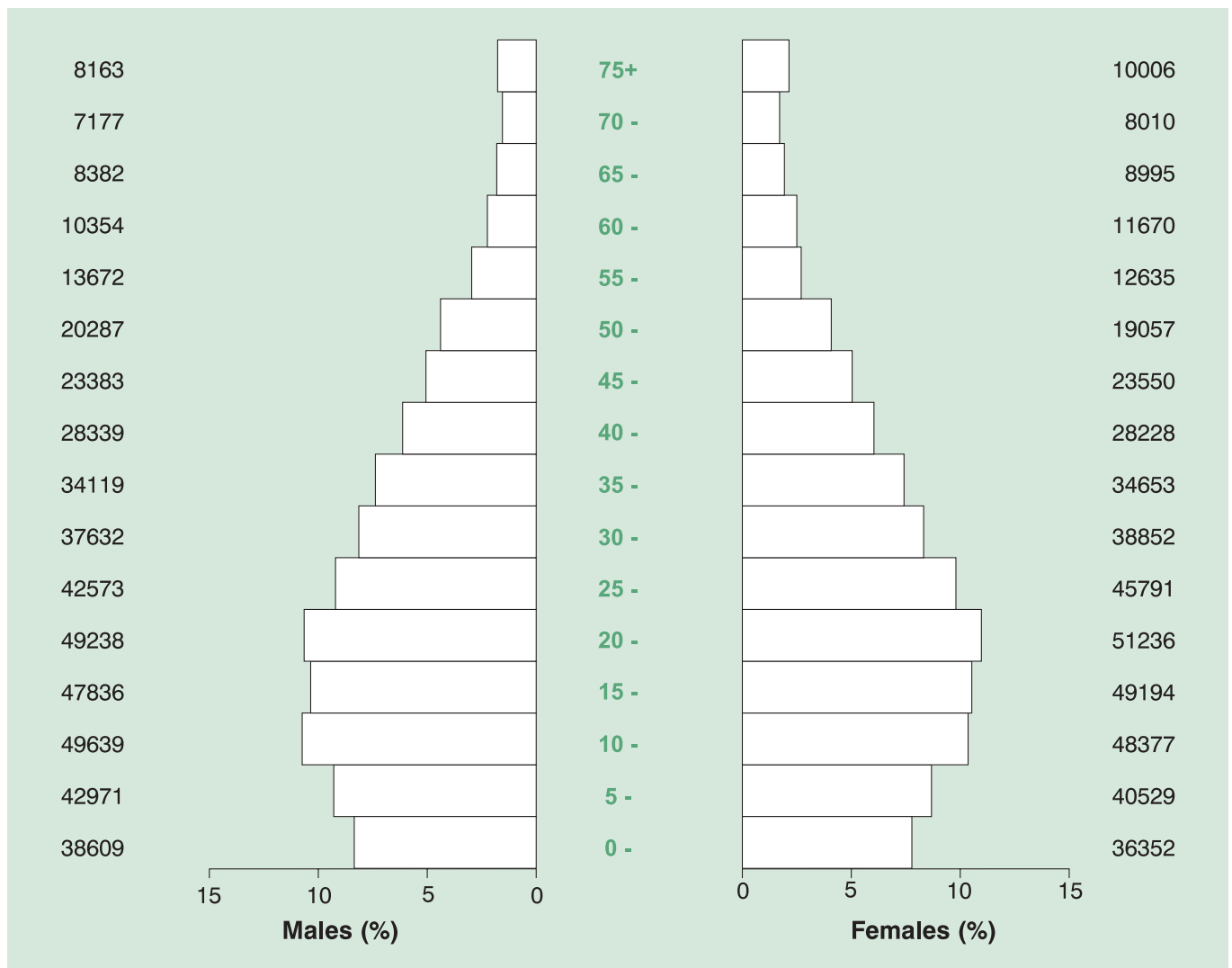


TABLE: IMP - 1

Population by Five Year Age Group and Gender: 2003-2004

Number and Relative Proportion (%)

Imphal West District

Age Group	MALES		FEMALES		TOTAL	
	Number	%	Number	%	Number	%
0-4	38609	8.35	36352	7.78	74961	8.06
5-9	42971	9.29	40529	8.68	83500	8.98
10-14	49639	10.74	48377	10.36	98016	10.54
15-19	47836	10.35	49194	10.53	97030	10.44
20-24	49238	10.65	51236	10.97	100474	10.81
25-29	42573	9.21	45791	9.80	88364	9.51
30-34	37632	8.14	38852	8.32	76484	8.23
35-39	34119	7.38	34653	7.42	68772	7.40
40-44	28339	6.13	28228	6.04	56567	6.09
45-49	23383	5.06	23550	5.04	46933	5.05
50-54	20287	4.39	19057	4.08	39344	4.23
55-59	13672	2.96	12635	2.70	26307	2.83
60-64	10354	2.24	11670	2.50	22024	2.37
65-69	8382	1.81	8995	1.93	17377	1.87
70-74	7177	1.55	8010	1.71	15187	1.63
75+	8163	1.77	10006	2.14	18169	1.95
Total	462374	100.0	467135	100.0	929509	100.0

TABLE : IMP- 2
Main Sources of Registration of Incident Cases of Cancer : 2003-2004
Imphal West District

Name of the Institution (Source Code)	Number	%
Babina Diagnostic Centre (002)	343	50.4
Regional Institute of Medical Sciences (001)	103	15.1
Aadarsh Clinical Laboratory(005)	36	5.3
Shija Hospitals and Research Institute (003)	27	4.0
Imphal Hospital and Research Centre (004)	20	2.9
Mona Clinical Laboratory (006)	19	2.8
Tata Memorial Hospital, Mumbai (028)	14	2.1
Down Town Hospital (026)	10	1.5
Eastern Diagnostic Centre (008)	7	1.0
Catholic Medical College, Vellore (029)	5	0.7
All India Institute of Medical Sciences, N. Delhi (030)	4	0.6
Jawaharlal Nehru Hospital (007)	3	0.4
Guwahati Neurology Research Centre (027)	3	0.4
Langol View Laboratory (010)	1	0.2
Raj Polyclinic (011)	1	0.2
New Tech Nursing Home (015)	1	0.2
Padma Medicare (016)	1	0.2
Saharia Path Lab. Guwahati (031)	1	0.2
Ecopath Centre, Guwahati (032)	1	0.2
Arya Hospital, Guwahati (033)	1	0.2
Others (999)	80	11.8
Total all Sources	681	100.0

The numbers and proportion listed are the minimum number of cases. Institutions could have registered / reported more cases, since duplicate registrations and non-resident/registry cases are not included.

**TABLE IMP-3 (a): Number of Incident Cancers by Five Year Age Group and Site (ICD-10):
2003-2004 – Males**

% = Relative Proportion of Cancers of All Sites.

Imphal West District

ICD-10	Site	0-4	5-9	10-14	15-19	20-24	25-29	30-34	35-39	40-44	45-49	50-54	55-59	60-64	65-69	70-74	75+	Unkn	Total	%
C00	Lip	-	-	-	-	-	-	-	-	-	-	-	-	-	-	-	-	-	-	-
C01-02	Tongue	-	-	-	-	-	-	-	-	1	1	1	1	3	-	1	1	-	9	2.84
C03-06	Mouth	-	-	-	-	-	-	-	-	1	-	-	-	1	1	2	1	-	6	1.89
C07-8	Salivary Gland	-	-	-	-	-	-	-	-	-	-	-	-	-	-	1	1	-	2	0.63
C09	Tonsil	-	-	-	-	-	-	-	-	-	-	-	-	2	1	1	1	-	5	1.58
C10	Oth. Oropharynx	-	-	-	-	-	-	-	-	-	-	1	-	1	-	-	-	-	2	0.63
C11	Nasopharynx	-	-	-	-	-	-	-	1	-	2	3	3	4	3	2	-	-	18	5.68
C12-13	Hypopharynx	-	-	-	-	-	-	-	-	1	1	-	-	4	4	-	-	-	10	3.15
C14	Pharynx Unspecified	-	-	-	-	-	-	-	-	-	-	-	-	-	-	1	1	-	2	0.63
C15	Oesophagus	-	-	-	-	-	-	1	-	-	-	6	8	4	1	2	1	-	23	7.26
C16	Stomach	-	-	-	-	-	-	-	-	1	-	1	1	9	4	4	6	-	26	8.20
C17	Small Intestine	-	-	-	-	-	-	-	-	1	-	-	-	2	-	-	-	-	3	0.95
C18	Colon	-	-	-	-	-	-	-	1	-	1	1	3	1	-	3	3	-	13	4.10
C19-20	Rectum	-	-	-	-	1	-	-	1	-	1	-	1	-	2	2	-	-	8	2.52
C21	Anus & Anal Canal	-	-	-	-	-	-	-	-	-	-	-	-	-	-	1	-	-	1	0.32
C22	Liver	-	-	-	-	-	-	-	2	-	-	-	-	1	-	-	2	-	5	1.58
C23-24	Gallbladder etc.	-	-	-	-	-	-	-	-	-	1	-	-	-	1	2	-	-	4	1.26
C25	Pancreas	-	-	-	-	-	-	-	-	1	-	-	-	-	-	-	-	-	1	0.32
C30-31	Nose, Sinuses etc.	-	-	-	-	-	-	-	-	1	-	-	1	-	-	-	-	-	2	0.63
C32	Larynx	-	-	-	-	-	-	-	1	2	1	1	1	-	1	2	2	-	11	3.47
C33-34	Lung etc.	-	-	-	-	-	-	-	1	-	2	7	9	7	13	14	12	-	65	20.50
C37-38	Other Thoracic Organs	-	-	-	-	-	-	-	-	-	-	1	-	-	-	-	-	-	1	0.32
C40-41	Bone	-	1	1	-	-	-	1	-	1	-	-	1	-	-	-	-	-	5	1.58
C43	Melanoma of Skin	-	-	-	-	-	-	-	-	-	-	-	1	-	-	-	-	-	1	0.32
C44	Other Skin	-	-	-	-	-	-	-	-	-	-	2	1	1	-	-	3	-	7	2.21
C45	Mesothelioma	-	-	-	-	-	-	-	-	-	-	-	-	-	-	-	-	-	-	-
C46	Kaposi Sarcoma	-	-	-	-	-	-	-	-	-	-	-	-	-	-	-	-	-	-	-
C47 + C49	Conn. & Soft Tissue	-	-	-	-	-	-	-	-	-	-	1	-	-	-	-	-	-	1	0.32
C50	Breast	-	-	-	-	-	-	-	-	-	-	1	1	-	-	-	-	-	2	0.63
C60	Penis	-	-	-	-	-	-	-	-	-	1	1	-	-	-	1	2	-	5	1.58
C61	Prostate	-	-	-	-	-	-	-	-	-	-	-	-	-	1	1	2	-	4	1.26
C62	Testis	1	-	-	-	-	-	-	1	-	-	-	-	-	1	-	-	-	3	0.95
C63	Other Male Genital	-	-	-	-	-	-	-	-	-	-	-	-	-	-	-	-	-	-	-
C64	Kidney etc.	-	-	-	-	-	-	-	-	-	-	-	1	-	2	-	-	-	3	0.95
C65	Renal Pelvis	-	-	-	-	-	-	-	-	-	-	-	-	-	-	-	-	-	-	-
C66	Ureter	-	-	-	-	-	-	-	-	-	-	-	-	-	-	-	-	-	-	-
C67	Bladder	-	-	-	-	-	-	-	-	1	-	-	2	1	-	1	-	-	5	1.58
C68	Uns. Urinary Organs	-	-	-	-	-	-	-	-	-	-	-	-	-	-	-	-	-	-	-
C69	Eye	1	-	-	-	-	-	-	-	-	-	-	-	-	-	-	-	-	1	0.32
C70-72	Brain, Nervous System	-	-	-	-	-	1	-	-	1	-	-	-	-	-	-	-	-	2	0.63
C73	Thyroid	-	-	-	-	1	-	-	-	-	-	-	-	2	-	-	-	-	3	0.95
C74	Adrenal Gland	-	-	-	-	-	-	-	1	-	-	-	-	1	-	-	-	-	2	0.63
C77	Sec Lymph Nodes	-	-	-	-	-	-	-	-	-	-	-	-	-	-	1	-	-	1	0.32
C78	Sec Resp & Digestive	-	-	-	-	-	-	-	-	-	-	-	-	-	-	-	-	-	-	-
C79	Sec Others	-	-	-	-	-	-	-	-	-	-	-	-	-	1	-	1	-	2	0.63
C81	Hodgkins Disease	-	-	-	-	-	-	-	-	-	-	1	-	1	-	-	-	-	2	0.63
C82-85, C96	NHL	-	1	-	1	-	-	5	2	-	-	1	1	-	2	1	2	-	16	5.05
C90	Multiple Myeloma	-	-	-	-	-	-	-	-	-	-	1	1	-	2	-	1	-	5	1.58
C91	Lymphoid Leuk.	3	1	1	1	1	-	-	-	-	-	-	-	-	-	1	-	-	8	2.52
C92-94	Myeloid Leukaemia	-	-	-	2	1	2	-	1	-	-	1	3	-	1	-	-	-	11	3.47
C95	Leukaemia Uns	1	-	-	-	-	-	-	-	-	-	-	-	-	-	-	-	-	1	0.32
O&U	Other and Uns	-	-	-	-	-	-	-	1	1	-	1	1	3	1	1	1	-	10	3.15
	All Sites	6	3	2	4	4	3	7	13	13	11	32	41	48	42	45	43	-	317	100.00

**TABLE IMP-3 (b): Number of Incident Cancers by Five Year Age Group and Site (ICD-10):
2003-2004 – Females**

% = Relative Proportion of Cancers of All Sites.

Imphal West District

ICD-10	Site	0-4	5-9	10-14	15-19	20-24	25-29	30-34	35-39	40-44	45-49	50-54	55-59	60-64	65-69	70-74	75+	Unkn	Total	%
C00	Lip	-	-	-	-	-	-	-	-	-	-	-	-	-	-	-	-	-	-	-
C01-02	Tongue	-	-	-	-	-	-	-	-	-	-	1	-	-	2	-	1	-	4	1.06
C03-06	Mouth	-	-	-	-	1	-	1	-	1	1	-	-	-	1	3	2	-	10	2.65
C07-8	Salivary Gland	-	-	-	-	-	-	-	-	-	-	-	-	-	-	-	1	1	2	0.53
C09	Tonsil	-	-	-	-	-	-	-	-	-	1	-	-	-	-	-	-	-	1	0.27
C10	Oth. Oropharynx	-	-	-	-	-	-	-	-	-	-	-	-	2	-	-	-	-	2	0.53
C11	Nasopharynx	-	-	-	-	-	-	-	1	2	1	-	-	-	1	-	-	-	5	1.33
C12-13	Hypopharynx	-	-	-	-	-	-	-	-	-	1	1	-	-	-	1	-	-	3	0.80
C14	Pharynx Unspecified	-	-	-	-	-	-	-	-	-	-	-	-	-	-	-	-	-	-	-
C15	Oesophagus	-	-	-	-	-	-	-	1	1	-	5	-	2	1	1	1	-	12	3.18
C16	Stomach	-	-	-	-	-	-	-	2	4	2	1	2	2	1	1	1	-	16	4.24
C17	Small Intestine	-	-	-	-	1	-	-	-	-	-	-	-	-	-	-	-	-	1	0.27
C18	Colon	-	-	-	-	1	-	-	1	-	-	1	-	3	1	1	-	-	8	2.12
C19-20	Rectum	-	-	-	1	-	-	-	1	-	-	-	2	-	-	1	-	-	5	1.33
C21	Anus & Anal Canal	-	-	-	-	-	-	-	-	-	-	1	-	-	-	-	-	-	1	0.27
C22	Liver	-	-	-	-	-	-	1	-	-	3	2	-	1	-	1	-	-	8	2.12
C23-24	Gallbladder etc.	-	-	-	-	1	-	-	-	-	3	1	3	5	2	2	3	-	20	5.31
C25	Pancreas	-	-	-	-	-	-	-	-	-	-	-	-	2	-	-	-	-	2	0.53
C30-31	Nose, Sinuses etc.	-	-	-	-	-	-	-	1	-	-	-	-	-	-	-	-	-	1	0.27
C32	Larynx	-	-	-	-	-	-	-	-	-	-	1	-	1	-	1	-	-	3	0.80
C33-34	Lung etc.	-	-	-	-	1	-	1	3	-	1	4	8	10	10	9	14	-	61	16.18
C37-38	Other Thoracic Organs	-	-	-	-	-	-	-	-	-	-	-	-	-	-	-	-	-	-	-
C40-41	Bone	-	-	1	1	-	1	1	-	-	-	-	-	-	-	-	-	-	4	1.06
C43	Melanoma of Skin	-	-	-	-	-	-	-	-	-	1	-	-	-	-	1	-	-	2	0.53
C44	Other Skin	-	-	-	-	-	-	-	-	-	-	-	-	1	1	-	3	-	5	1.33
C45	Mesothelioma	-	-	-	-	-	-	-	-	-	-	-	-	-	-	-	-	-	-	-
C46	Kaposi Sarcoma	-	-	-	-	-	-	-	-	-	-	-	-	-	-	-	-	-	-	-
C47+C49	Conn. & Soft Tissue	-	-	-	1	-	-	-	-	-	-	-	1	-	-	-	-	-	2	0.53
C50	Breast	-	-	-	-	2	-	5	10	10	7	4	5	3	3	3	2	-	54	14.32
C51	Vulva	-	-	-	-	-	-	-	-	1	-	1	1	-	-	-	2	-	5	1.33
C52	Vagina	-	-	-	-	-	-	-	-	-	-	-	-	-	-	-	-	-	-	-
C53	Cervix Uteri	-	-	-	-	1	2	1	7	-	11	6	10	3	5	5	4	-	55	14.59
C54	Corpus Uteri	-	-	-	-	-	-	-	-	1	-	-	2	-	-	-	-	-	3	0.80
C55	Uterus Unspecified	-	-	-	-	1	-	1	1	-	2	-	-	-	-	-	-	-	5	1.33
C56	Ovary etc.	-	-	-	-	1	-	2	1	2	-	6	-	1	-	-	1	-	14	3.71
C57	Other Female Genital	-	-	-	-	-	-	-	-	-	-	-	-	-	-	-	-	-	-	-
C58	Placenta	-	-	-	-	-	1	-	-	-	-	-	-	-	-	-	-	-	1	0.27
C64	Kidney etc.	1	-	-	-	-	-	-	-	-	-	-	-	2	1	-	-	-	4	1.06
C65	Renal Pelvis	-	-	-	-	-	-	-	-	-	-	-	-	-	-	-	-	-	-	-
C66	Ureter	-	-	-	-	-	-	-	-	-	-	-	-	-	-	-	-	-	-	-
C67	Bladder	-	-	-	-	-	-	-	-	-	-	-	-	-	-	-	-	-	-	-
C68	Uns. Urinary Organs	-	-	-	-	-	-	-	-	-	-	-	-	-	-	-	-	-	-	-
C69	Eye	-	-	1	-	-	-	-	-	-	-	-	-	-	-	-	-	-	1	0.27
C70-72	Brain, Nervous System	-	-	-	-	-	-	-	-	1	-	-	-	-	-	-	-	-	1	0.27
C73	Thyroid	-	-	-	1	2	2	-	1	2	4	1	3	-	2	2	-	-	20	5.31
C74	Adrenal Gland	-	-	-	-	-	-	-	-	-	-	-	-	-	-	-	-	-	-	-
C77	Sec Lymph Nodes	1	-	-	-	-	-	-	-	-	-	-	-	-	-	-	1	-	2	0.53
C78	Sec Resp & Digestive	-	-	-	-	-	-	-	-	-	-	-	-	-	-	-	-	-	-	-
C79	Sec Others	-	-	-	-	-	-	-	-	-	-	-	-	-	-	-	1	-	1	0.27
C81	Hodgkins Disease	-	-	-	-	-	-	-	-	-	-	-	-	-	-	-	-	-	-	-
C82-85,C96	NHL	-	-	-	-	-	-	-	-	-	-	3	-	-	-	-	1	-	4	1.06
C90	Multiple Myeloma	-	-	-	-	-	1	-	-	-	-	-	2	-	-	-	-	-	3	0.80
C91	Lymphoid Leuk.	1	-	-	-	2	-	-	-	-	1	-	-	-	-	-	-	-	4	1.06
C92-94	Myeloid Leukaemia	-	1	-	1	1	-	2	1	-	2	-	1	-	2	1	-	-	12	3.18
C95	Leukaemia Uns	-	-	-	-	-	-	-	-	-	-	-	-	-	-	-	-	-	-	-
O&U	Other and Uns	1	-	-	1	-	-	-	-	-	-	-	2	2	2	1	1	-	10	2.65
	All Sites	4	1	2	6	15	7	15	31	25	41	39	42	40	35	34	39	1	377	100.00

TABLE: IMP-4(a):
Average Annual Age Specific, Crude (CR), Age Adjusted (AAR) (with Standard Error(SE)) and
Truncated (35-64 yrs) (TR) Incidence Rate per 100,000 population: 2003-2004 - Males
Imphal West District

ICD-10	0-4	5-9	10-14	15-19	20-24	25-29	30-34	35-39	40-44	45-49	50-54	55-59	60-64	65-69	70-74	>75	CR	AAR	SE	TR
C00	-	-	-	-	-	-	-	-	-	-	-	-	-	-	-	-	-	-	-	-
C01-02	-	-	-	-	-	-	-	-	3.5	4.3	4.9	7.3	29.0	-	13.9	12.3	1.9	2.7	0.92	7.0
C03-06	-	-	-	-	-	-	-	-	3.5	-	-	-	9.7	11.9	27.9	12.3	1.3	1.8	0.73	1.9
C07-8	-	-	-	-	-	-	-	-	-	-	-	-	-	-	13.9	12.3	0.4	0.5	0.37	-
C09	-	-	-	-	-	-	-	-	-	-	-	-	19.3	11.9	13.9	12.3	1.1	1.7	0.75	2.5
C10	-	-	-	-	-	-	-	-	-	-	4.9	-	9.7	-	-	-	0.4	0.6	0.46	2.0
C11	-	-	-	-	-	-	-	2.9	-	8.6	14.8	21.9	38.6	35.8	27.9	-	3.9	5.5	1.32	12.4
C12-13	-	-	-	-	-	-	-	-	3.5	4.3	-	-	38.6	47.7	-	-	2.2	3.4	1.10	6.5
C14	-	-	-	-	-	-	-	-	-	-	-	-	-	-	13.9	12.3	0.4	0.5	0.37	-
C15	-	-	-	-	-	-	2.7	-	-	-	29.6	58.5	38.6	11.9	27.9	12.3	5.0	6.7	1.42	17.3
C16	-	-	-	-	-	-	-	-	3.5	-	4.9	7.3	86.9	47.7	55.7	73.5	5.6	8.2	1.65	13.6
C17	-	-	-	-	-	-	-	-	3.5	-	-	-	19.3	-	-	-	0.6	1.0	0.59	3.2
C18	-	-	-	-	-	-	-	2.9	-	4.3	4.9	21.9	9.7	-	41.8	36.8	2.8	3.5	0.99	6.3
C19-20	-	-	-	-	2.0	-	-	2.9	-	4.3	-	7.3	-	23.9	27.9	-	1.7	2.2	0.79	2.3
C21	-	-	-	-	-	-	-	-	-	-	-	-	-	-	13.9	-	0.2	0.3	0.28	-
C22	-	-	-	-	-	-	-	5.9	-	-	-	-	9.7	-	-	24.5	1.1	1.2	0.58	2.4
C23-24	-	-	-	-	-	-	-	-	-	4.3	-	-	-	11.9	27.9	-	0.9	1.2	0.59	0.8
C25	-	-	-	-	-	-	-	-	3.5	-	-	-	-	-	-	-	0.2	0.2	0.21	0.7
C30-31	-	-	-	-	-	-	-	-	3.5	-	-	7.3	-	-	-	-	0.4	0.5	0.36	1.6
C32	-	-	-	-	-	-	-	2.9	7.1	4.3	4.9	7.3	-	11.9	27.9	24.5	2.4	2.8	0.86	4.5
C33-34	-	-	-	-	-	-	-	2.9	-	8.6	34.5	65.8	67.6	155.1	195.1	147.0	14.1	19.2	2.42	25.0
C37-38	-	-	-	-	-	-	-	-	-	-	4.9	-	-	-	-	-	0.2	0.2	0.25	0.8
C40-41	-	2.3	2.0	-	-	-	2.7	-	3.5	-	-	7.3	-	-	-	-	1.1	1.1	0.49	1.6
C43	-	-	-	-	-	-	-	-	-	-	-	7.3	-	-	-	-	0.2	0.3	0.29	0.9
C44	-	-	-	-	-	-	-	-	-	-	9.9	7.3	9.7	-	-	36.8	1.5	1.9	0.73	3.8
C45	-	-	-	-	-	-	-	-	-	-	-	-	-	-	-	-	-	-	-	-
C46	-	-	-	-	-	-	-	-	-	-	-	-	-	-	-	-	-	-	-	-
C47+C49	-	-	-	-	-	-	-	-	-	-	4.9	-	-	-	-	-	0.2	0.2	0.25	0.8
C50	-	-	-	-	-	-	-	-	-	-	4.9	7.3	-	-	-	-	0.4	0.5	0.38	1.7
C60	-	-	-	-	-	-	-	-	-	4.3	4.9	-	-	-	13.9	24.5	1.1	1.3	0.57	1.6
C61	-	-	-	-	-	-	-	-	-	-	-	-	-	11.9	13.9	24.5	0.9	1.1	0.57	-
C62	2.6	-	-	-	-	-	-	2.9	-	-	-	-	-	11.9	-	-	0.6	0.8	0.51	0.6
C63	-	-	-	-	-	-	-	-	-	-	-	-	-	-	-	-	-	-	-	-
C64	-	-	-	-	-	-	-	-	-	-	-	7.3	-	23.9	-	-	0.6	1.0	0.58	0.9
C65	-	-	-	-	-	-	-	-	-	-	-	-	-	-	-	-	-	-	-	-
C66	-	-	-	-	-	-	-	-	-	-	-	-	-	-	-	-	-	-	-	-
C67	-	-	-	-	-	-	-	-	3.5	-	-	14.6	9.7	-	13.9	-	1.1	1.5	0.67	3.8
C68	-	-	-	-	-	-	-	-	-	-	-	-	-	-	-	-	-	-	-	-
C69	2.6	-	-	-	-	-	-	-	-	-	-	-	-	-	-	-	0.2	0.3	0.31	-
C70-72	-	-	-	-	-	2.3	-	-	3.5	-	-	-	-	-	-	-	0.4	0.4	0.28	0.7
C73	-	-	-	-	2.0	-	-	-	-	-	-	-	19.3	-	-	-	0.6	0.9	0.57	2.5
C74	-	-	-	-	-	-	-	2.9	-	-	-	-	9.7	-	-	-	0.4	0.6	0.42	1.8
C77	-	-	-	-	-	-	-	-	-	-	-	-	-	-	13.9	-	0.2	0.3	0.28	-
C78	-	-	-	-	-	-	-	-	-	-	-	-	-	-	-	-	-	-	-	-
C79	-	-	-	-	-	-	-	-	-	-	-	-	-	11.9	-	12.3	0.4	0.6	0.43	-
C81	-	-	-	-	-	-	-	-	-	-	4.9	-	9.7	-	-	-	0.4	0.6	0.46	2.0
C82-85,C96	-	2.3	-	2.1	-	-	13.3	5.9	-	-	4.9	7.3	-	23.9	13.9	24.5	3.5	3.6	0.94	2.9
C90	-	-	-	-	-	-	-	-	-	-	4.9	7.3	-	23.9	-	12.3	1.1	1.5	0.68	1.7
C91	7.8	2.3	2.0	2.1	2.0	-	-	-	-	-	-	-	-	-	13.9	-	1.7	2.0	0.72	-
C92-94	-	-	-	4.2	2.0	4.7	-	2.9	-	-	4.9	21.9	-	11.9	-	-	2.4	2.6	0.80	4.2
C95	2.6	-	-	-	-	-	-	-	-	-	-	-	-	-	-	-	0.2	0.3	0.31	-
O&U	-	-	-	-	-	-	-	2.9	3.5	-	4.9	7.3	29.0	11.9	13.9	12.3	2.2	3.0	0.97	6.7
All	15.5	7.0	4.0	8.4	8.1	7.0	18.6	38.1	45.9	47.0	157.7	299.9	463.6	501.1	627.0	526.8	68.6	90.4	5.20	149.3

TABLE: IMP-4(b):
Average Annual Age Specific, Crude (CR), Age Adjusted (AAR) (with Standard Error(SE)) and
Truncated (35-64 yrs) (TR) Incidence Rate per 100,000 population: 2003-2004 - Females
Imphal West District

ICD-10	0-4	5-9	10-14	15-19	20-24	25-29	30-34	35-39	40-44	45-49	50-54	55-59	60-64	65-69	70-74	>75	CR	AAR	SE	TR
C00	-	-	-	-	-	-	-	-	-	-	-	-	-	-	-	-	-	-	-	-
C01-02	-	-	-	-	-	-	-	-	-	-	5.2	-	-	22.2	-	10.0	0.9	1.1	0.58	0.8
C03-06	-	-	-	-	2.0	-	2.6	-	3.5	4.2	-	-	-	11.1	37.5	20.0	2.1	2.3	0.73	1.5
C07-8	-	-	-	-	-	-	-	-	-	-	-	-	-	-	-	10.0	0.4	0.2	0.39	-
C09	-	-	-	-	-	-	-	-	-	4.2	-	-	-	-	-	-	0.2	0.3	0.25	0.8
C10	-	-	-	-	-	-	-	-	-	-	-	-	17.1	-	-	-	0.4	0.7	0.48	2.2
C11	-	-	-	-	-	-	-	2.9	7.1	4.2	-	-	-	11.1	-	-	1.1	1.2	0.54	2.8
C12-13	-	-	-	-	-	-	-	-	-	4.2	5.2	-	-	-	12.5	-	0.6	0.8	0.44	1.7
C14	-	-	-	-	-	-	-	-	-	-	-	-	-	-	-	-	-	-	-	-
C15	-	-	-	-	-	-	-	2.9	3.5	-	26.2	-	17.1	11.1	12.5	10.0	2.6	3.2	0.93	7.7
C16	-	-	-	-	-	-	-	5.8	14.2	8.5	5.2	15.8	17.1	11.1	12.5	10.0	3.4	4.1	1.04	10.6
C17	-	-	-	-	2.0	-	-	-	-	-	-	-	-	-	-	-	0.2	0.2	0.16	-
C18	-	-	-	-	2.0	-	-	2.9	-	-	5.2	-	25.7	11.1	12.5	-	1.7	2.2	0.81	4.7
C19-20	-	-	-	2.0	-	-	-	2.9	-	-	-	15.8	-	-	12.5	-	1.1	1.2	0.57	2.6
C21	-	-	-	-	-	-	-	-	-	-	5.2	-	-	-	-	-	0.2	0.3	0.26	0.8
C22	-	-	-	-	-	-	2.6	-	-	12.7	10.5	-	8.6	-	12.5	-	1.7	2.0	0.73	5.3
C23-24	-	-	-	-	2.0	-	-	-	-	12.7	5.2	23.7	42.8	22.2	25.0	30.0	4.3	5.6	1.28	11.9
C25	-	-	-	-	-	-	-	-	-	-	-	-	17.1	-	-	-	0.4	0.7	0.48	2.2
C30-31	-	-	-	-	-	-	-	2.9	-	-	-	-	-	-	-	-	0.2	0.2	0.17	0.6
C32	-	-	-	-	-	-	-	-	-	-	5.2	-	8.6	-	12.5	-	0.6	0.9	0.50	2.0
C33-34	-	-	-	-	2.0	-	2.6	8.7	-	4.2	21.0	63.3	85.7	111.2	112.4	139.9	13.1	16.5	2.16	25.1
C37-38	-	-	-	-	-	-	-	-	-	-	-	-	-	-	-	-	-	-	-	-
C40-41	-	-	2.1	2.0	-	2.2	2.6	-	-	-	-	-	-	-	-	-	0.9	0.7	0.35	-
C43	-	-	-	-	-	-	-	-	-	4.2	-	-	-	-	12.5	-	0.4	0.5	0.36	0.8
C44	-	-	-	-	-	-	-	-	-	-	-	-	8.6	11.1	-	30.0	1.1	1.3	0.59	1.1
C45	-	-	-	-	-	-	-	-	-	-	-	-	-	-	-	-	-	-	-	-
C46	-	-	-	-	-	-	-	-	-	-	-	-	-	-	-	-	-	-	-	-
C47+C49	-	-	-	2.0	-	-	-	-	-	-	-	7.9	-	-	-	-	0.4	0.5	0.37	1.0
C50	-	-	-	-	3.9	-	12.9	28.9	35.4	29.7	21.0	39.6	25.7	33.4	37.5	20.0	11.6	12.5	1.76	30.0
C51	-	-	-	-	-	-	-	-	3.5	-	5.2	7.9	-	-	-	20.0	1.1	1.2	0.54	2.6
C52	-	-	-	-	-	-	-	-	-	-	-	-	-	-	-	-	-	-	-	-
C53	-	-	-	-	2.0	4.4	2.6	20.2	-	46.7	31.5	79.1	25.7	55.6	62.4	40.0	11.8	14.2	1.96	31.6
C54	-	-	-	-	-	-	-	-	3.5	-	-	15.8	-	-	-	-	0.6	0.8	0.50	2.7
C55	-	-	-	-	2.0	-	2.6	2.9	-	8.5	-	-	-	-	-	-	1.1	1.0	0.46	2.2
C56	-	-	-	-	2.0	-	5.1	2.9	7.1	-	31.5	-	8.6	-	10.0	-	3.0	3.2	0.87	8.1
C57	-	-	-	-	-	-	-	-	-	-	-	-	-	-	-	-	-	-	-	-
C58	-	-	-	-	-	2.2	-	-	-	-	-	-	-	-	-	-	0.2	0.2	0.17	-
C64	2.8	-	-	-	-	-	-	-	-	-	-	-	17.1	11.1	-	-	0.9	1.3	0.67	2.2
C65	-	-	-	-	-	-	-	-	-	-	-	-	-	-	-	-	-	-	-	-
C66	-	-	-	-	-	-	-	-	-	-	-	-	-	-	-	-	-	-	-	-
C67	-	-	-	-	-	-	-	-	-	-	-	-	-	-	-	-	-	-	-	-
C68	-	-	-	-	-	-	-	-	-	-	-	-	-	-	-	-	-	-	-	-
C69	-	-	2.1	-	-	-	-	-	-	-	-	-	-	-	-	-	0.2	0.2	0.19	-
C70-72	-	-	-	-	-	-	-	-	3.5	-	-	-	-	-	-	-	0.2	0.2	0.21	0.7
C73	-	-	-	2.0	3.9	4.4	-	2.9	7.1	17.0	5.2	23.7	-	22.2	25.0	-	4.3	4.8	1.11	9.1
C74	-	-	-	-	-	-	-	-	-	-	-	-	-	-	-	-	-	-	-	-
C77	2.8	-	-	-	-	-	-	-	-	-	-	-	-	-	-	10.0	0.4	0.5	0.39	-
C78	-	-	-	-	-	-	-	-	-	-	-	-	-	-	-	-	-	-	-	-
C79	-	-	-	-	-	-	-	-	-	-	-	-	-	-	-	10.0	0.2	0.2	0.20	-
C81	-	-	-	-	-	-	-	-	-	-	-	-	-	-	-	-	-	-	-	-
C82-85,C96	-	-	-	-	-	-	-	-	-	-	15.7	-	-	-	-	10.0	0.9	1.0	0.50	2.5
C90	-	-	-	-	-	2.2	-	-	-	-	-	15.8	-	-	-	-	0.6	0.8	0.48	2.0
C91	2.8	-	-	-	3.9	-	-	-	-	4.2	-	-	-	-	-	-	0.9	0.9	0.47	0.8
C92-94	-	2.5	-	2.0	2.0	-	5.1	2.9	-	8.5	-	7.9	-	22.2	12.5	-	2.6	2.8	0.84	3.2
C95	-	-	-	-	-	-	-	-	-	-	-	-	-	-	-	-	-	-	-	-
O&U	2.8	-	-	2.0	-	-	-	-	-	-	-	15.8	17.1	22.2	12.5	10.0	2.1	2.9	0.95	4.3
All	11.0	2.5	4.1	12.2	29.3	15.3	38.6	89.5	88.6	174.1	204.6	332.4	342.8	389.1	424.5	389.8	80.7	95.6	5.06	188.3

**TABLE: IMP-5(a): Number (#) and Proportion (%) of Cancers by Site (ICD-10) and Method of Diagnosis: 2003-2004 - Males
Imphal West District**

ICD-10	Site	Microscopic		X-Ray / imaging		Clinical		Others		D.C.O		Total	
		#	%	#	%	#	%	#	%	#	%	#	%
C00	Lip	-	-	-	-	-	-	-	-	-	-	-	-
C01-02	Tongue	8	88.9	-	-	-	-	-	-	1	11.1	9	100.0
C03-06	Mouth	6	100.0	-	-	-	-	-	-	-	-	6	100.0
C07-8	Salivary Gland	2	100.0	-	-	-	-	-	-	-	-	2	100.0
C09	Tonsil	5	100.0	-	-	-	-	-	-	-	-	5	100.0
C10	Oth. Oropharynx	2	100.0	-	-	-	-	-	-	-	-	2	100.0
C11	Nasopharynx	18	100.0	-	-	-	-	-	-	-	-	18	100.0
C12-13	Hypopharynx	10	100.0	-	-	-	-	-	-	-	-	10	100.0
C14	Pharynx Unspecified	1	50.0	-	-	-	-	-	-	1	50.0	2	100.0
C15	Oesophagus	22	95.7	-	-	-	-	1	4.3	-	-	23	100.0
C16	Stomach	23	88.5	-	-	-	-	3	11.5	-	-	26	100.0
C17	Small Intestine	3	100.0	-	-	-	-	-	-	-	-	3	100.0
C18	Colon	13	100.0	-	-	-	-	-	-	-	-	13	100.0
C19-20	Rectum	8	100.0	-	-	-	-	-	-	-	-	8	100.0
C21	Anus & Anal Canal	1	100.0	-	-	-	-	-	-	-	-	1	100.0
C22	Liver	4	80.0	1	20.0	-	-	-	-	-	-	5	100.0
C23-24	Gallbladder etc.	3	75.0	-	-	-	-	1	25.0	-	-	4	100.0
C25	Pancreas	1	100.0	-	-	-	-	-	-	-	-	1	100.0
C30-31	Nose, Sinuses etc.	2	100.0	-	-	-	-	-	-	-	-	2	100.0
C32	Larynx	10	90.9	-	-	-	-	-	-	1	9.1	11	100.0
C33-34	Lung etc.	56	86.2	7	10.8	-	-	1	1.5	1	1.5	65	100.0
C37-38	Other Thoracic Organs	1	100.0	-	-	-	-	-	-	-	-	1	100.0
C40-41	Bone	4	80.0	1	20.0	-	-	-	-	-	-	5	100.0
C43	Melanoma of Skin	1	100.0	-	-	-	-	-	-	-	-	1	100.0
C44	Other Skin	7	100.0	-	-	-	-	-	-	-	-	7	100.0
C45	Mesothelioma	-	-	-	-	-	-	-	-	-	-	-	-
C46	Kaposi Sarcoma	-	-	-	-	-	-	-	-	-	-	-	-
C47+C49	Conn. & Soft Tissue	1	100.0	-	-	-	-	-	-	-	-	1	100.0
C50	Breast	2	100.0	-	-	-	-	-	-	-	-	2	100.0
C60	Penis	5	100.0	-	-	-	-	-	-	-	-	5	100.0
C61	Prostate	3	75.0	-	-	-	-	1	25.0	-	-	4	100.0
C62	Testis	3	100.0	-	-	-	-	-	-	-	-	3	100.0
C63	Other Male Genital	-	-	-	-	-	-	-	-	-	-	-	-
C64	Kidney etc.	2	66.7	1	33.3	-	-	-	-	-	-	3	100.0
C65	Renal Pelvis	-	-	-	-	-	-	-	-	-	-	-	-
C66	Ureter	-	-	-	-	-	-	-	-	-	-	-	-
C67	Bladder	5	100.0	-	-	-	-	-	-	-	-	5	100.0
C68	Uns. Urinary Organs	-	-	-	-	-	-	-	-	-	-	-	-
C69	Eye	-	-	-	-	-	-	1	100.0	-	-	1	100.0
C70-72	Brain, Nervous System	2	100.0	-	-	-	-	-	-	-	-	2	100.0
C73	Thyroid	3	100.0	-	-	-	-	-	-	-	-	3	100.0
C74	Adrenal Gland	2	100.0	-	-	-	-	-	-	-	-	2	100.0
C77	Sec Lymph Nodes	-	-	-	-	-	-	-	-	1	100.0	1	100.0
C78	Sec Resp & Digestive	-	-	-	-	-	-	-	-	-	-	-	-
C79	Sec Others	2	100.0	-	-	-	-	-	-	-	-	2	100.0
C81	Hodgkins Disease	2	100.0	-	-	-	-	-	-	-	-	2	100.0
C82-85,C96	NHL	16	100.0	-	-	-	-	-	-	-	-	16	100.0
C90	Multiple Myeloma	5	100.0	-	-	-	-	-	-	-	-	5	100.0
C91	Lymphoid Leuk.	6	75.0	-	-	-	-	-	-	2	25.0	8	100.0
C92-94	Myeloid Leukaemia	9	81.8	-	-	-	-	-	-	2	18.2	11	100.0
C95	Leukaemia Uns	1	100.0	-	-	-	-	-	-	-	-	1	100.0
O&U	Other and Uns	8	80.0	1	10.0	1	10.0	-	-	-	-	10	100.0
	All Sites	288	90.9	11	3.5	1	0.3	8	2.5	9	2.8	317	100.0

TABLE: IMP-5(b): Number (#) and Proportion (%) of Cancers by Site (ICD-10) and Method of Diagnosis : 2003-2004 - Females
Imphal West District

ICD-10	Site	Microscopic		X-Ray / imaging		Clinical		Others		D.C.O		Total	
		#	%	#	%	#	%	#	%	#	%	#	%
C00	Lip	-	-	-	-	-	-	-	-	-	-	-	-
C01-02	Tongue	4	100.0	-	-	-	-	-	-	-	-	4	100.0
C03-06	Mouth	10	100.0	-	-	-	-	-	-	-	-	10	100.0
C07-8	Salivary Gland	2	100.0	-	-	-	-	-	-	-	-	2	100.0
C09	Tonsil	1	100.0	-	-	-	-	-	-	-	-	1	100.0
C10	Oth. Oropharynx	2	100.0	-	-	-	-	-	-	-	-	2	100.0
C11	Nasopharynx	5	100.0	-	-	-	-	-	-	-	-	5	100.0
C12-13	Hypopharynx	3	100.0	-	-	-	-	-	-	-	-	3	100.0
C14	Pharynx Unspecified	-	-	-	-	-	-	-	-	-	-	-	-
C15	Oesophagus	12	100.0	-	-	-	-	-	-	-	-	12	100.0
C16	Stomach	16	100.0	-	-	-	-	-	-	-	-	16	100.0
C17	Small Intestine	1	100.0	-	-	-	-	-	-	-	-	1	100.0
C18	Colon	8	100.0	-	-	-	-	-	-	-	-	8	100.0
C19-20	Rectum	5	100.0	-	-	-	-	-	-	-	-	5	100.0
C21	Anus & Anal Canal	1	100.0	-	-	-	-	-	-	-	-	1	100.0
C22	Liver	8	100.0	-	-	-	-	-	-	-	-	8	100.0
C23-24	Gallbladder etc.	19	95.0	-	-	-	-	-	-	1	5.0	20	100.0
C25	Pancreas	2	100.0	-	-	-	-	-	-	-	-	2	100.0
C30-31	Nose, Sinuses etc.	1	100.0	-	-	-	-	-	-	-	-	1	100.0
C32	Larynx	3	100.0	-	-	-	-	-	-	-	-	3	100.0
C33-34	Lung etc.	56	91.8	4	6.6	-	-	-	-	1	1.6	61	100.0
C37-38	Other Thoracic Organs	-	-	-	-	-	-	-	-	-	-	-	-
C40-41	Bone	4	100.0	-	-	-	-	-	-	-	-	4	100.0
C43	Melanoma of Skin	2	100.0	-	-	-	-	-	-	-	-	2	100.0
C44	Other Skin	5	100.0	-	-	-	-	-	-	-	-	5	100.0
C45	Mesothelioma	-	-	-	-	-	-	-	-	-	-	-	-
C46	Kaposi Sarcoma	-	-	-	-	-	-	-	-	-	-	-	-
C47+C49	Conn. & Soft Tissue	2	100.0	-	-	-	-	-	-	-	-	2	100.0
C50	Breast	54	100.0	-	-	-	-	-	-	-	-	54	100.0
C51	Vulva	5	100.0	-	-	-	-	-	-	-	-	5	100.0
C52	Vagina	-	-	-	-	-	-	-	-	-	-	-	-
C53	Cervix Uteri	55	100.0	-	-	-	-	-	-	-	-	55	100.0
C54	Corpus Uteri	3	100.0	-	-	-	-	-	-	-	-	3	100.0
C55	Uterus Unspecified	4	80.0	-	-	-	-	1	20.0	-	-	5	100.0
C56	Ovary etc.	14	100.0	-	-	-	-	-	-	-	-	14	100.0
C57	Other Female Genital	-	-	-	-	-	-	-	-	-	-	-	-
C58	Placenta	1	100.0	-	-	-	-	-	-	-	-	1	100.0
C64	Kidney etc.	4	100.0	-	-	-	-	-	-	-	-	4	100.0
C65	Renal Pelvis	-	-	-	-	-	-	-	-	-	-	-	-
C66	Ureter	-	-	-	-	-	-	-	-	-	-	-	-
C67	Bladder	-	-	-	-	-	-	-	-	-	-	-	-
C68	Uns.Urinary Organs	-	-	-	-	-	-	-	-	-	-	-	-
C69	Eye	1	100.0	-	-	-	-	-	-	-	-	1	100.0
C70-72	Brain, Nervous System	1	100.0	-	-	-	-	-	-	-	-	1	100.0
C73	Thyroid	20	100.0	-	-	-	-	-	-	-	-	20	100.0
C74	Adrenal Gland	-	-	-	-	-	-	-	-	-	-	-	-
C77	Sec Lymph Nodes	2	100.0	-	-	-	-	-	-	-	-	2	100.0
C78	Sec Resp & Digestive	-	-	-	-	-	-	-	-	-	-	-	-
C79	Sec Others	1	100.0	-	-	-	-	-	-	-	-	1	100.0
C81	Hodgkins Disease	-	-	-	-	-	-	-	-	-	-	-	-
C82-85,C96	NHL	4	100.0	-	-	-	-	-	-	-	-	4	100.0
C90	Multiple Myeloma	3	100.0	-	-	-	-	-	-	-	-	3	100.0
C91	Lymphoid Leuk.	3	75.0	-	-	-	-	-	-	1	25.0	4	100.0
C92-94	Myeloid Leukaemia	12	100.0	-	-	-	-	-	-	-	-	12	100.0
C95	Leukaemia Uns	-	-	-	-	-	-	-	-	-	-	-	-
O&U	Other and Uns	8	80.0	-	-	1	10.0	-	-	1	10.0	10	100.0
	All Sites	367	97.3	4	1.1	1	0.3	1	0.3	4	1.1	377	100.0

TABLE: IMP-6(a): Number (#) and Proportion (%) of Cancers by Site (ICD-9) and Detailed Microscopic Diagnosis, 2003-2004 - Males : Imphal West District

ICD-10	Site	Pri. Hist		Sec. Hist		Cytology		Blood Film		Bone Marrow		Others		Total	
		#	%	#	%	#	%	#	%	#	%	#	%	#	%
C00	Lip	-	-	-	-	-	-	-	-	-	-	-	-	-	-
C01-02	Tongue	7	77.8	-	-	1	11.1	-	-	-	-	1	11.1	9	100.0
C03-06	Mouth	4	66.7	-	-	2	33.3	-	-	-	-	-	-	6	100.0
C07-8	Salivary Gland	-	-	-	-	2	100.0	-	-	-	-	-	-	2	100.0
C09	Tonsil	2	40.0	-	-	3	60.0	-	-	-	-	-	-	5	100.0
C10	Oth. Oropharynx	2	100.0	-	-	-	-	-	-	-	-	-	-	2	100.0
C11	Nasopharynx	6	33.3	-	-	12	66.7	-	-	-	-	-	-	18	100.0
C12-13	Hypopharynx	6	60.0	-	-	4	40.0	-	-	-	-	-	-	10	100.0
C14	Pharynx Unspecified	1	50.0	-	-	-	-	-	-	-	-	1	50.0	2	100.0
C15	Oesophagus	16	69.6	1	4.3	5	21.7	-	-	-	-	1	4.3	23	100.0
C16	Stomach	17	65.4	-	-	6	23.1	-	-	-	-	3	11.5	26	100.0
C17	Small Intestine	2	66.7	-	-	1	33.3	-	-	-	-	-	-	3	100.0
C18	Colon	6	46.2	-	-	7	53.8	-	-	-	-	-	-	13	100.0
C19-20	Rectum	7	87.5	1	12.5	-	-	-	-	-	-	-	-	8	100.0
C21	Anus & Anal Canal	1	100.0	-	-	-	-	-	-	-	-	-	-	1	100.0
C22	Liver	1	20.0	-	-	3	60.0	-	-	-	-	1	20.0	5	100.0
C23-24	Gallbladder etc.	1	25.0	-	-	2	50.0	-	-	-	-	1	25.0	4	100.0
C25	Pancreas	-	-	-	-	1	100.0	-	-	-	-	-	-	1	100.0
C30-31	Nose, Sinuses etc.	2	100.0	-	-	-	-	-	-	-	-	-	-	2	100.0
C32	Larynx	4	36.4	-	-	6	54.5	-	-	-	-	1	9.1	11	100.0
C33-34	Lung etc.	1	1.5	2	3.1	53	81.5	-	-	-	-	9	13.8	65	100.0
C37-38	Other Thoracic Organs	1	100.0	-	-	-	-	-	-	-	-	-	-	1	100.0
C40-41	Bone	3	60.0	-	-	1	20.0	-	-	-	-	1	20.0	5	100.0
C43	Melanoma of Skin	1	100.0	-	-	-	-	-	-	-	-	-	-	1	100.0
C44	Other Skin	3	42.9	-	-	4	57.1	-	-	-	-	-	-	7	100.0
C45	Mesothelioma	-	-	-	-	-	-	-	-	-	-	-	-	-	-
C46	Kaposi Sarcoma	-	-	-	-	-	-	-	-	-	-	-	-	-	-
C47+C49	Conn. & Soft Tissue	1	100.0	-	-	-	-	-	-	-	-	-	-	1	100.0
C50	Breast	2	100.0	-	-	-	-	-	-	-	-	-	-	2	100.0
C60	Penis	5	100.0	-	-	-	-	-	-	-	-	-	-	5	100.0
C61	Prostate	3	75.0	-	-	-	-	-	-	-	-	1	25.0	4	100.0
C62	Testis	2	66.7	-	-	1	33.3	-	-	-	-	-	-	3	100.0
C63	Other Male Genital	-	-	-	-	-	-	-	-	-	-	-	-	-	-
C64	Kidney etc.	1	33.3	-	-	1	33.3	-	-	-	-	1	33.3	3	100.0
C65	Renal Pelvis	-	-	-	-	-	-	-	-	-	-	-	-	-	-
C66	Ureter	-	-	-	-	-	-	-	-	-	-	-	-	-	-
C67	Bladder	4	80.0	-	-	1	20.0	-	-	-	-	-	-	5	100.0
C68	Uns. Urinary Organs	-	-	-	-	-	-	-	-	-	-	-	-	-	-
C69	Eye	-	-	-	-	-	-	-	-	-	-	1	100.0	1	100.0
C70-72	Brain, Nervous System	1	50.0	-	-	1	50.0	-	-	-	-	-	-	2	100.0
C73	Thyroid	1	33.3	-	-	2	66.7	-	-	-	-	-	-	3	100.0
C74	Adrenal Gland	-	-	-	-	2	100.0	-	-	-	-	-	-	2	100.0
C77	Sec Lymph Nodes	-	-	-	-	-	-	-	-	-	-	1	100.0	1	100.0
C78	Sec Resp & Digestive	-	-	-	-	-	-	-	-	-	-	-	-	-	-
C79	Sec Others	-	-	1	50.0	1	50.0	-	-	-	-	-	-	2	100.0
C81	Hodgkins Disease	-	-	-	-	2	100.0	-	-	-	-	-	-	2	100.0
C82-85,C96	NHL	4	25.0	-	-	12	75.0	-	-	-	-	-	-	16	100.0
C90	Multiple Myeloma	1	20.0	-	-	-	-	-	-	4	80.0	-	-	5	100.0
C91	Lymphoid Leuk.	-	-	-	-	1	12.5	-	-	5	62.5	2	25.0	8	100.0
C92-94	Myeloid Leukaemia	-	-	-	-	-	-	-	-	9	81.8	2	18.2	11	100.0
C95	Leukaemia Uns	-	-	-	-	-	-	-	-	1	100.0	-	-	1	100.0
O&U	Other and Uns	-	-	-	-	8	80.0	-	-	-	-	2	20.0	10	100.0
	All Sites	119	37.5	5	1.6	145	45.7	-	-	19	6.0	29	9.1	317	100.0

TABLE: IMP-6(b): Number (#) and Proportion (%) of Cancers by Site (ICD-9) and Detailed Microscopic Diagnosis, 2003-2004 - Females : Imphal West District

ICD-10	Site	Pri. Hist		Sec. Hist		Cytology		Blood Film		Bone Marrow		Others		Total	
		#	%	#	%	#	%	#	%	#	%	#	%	#	%
C00	Lip	-	-	-	-	-	-	-	-	-	-	-	-	-	-
C01-02	Tongue	2	50.0	-	-	2	50.0	-	-	-	-	-	-	4	100.0
C03-06	Mouth	7	70.0	-	-	3	30.0	-	-	-	-	-	-	10	100.0
C07-8	Salivary Gland	2	100.0	-	-	-	-	-	-	-	-	-	-	2	100.0
C09	Tonsil	1	100.0	-	-	-	-	-	-	-	-	-	-	1	100.0
C10	Oth. Oropharynx	2	100.0	-	-	-	-	-	-	-	-	-	-	2	100.0
C11	Nasopharynx	4	80.0	-	-	1	20.0	-	-	-	-	-	-	5	100.0
C12-13	Hypopharynx	3	100.0	-	-	-	-	-	-	-	-	-	-	3	100.0
C14	Pharynx Unspecified	-	-	-	-	-	-	-	-	-	-	-	-	-	-
C15	Oesophagus	11	91.7	-	-	1	8.3	-	-	-	-	-	-	12	100.0
C16	Stomach	9	56.3	-	-	7	43.8	-	-	-	-	-	-	16	100.0
C17	Small Intestine	1	100.0	-	-	-	-	-	-	-	-	-	-	1	100.0
C18	Colon	5	62.5	-	-	3	37.5	-	-	-	-	-	-	8	100.0
C19-20	Rectum	4	80.0	-	-	1	20.0	-	-	-	-	-	-	5	100.0
C21	Anus & Anal Canal	1	100.0	-	-	-	-	-	-	-	-	-	-	1	100.0
C22	Liver	1	12.5	-	-	7	87.5	-	-	-	-	-	-	8	100.0
C23-24	Gallbladder etc.	10	50.0	-	-	9	45.0	-	-	-	-	1	5.0	20	100.0
C25	Pancreas	2	100.0	-	-	-	-	-	-	-	-	-	-	2	100.0
C30-31	Nose, Sinuses etc.	1	100.0	-	-	-	-	-	-	-	-	-	-	1	100.0
C32	Larynx	3	100.0	-	-	-	-	-	-	-	-	-	-	3	100.0
C33-34	Lung etc.	3	4.9	-	-	53	86.9	-	-	-	-	5	8.2	61	100.0
C37-38	Other Thoracic Organs	-	-	-	-	-	-	-	-	-	-	-	-	-	-
C40-41	Bone	2	50.0	-	-	2	50.0	-	-	-	-	-	-	4	100.0
C43	Melanoma of Skin	1	50.0	-	-	1	50.0	-	-	-	-	-	-	2	100.0
C44	Other Skin	5	100.0	-	-	-	-	-	-	-	-	-	-	5	100.0
C45	Mesothelioma	-	-	-	-	-	-	-	-	-	-	-	-	-	-
C46	Kaposi Sarcoma	-	-	-	-	-	-	-	-	-	-	-	-	-	-
C47+C49	Conn. & Soft Tissue	2	100.0	-	-	-	-	-	-	-	-	-	-	2	100.0
C50	Breast	16	29.6	-	-	38	70.4	-	-	-	-	-	-	54	100.0
C51	Vulva	5	100.0	-	-	-	-	-	-	-	-	-	-	5	100.0
C52	Vagina	-	-	-	-	-	-	-	-	-	-	-	-	-	-
C53	Cervix Uteri	51	92.7	-	-	4	7.3	-	-	-	-	-	-	55	100.0
C54	Corpus Uteri	2	66.7	-	-	1	33.3	-	-	-	-	-	-	3	100.0
C55	Uterus Unspecified	3	60.0	-	-	1	20.0	-	-	-	-	1	20.0	5	100.0
C56	Ovary etc.	13	92.9	-	-	1	7.1	-	-	-	-	-	-	14	100.0
C57	Other Female Genital	-	-	-	-	-	-	-	-	-	-	-	-	-	-
C58	Placenta	1	100.0	-	-	-	-	-	-	-	-	-	-	1	100.0
C64	Kidney etc.	1	25.0	-	-	3	75.0	-	-	-	-	-	-	4	100.0
C65	Renal Pelvis	-	-	-	-	-	-	-	-	-	-	-	-	-	-
C66	Ureter	-	-	-	-	-	-	-	-	-	-	-	-	-	-
C67	Bladder	-	-	-	-	-	-	-	-	-	-	-	-	-	-
C68	Uns.Urinary Organs	-	-	-	-	-	-	-	-	-	-	-	-	-	-
C69	Eye	1	100.0	-	-	-	-	-	-	-	-	-	-	1	100.0
C70-72	Brain, Nervous System	1	100.0	-	-	-	-	-	-	-	-	-	-	1	100.0
C73	Thyroid	4	20.0	-	-	16	80.0	-	-	-	-	-	-	20	100.0
C74	Adrenal Gland	-	-	-	-	-	-	-	-	-	-	-	-	-	-
C77	Sec Lymph Nodes	-	-	-	-	2	100.0	-	-	-	-	-	-	2	100.0
C78	Sec Resp & Digestive	-	-	-	-	-	-	-	-	-	-	-	-	-	-
C79	Sec Others	-	-	-	-	1	100.0	-	-	-	-	-	-	1	100.0
C81	Hodgkins Disease	-	-	-	-	-	-	-	-	-	-	-	-	-	-
C82-85,C96	NHL	1	25.0	-	-	3	75.0	-	-	-	-	-	-	4	100.0
C90	Multiple Myeloma	-	-	-	-	-	-	-	-	3	100.0	-	-	3	100.0
C91	Lymphoid Leuk.	-	-	-	-	-	-	-	-	3	75.0	1	25.0	4	100.0
C92-94	Myeloid Leukaemia	-	-	-	-	-	-	-	-	12	100.0	-	-	12	100.0
C95	Leukaemia Uns	-	-	-	-	-	-	-	-	-	-	-	-	-	-
O&U	Other and Uns	2	20.0	-	-	6	60.0	-	-	-	-	2	20.0	10	100.0
	All Sites	183	48.5	-	-	166	44.0	-	-	18	4.8	10	2.7	377	100.0

**TABLE IMP-7 (a): Number of Cancer Deaths by Five Year Age Group and Site (ICD-10):
2003-2004 – Males**

% = Relative Proportion of Cancers of All Sites.

Imphal West District

ICD-10	Site	0-4	5-9	10-14	15-19	20-24	25-29	30-34	35-39	40-44	45-49	50-54	55-59	60-64	65-69	70-74	75+	Unkn	Total	%
C00	Lip	-	-	-	-	-	-	-	-	-	-	-	-	-	-	-	-	-	-	-
C01-02	Tongue	-	-	-	-	-	-	-	-	-	-	-	-	2	-	-	-	-	2	2.00
C03-06	Mouth	-	-	-	-	-	-	-	-	-	-	-	-	1	-	-	-	-	1	1.00
C07-8	Salivary Gland	-	-	-	-	-	-	-	-	-	-	-	-	-	-	-	-	-	-	-
C09	Tonsil	-	-	-	-	-	-	-	-	-	-	-	-	-	-	-	-	-	-	-
C10	Oth. Oropharynx	-	-	-	-	-	-	-	-	-	-	-	-	-	-	-	-	-	-	-
C11	Nasopharynx	1	-	-	-	-	-	-	1	-	-	-	-	1	-	-	-	-	3	3.00
C12-13	Hypopharynx	-	-	-	-	-	-	-	-	-	-	-	-	-	1	-	-	-	1	1.00
C14	Pharynx Unspecified	-	-	-	-	-	-	-	-	-	-	-	-	-	-	1	1	-	2	2.00
C15	Oesophagus	-	-	-	-	-	-	-	-	-	-	1	1	1	1	1	-	-	5	5.00
C16	Stomach	-	-	-	-	-	-	-	-	1	-	1	1	4	1	2	4	-	14	14.00
C17	Small Intestine	-	-	-	-	-	-	-	-	1	-	-	-	-	-	-	-	-	1	1.00
C18	Colon	1	-	-	-	-	-	-	1	-	-	1	1	1	-	3	-	-	8	8.00
C19-20	Rectum	1	-	-	-	1	-	-	-	1	1	1	-	-	-	-	-	-	5	5.00
C21	Anus & Anal Canal	-	-	-	-	-	-	-	-	-	-	-	-	-	-	-	-	-	-	-
C22	Liver	-	-	-	1	-	-	-	1	-	-	-	-	1	-	-	1	-	4	4.00
C23-24	Gallbladder etc.	-	-	-	-	-	-	-	1	-	-	-	-	-	-	-	-	-	1	1.00
C25	Pancreas	-	-	-	-	-	-	-	-	-	-	-	-	-	-	-	-	-	-	-
C30-31	Nose, Sinuses etc.	-	-	-	-	-	-	-	-	1	-	-	-	-	-	-	-	-	1	1.00
C32	Larynx	-	-	-	-	-	-	-	-	2	-	-	-	-	-	-	-	-	2	2.00
C33-34	Lung etc.	1	1	1	-	-	-	-	1	1	1	4	5	3	4	5	3	-	30	30.00
C37-38	Other Thoracic Organs	-	-	-	-	-	-	-	-	-	-	-	-	-	-	-	-	-	-	-
C40-41	Bone	-	-	-	-	-	-	-	-	-	-	-	-	-	-	-	-	-	-	-
C43	Melanoma of Skin	-	-	-	-	-	-	-	-	-	-	-	-	-	-	-	-	-	-	-
C44	Other Skin	-	-	-	-	-	-	-	-	-	-	-	-	-	-	-	-	-	-	-
C45	Mesothelioma	-	-	-	-	-	-	-	-	-	-	-	-	-	-	-	-	-	-	-
C46	Kaposi Sarcoma	-	-	-	-	-	-	-	-	-	-	-	-	-	-	-	-	-	-	-
C47 + C49	Conn. & Soft Tissue	-	-	-	-	-	-	-	-	-	-	-	-	-	-	-	1	-	1	1.00
C50	Breast	-	-	-	-	-	-	-	-	-	-	-	-	-	-	-	-	-	-	-
C60	Penis	-	-	-	-	-	-	-	-	-	-	1	-	-	-	-	-	-	1	1.00
C61	Prostate	-	-	-	-	-	-	-	-	-	-	-	-	-	-	-	-	-	-	-
C62	Testis	-	-	-	-	-	-	-	-	-	-	-	-	-	-	-	-	-	-	-
C63	Other Male Genital	-	-	-	-	-	-	-	-	-	-	-	-	-	-	-	-	-	-	-
C64	Kidney etc.	-	-	-	-	-	-	-	-	-	-	-	1	-	-	-	-	-	1	1.00
C65	Renal Pelvis	-	-	-	-	-	-	-	-	-	-	-	-	-	-	-	-	-	-	-
C66	Ureter	-	-	-	-	-	-	-	-	-	-	-	-	-	-	-	-	-	-	-
C67	Bladder	-	-	-	-	-	-	-	-	-	-	-	-	-	-	-	-	-	-	-
C68	Uns. Urinary Organs	-	-	-	-	-	-	-	-	-	-	-	-	-	-	-	-	-	-	-
C69	Eye	-	-	-	-	-	-	-	-	-	-	-	-	-	-	-	-	-	-	-
C70-72	Brain, Nervous System	-	-	-	-	-	-	-	-	-	-	-	-	-	-	-	-	-	-	-
C73	Thyroid	-	-	-	-	-	-	-	-	-	-	-	-	-	-	-	-	-	-	-
C74	Adrenal Gland	-	-	-	-	-	-	-	-	-	-	-	-	-	-	-	-	-	-	-
C77	Sec Lymph Nodes	-	-	-	-	-	-	-	-	-	-	-	-	-	-	1	1	-	2	2.00
C78	Sec Resp & Digestive	-	-	-	-	-	-	-	-	-	-	-	-	-	-	-	-	-	-	-
C79	Sec Others	-	-	-	-	-	-	-	-	-	-	-	-	-	-	-	-	-	-	-
C81	Hodgkins Disease	-	-	-	-	-	-	-	-	-	-	-	-	-	-	-	-	-	-	-
C82-85, C96	NHL	-	-	-	1	1	-	-	-	-	-	-	-	-	2	-	1	-	5	5.00
C90	Multiple Myeloma	-	-	-	-	-	-	-	-	-	-	-	-	-	1	-	-	-	1	1.00
C91	Lymphoid Leuk.	2	-	-	-	-	-	-	-	-	-	-	-	-	-	1	-	-	3	3.00
C92-94	Myeloid Leukaemia	-	-	-	2	-	1	-	1	-	-	-	1	-	-	-	-	-	5	5.00
C95	Leukaemia Uns	-	-	-	-	-	-	-	-	-	-	-	-	-	-	-	-	-	-	-
O&U	Other and Uns	1	-	-	-	-	-	-	-	-	-	-	-	-	-	-	-	-	1	1.00
	All Sites	7	1	1	4	2	1	-	6	7	2	9	10	14	10	14	12	-	100	100.00

**TABLE IMP-7 (b): Number of Cancer Deaths by Five Year Age Group and Site (ICD-10):
2003-2004 – Females**

% = Relative Proportion of Cancers of All Sites.

Imphal West District

ICD-10	Site	0-4	5-9	10-14	15-19	20-24	25-29	30-34	35-39	40-44	45-49	50-54	55-59	60-64	65-69	70-74	75+	Unkn	Total	%
C00	Lip	-	-	-	-	-	-	-	-	-	-	-	-	-	-	-	-	-	-	-
C01-02	Tongue	-	-	-	-	-	-	-	-	-	-	-	-	-	-	-	-	-	-	-
C03-06	Mouth	-	-	-	-	-	-	-	-	-	-	-	-	-	-	-	-	-	-	-
C07-8	Salivary Gland	-	-	-	-	-	-	-	-	-	-	-	-	-	-	-	-	-	-	-
C09	Tonsil	-	-	-	-	-	-	-	-	-	-	-	-	-	-	-	-	-	-	-
C10	Oth. Oropharynx	-	-	-	-	-	-	-	-	-	-	-	-	1	-	-	-	-	1	1.45
C11	Nasopharynx	-	-	-	-	-	-	-	-	1	-	-	-	-	-	-	-	-	1	1.45
C12-13	Hypopharynx	-	-	-	-	-	-	-	-	-	-	-	-	-	-	-	-	-	-	-
C14	Pharynx Unspecified	-	-	-	-	-	-	-	-	-	-	-	-	-	-	-	-	-	-	-
C15	Oesophagus	-	-	-	-	-	-	-	1	-	-	-	-	1	-	-	-	-	2	2.90
C16	Stomach	-	-	-	-	1	-	-	1	-	-	-	-	1	-	-	-	-	3	4.35
C17	Small Intestine	-	-	-	-	-	-	-	-	-	-	-	-	-	-	-	-	-	-	-
C18	Colon	-	-	-	-	-	-	-	-	-	-	-	-	1	-	1	-	-	2	2.90
C19-20	Rectum	-	-	-	-	-	-	-	-	-	-	-	-	-	-	1	-	-	1	1.45
C21	Anus & Anal Canal	-	-	-	-	-	-	-	-	-	-	-	-	-	-	-	-	-	-	-
C22	Liver	-	-	-	-	-	-	1	-	-	2	2	-	-	-	-	-	-	5	7.25
C23-24	Gallbladder etc.	-	-	-	-	-	-	-	2	1	-	-	1	1	-	1	2	-	8	11.59
C25	Pancreas	-	-	-	-	-	-	-	-	-	-	-	-	-	-	-	-	-	-	-
C30-31	Nose, Sinuses etc.	-	-	-	-	-	-	-	-	-	-	-	-	-	-	-	-	-	-	-
C32	Larynx	-	-	-	-	-	-	-	-	-	-	-	-	-	-	-	-	-	-	-
C33-34	Lung etc.	-	-	-	-	-	-	-	1	1	1	3	3	4	5	2	4	-	24	34.78
C37-38	Other Thoracic Organs	-	-	-	-	-	-	-	-	-	-	-	-	-	-	-	-	-	-	-
C40-41	Bone	-	-	-	-	-	-	-	-	-	-	-	-	-	-	-	-	-	-	-
C43	Melanoma of Skin	-	-	-	-	-	-	-	-	-	-	-	-	-	-	-	-	-	-	-
C44	Other Skin	-	-	-	-	-	-	-	-	-	-	-	-	-	-	-	-	-	-	-
C45	Mesothelioma	-	-	-	-	-	-	-	-	-	-	-	-	-	-	-	-	-	-	-
C46	Kaposi Sarcoma	-	-	-	-	-	-	-	-	-	-	-	-	-	-	-	-	-	-	-
C47+C49	Conn. & Soft Tissue	-	-	-	-	-	-	-	-	-	-	-	-	-	-	-	-	-	-	-
C50	Breast	-	-	-	-	-	-	-	1	-	-	-	-	1	-	-	-	-	2	2.90
C51	Vulva	-	-	-	-	-	-	-	-	-	-	1	1	-	-	-	-	-	2	2.90
C52	Vagina	-	-	-	-	-	-	-	-	-	-	-	-	-	-	-	-	-	-	-
C53	Cervix Uteri	-	-	-	-	-	1	-	-	-	-	-	-	-	-	-	-	-	1	1.45
C54	Corpus Uteri	-	-	-	-	-	-	-	-	-	-	-	-	-	-	-	-	-	-	-
C55	Uterus Unspecified	-	-	-	-	-	-	-	-	-	-	-	-	-	-	-	-	-	-	-
C56	Ovary etc.	-	-	-	-	-	-	-	-	1	-	-	-	-	-	-	-	-	1	1.45
C57	Other Female Genital	-	-	-	-	-	-	-	-	-	-	-	-	-	-	-	-	-	-	-
C58	Placenta	-	-	-	-	-	-	-	-	-	-	-	-	-	-	-	-	-	-	-
C64	Kidney etc.	-	-	-	-	-	-	-	-	-	-	-	-	-	-	-	-	-	-	-
C65	Renal Pelvis	-	-	-	-	-	-	-	-	-	-	-	-	-	-	-	-	-	-	-
C66	Ureter	-	-	-	-	-	-	-	-	-	-	-	-	-	-	-	-	-	-	-
C67	Bladder	-	-	-	-	-	-	-	-	-	-	-	-	-	-	-	-	-	-	-
C68	Uns. Urinary Organs	-	-	-	-	-	-	-	-	-	-	-	-	-	-	-	-	-	-	-
C69	Eye	-	-	-	-	-	-	-	-	-	-	-	-	-	-	-	-	-	-	-
C70-72	Brain, Nervous System	-	-	-	-	-	-	-	-	-	-	-	-	-	-	-	-	-	-	-
C73	Thyroid	-	-	-	-	-	-	-	-	-	-	-	-	-	-	-	-	-	-	-
C74	Adrenal Gland	-	-	-	-	-	-	-	-	-	-	-	-	-	-	-	-	-	-	-
C77	Sec Lymph Nodes	-	-	-	-	-	-	-	-	-	-	1	-	-	-	-	-	-	1	1.45
C78	Sec Resp & Digestive	-	-	-	-	-	-	-	-	-	-	-	-	-	-	-	-	-	-	-
C79	Sec Others	-	-	-	-	-	-	-	-	-	-	-	1	-	-	-	-	-	1	1.45
C81	Hodgkins Disease	-	-	-	-	-	-	-	-	-	-	-	-	-	-	-	-	-	-	-
C82-85, C96	NHL	-	-	-	-	1	-	-	-	-	1	-	-	-	1	-	-	-	3	4.35
C90	Multiple Myeloma	-	-	-	-	-	-	-	-	-	-	-	-	-	-	-	-	-	-	-
C91	Lymphoid Leuk.	1	-	-	-	1	-	-	-	-	1	-	-	-	-	-	-	-	3	4.35
C92-94	Myeloid Leukaemia	-	1	-	2	1	-	-	-	-	-	-	-	-	1	-	-	-	5	7.25
C95	Leukaemia Uns	-	-	-	-	-	-	-	-	-	-	-	-	-	-	-	-	-	-	-
O&U	Other and Uns	1	-	-	-	-	-	-	-	-	1	-	-	1	-	-	-	-	3	4.35
	All Sites	2	1	-	2	4	1	1	6	4	6	7	6	11	7	5	6	-	69	100.00

TABLE: IMP-8(a):
Average Annual Age Specific, Crude (CR), Age Adjusted (AAR) (with Standard Error(SE)) and
Truncated (35-64 Yrs) (TR) Mortality Rate per 100,000 population: 2003-2004 - Males
Imphal West District

ICD-10	0-4	5-9	10-14	15-19	20-24	25-29	30-34	35-39	40-44	45-49	50-54	55-59	60-64	65-69	70-74	>75	CR	AAR	SE	TR
C00	-	-	-	-	-	-	-	-	-	-	-	-	-	-	-	-	-	-	-	-
C01-02	-	-	-	-	-	-	-	-	-	-	-	-	9.3	-	-	-	0.4	0.7	0.50	1.2
C03-06	-	-	-	-	-	-	-	-	-	-	-	-	9.7	-	-	-	0.2	0.4	0.39	1.2
C07-8	-	-	-	-	-	-	-	-	-	-	-	-	-	-	-	-	-	-	-	-
C09	-	-	-	-	-	-	-	-	-	-	-	-	-	-	-	-	-	-	-	-
C10	-	-	-	-	-	-	-	-	-	-	-	-	-	-	-	-	-	-	-	-
C11	2.6	-	-	-	-	-	-	2.9	-	-	-	-	9.7	-	-	-	0.6	0.9	0.53	1.8
C12-13	-	-	-	-	-	-	-	-	-	-	-	-	-	11.9	-	-	0.2	0.4	0.36	-
C14	-	-	-	-	-	-	-	-	-	-	-	-	-	-	13.9	12.3	0.4	0.5	0.37	-
C15	-	-	-	-	-	-	-	-	-	-	4.9	7.3	9.7	11.9	13.9	-	1.1	1.6	0.71	3.0
C16	-	-	-	-	-	-	-	-	3.5	-	4.9	7.3	38.6	11.9	27.9	49.0	3.0	4.2	1.15	7.4
C17	-	-	-	-	-	-	-	-	3.5	-	-	-	-	-	-	-	0.2	0.2	0.21	0.7
C18	2.6	-	-	-	-	-	-	2.9	-	-	4.9	7.3	9.7	-	41.8	-	1.7	2.2	0.81	3.6
C19-20	2.6	-	-	-	2.0	-	-	-	3.5	4.3	4.9	-	-	-	-	-	1.1	1.2	0.54	2.3
C21	-	-	-	-	-	-	-	-	-	-	-	-	-	-	-	-	-	-	-	-
C22	-	-	-	2.1	-	-	-	2.9	-	-	-	-	9.7	-	-	12.3	0.9	1.0	0.52	1.8
C23-24	-	-	-	-	-	-	-	2.9	-	-	-	-	-	-	-	-	0.2	0.2	0.18	0.6
C25	-	-	-	-	-	-	-	-	-	-	-	-	-	-	-	-	-	-	-	-
C30-31	-	-	-	-	-	-	-	-	3.5	-	-	-	-	-	-	-	0.2	0.2	0.21	0.7
C32	-	-	-	-	-	-	-	-	7.1	-	-	-	-	-	-	-	0.4	0.4	0.30	1.4
C33-34	2.6	2.3	2.0	-	-	-	-	2.9	3.5	4.3	19.7	36.6	29.0	47.7	69.7	36.8	6.5	8.5	1.59	13.7
C37-38	-	-	-	-	-	-	-	-	-	-	-	-	-	-	-	-	-	-	-	-
C40-41	-	-	-	-	-	-	-	-	-	-	-	-	-	-	-	-	-	-	-	-
C43	-	-	-	-	-	-	-	-	-	-	-	-	-	-	-	-	-	-	-	-
C44	-	-	-	-	-	-	-	-	-	-	-	-	-	-	-	-	-	-	-	-
C45	-	-	-	-	-	-	-	-	-	-	-	-	-	-	-	-	-	-	-	-
C46	-	-	-	-	-	-	-	-	-	-	-	-	-	-	-	-	-	-	-	-
C47+C49	-	-	-	-	-	-	-	-	-	-	-	-	-	-	-	12.3	0.2	0.2	0.24	-
C50	-	-	-	-	-	-	-	-	-	-	-	-	-	-	-	-	-	-	-	-
C60	-	-	-	-	-	-	-	-	-	-	4.9	-	-	-	-	-	0.2	0.2	0.25	0.8
C61	-	-	-	-	-	-	-	-	-	-	-	-	-	-	-	-	-	-	-	-
C62	-	-	-	-	-	-	-	-	-	-	-	-	-	-	-	-	-	-	-	-
C63	-	-	-	-	-	-	-	-	-	-	-	-	-	-	-	-	-	-	-	-
C64	-	-	-	-	-	-	-	-	-	-	-	7.3	-	-	-	-	0.2	0.3	0.29	0.9
C65	-	-	-	-	-	-	-	-	-	-	-	-	-	-	-	-	-	-	-	-
C66	-	-	-	-	-	-	-	-	-	-	-	-	-	-	-	-	-	-	-	-
C67	-	-	-	-	-	-	-	-	-	-	-	-	-	-	-	-	-	-	-	-
C68	-	-	-	-	-	-	-	-	-	-	-	-	-	-	-	-	-	-	-	-
C69	-	-	-	-	-	-	-	-	-	-	-	-	-	-	-	-	-	-	-	-
C70-72	-	-	-	-	-	-	-	-	-	-	-	-	-	-	-	-	-	-	-	-
C73	-	-	-	-	-	-	-	-	-	-	-	-	-	-	-	-	-	-	-	-
C74	-	-	-	-	-	-	-	-	-	-	-	-	-	-	-	-	-	-	-	-
C77	-	-	-	-	-	-	-	-	-	-	-	-	-	-	13.9	12.3	0.4	0.5	0.37	-
C78	-	-	-	-	-	-	-	-	-	-	-	-	-	-	-	-	-	-	-	-
C79	-	-	-	-	-	-	-	-	-	-	-	-	-	-	-	-	-	-	-	-
C81	-	-	-	-	-	-	-	-	-	-	-	-	-	-	-	-	-	-	-	-
C82-85,C96	-	-	-	2.1	2.0	-	-	-	-	-	-	-	-	23.9	-	12.3	1.1	1.3	0.61	-
C90	-	-	-	-	-	-	-	-	-	-	-	-	-	11.9	-	-	0.2	0.4	0.36	-
C91	5.2	-	-	-	-	-	-	-	-	-	-	-	-	-	13.9	-	0.6	0.9	0.52	-
C92-94	-	-	-	4.2	-	2.3	-	2.9	-	-	-	7.3	-	-	-	-	1.1	1.0	0.47	1.5
C95	-	-	-	-	-	-	-	-	-	-	-	-	-	-	-	-	-	-	-	-
O&U	2.6	-	-	-	-	-	-	-	-	-	-	-	-	-	-	-	0.2	0.3	0.31	-
All	18.1	2.3	2.0	8.4	4.1	2.3	-	17.6	24.7	8.6	44.4	73.1	135.2	119.3	195.1	147.0	21.6	27.8	2.85	43.9

TABLE: IMP-8(b):
Average Annual Age Specific, Crude (CR), Age Adjusted (AAR) (with Standard Error(SE)) and
Truncated (35-64 Yrs) (TR) Mortality Rate per 100,000 population: 2003-2004 - Females
Imphal West District

ICD-10	0-4	5-9	10-14	15-19	20-24	25-29	30-34	35-39	40-44	45-49	50-54	55-59	60-64	65-69	70-74	>75	CR	AAR	SE	TR
C00	-	-	-	-	-	-	-	-	-	-	-	-	-	-	-	-	-	-	-	-
C01-02	-	-	-	-	-	-	-	-	-	-	-	-	-	-	-	-	-	-	-	-
C03-06	-	-	-	-	-	-	-	-	-	-	-	-	-	-	-	-	-	-	-	-
C07-8	-	-	-	-	-	-	-	-	-	-	-	-	-	-	-	-	-	-	-	-
C09	-	-	-	-	-	-	-	-	-	-	-	-	-	-	-	-	-	-	-	-
C10	-	-	-	-	-	-	-	-	-	-	-	-	8.6	-	-	-	0.2	0.3	0.34	1.1
C11	-	-	-	-	-	-	-	-	3.5	-	-	-	-	-	-	-	0.2	0.2	0.21	0.7
C12-13	-	-	-	-	-	-	-	-	-	-	-	-	-	-	-	-	-	-	-	-
C14	-	-	-	-	-	-	-	-	-	-	-	-	-	-	-	-	-	-	-	-
C15	-	-	-	-	-	-	-	2.9	-	-	-	-	8.6	-	-	-	0.4	0.5	0.38	1.7
C16	-	-	-	-	2.0	-	-	2.9	-	-	-	-	8.6	-	-	-	0.6	0.7	0.41	1.7
C17	-	-	-	-	-	-	-	-	-	-	-	-	-	-	-	-	-	-	-	-
C18	-	-	-	-	-	-	-	-	-	-	-	-	8.6	-	12.5	-	0.4	0.6	0.42	1.1
C19-20	-	-	-	-	-	-	-	-	-	-	-	-	-	-	12.5	-	0.2	0.2	0.25	-
C21	-	-	-	-	-	-	-	-	-	-	-	-	-	-	-	-	-	-	-	-
C22	-	-	-	-	-	-	2.6	-	-	8.5	10.5	-	-	-	-	-	1.1	1.2	0.54	3.3
C23-24	-	-	-	-	-	-	-	5.8	3.5	-	-	7.9	8.6	-	12.5	20.0	1.7	1.9	0.68	3.9
C25	-	-	-	-	-	-	-	-	-	-	-	-	-	-	-	-	-	-	-	-
C30-31	-	-	-	-	-	-	-	-	-	-	-	-	-	-	-	-	-	-	-	-
C32	-	-	-	-	-	-	-	-	-	-	-	-	-	-	-	-	-	-	-	-
C33-34	-	-	-	-	-	-	-	2.9	3.5	4.2	15.7	23.7	34.3	55.6	25.0	40.0	5.1	6.7	1.40	12.1
C37-38	-	-	-	-	-	-	-	-	-	-	-	-	-	-	-	-	-	-	-	-
C40-41	-	-	-	-	-	-	-	-	-	-	-	-	-	-	-	-	-	-	-	-
C43	-	-	-	-	-	-	-	-	-	-	-	-	-	-	-	-	-	-	-	-
C44	-	-	-	-	-	-	-	-	-	-	-	-	-	-	-	-	-	-	-	-
C45	-	-	-	-	-	-	-	-	-	-	-	-	-	-	-	-	-	-	-	-
C46	-	-	-	-	-	-	-	-	-	-	-	-	-	-	-	-	-	-	-	-
C47 + C49	-	-	-	-	-	-	-	-	-	-	-	-	-	-	-	-	-	-	-	-
C50	-	-	-	-	-	-	-	2.9	-	-	-	-	8.6	-	-	-	0.4	0.5	0.38	1.7
C51	-	-	-	-	-	-	-	-	-	-	5.2	7.9	-	-	-	-	0.4	0.6	0.41	1.9
C52	-	-	-	-	-	-	-	-	-	-	-	-	-	-	-	-	-	-	-	-
C53	-	-	-	-	-	2.2	-	-	-	-	-	-	-	-	-	-	0.2	0.2	0.17	-
C54	-	-	-	-	-	-	-	-	-	-	-	-	-	-	-	-	-	-	-	-
C55	-	-	-	-	-	-	-	-	-	-	-	-	-	-	-	-	-	-	-	-
C56	-	-	-	-	-	-	-	-	3.5	-	-	-	-	-	-	-	0.2	0.2	0.21	0.7
C57	-	-	-	-	-	-	-	-	-	-	-	-	-	-	-	-	-	-	-	-
C58	-	-	-	-	-	-	-	-	-	-	-	-	-	-	-	-	-	-	-	-
C64	-	-	-	-	-	-	-	-	-	-	-	-	-	-	-	-	-	-	-	-
C65	-	-	-	-	-	-	-	-	-	-	-	-	-	-	-	-	-	-	-	-
C66	-	-	-	-	-	-	-	-	-	-	-	-	-	-	-	-	-	-	-	-
C67	-	-	-	-	-	-	-	-	-	-	-	-	-	-	-	-	-	-	-	-
C68	-	-	-	-	-	-	-	-	-	-	-	-	-	-	-	-	-	-	-	-
C69	-	-	-	-	-	-	-	-	-	-	-	-	-	-	-	-	-	-	-	-
C70-72	-	-	-	-	-	-	-	-	-	-	-	-	-	-	-	-	-	-	-	-
C73	-	-	-	-	-	-	-	-	-	-	-	-	-	-	-	-	-	-	-	-
C74	-	-	-	-	-	-	-	-	-	-	-	-	-	-	-	-	-	-	-	-
C77	-	-	-	-	-	-	-	-	-	-	5.2	-	-	-	-	-	0.2	0.3	0.26	0.8
C78	-	-	-	-	-	-	-	-	-	-	-	-	-	-	-	-	-	-	-	-
C79	-	-	-	-	-	-	-	-	-	-	-	7.9	-	-	-	-	0.2	0.3	0.32	1.0
C81	-	-	-	-	-	-	-	-	-	-	-	-	-	-	-	-	-	-	-	-
C82-85,C96	-	-	-	-	2.0	-	-	-	-	4.2	-	-	-	11.1	-	-	0.6	0.7	0.45	0.8
C90	-	-	-	-	-	-	-	-	-	-	-	-	-	-	-	-	-	-	-	-
C91	2.8	-	-	-	2.0	-	-	-	-	4.2	-	-	-	-	-	-	0.6	0.7	0.45	0.8
C92-94	-	2.5	-	4.1	2.0	-	-	-	-	-	-	-	-	11.1	-	-	1.1	1.1	0.51	-
C95	-	-	-	-	-	-	-	-	-	-	-	-	-	-	-	-	-	-	-	-
O&U	2.8	-	-	-	-	-	-	-	-	4.2	-	-	8.6	-	-	-	0.6	0.9	0.54	1.9
All	5.5	2.5	-	4.1	7.8	2.2	2.6	17.3	14.2	25.5	36.7	47.5	94.3	77.8	62.4	60.0	14.8	17.9	2.22	35.2