

6. REGULAR ACTIVITIES

6.1. Integrated Counseling and Training Centre (ICTC) and State Referral Laboratory (SRL) for HIV

This is an ongoing activity pertaining to HIV testing and counseling. Clients numbering to 1057 were tested this year for HIV, of which 121 turned out to be reactive. The centre also worked as a testing centre for the sentinel surveillance program during October 2007 to January 2008. A total of 7000 specimens were tested from 19 sentinel sites for ANC, STD and FSW.



Blood collection for HIV testing

6.2. National Nutrition Monitoring Bureau, MP Unit

National nutritional monitoring bureau (NNMB) Madhya Pradesh unit is functioning from this institute since 1987 covering both Madhya Pradesh and Chhattisgarh. In the year 2007-08 “Assessment of Diet & nutritional Status of the Tribal Population Second Repeat Survey” has been planned by the central team at NIN, Hyderabad. Apart from collection of current dietary information, anthropometric assessment of the tribal population, it has also been planned to assess the prevalence of different morbidity, obesity and hypertension among adult male and females above 20 years. A total of 4269 households from 108 villages were

covered from Madhya Pradesh and Chhattisgarh for anthropometry and clinical signs. A total of 1080 households were covered for the diet survey. The survey is completed and data has been sent to NIN, Hyderabad for analysis.

6.3. Sickle Cell Clinic

Centre runs a sickle cell clinic at N.S.C.B. Medical College, Jabalpur and offers the facilities for diagnosis of haemoglobinopathies to the patients of the areas. During the period of April 2007 to March 2008, a total of 824 persons suspected to be suffering from hemolytic anaemia and referred by various public sector hospitals were analysed for haemoglobinopathies. During the period 116 persons were identified as sickle cell disease, 92 as sickle cell trait, 46 as α -thalassaemia trait, and 8 as α -thalassaemia major. These patients and their parents were briefed about presentation and possible prognosis of the disorders and the preventive measures. The sickle cell disease patients were requested to get them registered in the Sickle Cell Clinic.



Sickle cell clinic at NSCB Medical College, Jabalpur



6.4. Library

The library of the centre continues to cater the documentation and information needs of the scientists, other research staff of RMRCT as well as other local institutes like NSCB Medical College, Veterinary College, Home Science College, Rani Durgawati Vishwavidyalaya, etc. It also extent services to research personnel from other universities /institutes of national and international standard.

Library is now providing the LAN facilities to scientists and other research staff of the centre through broadband connection for literature search for their research work.

Now library has acquired modern furniture, air-conditioners and compactors for its reading rooms. The library is also a member of recently launched consortium of Ministry of Health and Family Welfare (MoHFW) and National Medical Library (NML), New Delhi which facilitates accessing to 1500 journal including 850 e-journals. It also provides photocopying facility at a nominal rate.

Library has following resources:

New Additions	
Books/Journals	341
Total subscription	54
Total Library collection	
Books	1143
WHO publications	568
Bound Foreign Journals	1114
Bound Indian Journals	740
MEDLINE CDs	21
Others CDs	22
Census Floppies	60



6.6. Human Resource Development

The centre provides technical guidance and infrastructure facilities to PhD/ MD/ MSc students for conducting their research work for dissertation. Six PhD students are enrolled at the centre. Twelve students from different universities/institutions of the country had also carried out their Post-graduation dissertation work under the supervision of centre's scientists.



Students working in laboratory

6.7. RMRCT Publication

(a) Tribal Health Bulletin

Centre published a biannual and bi-lingual 'Tribal Health Bulletin', which published peer-reviewed papers related to various health aspects. This year Vol. 11, No.1 & 2 is published.





RMRCT Annual Report 2007-08

(b) RMRCT Update

Centre also published biannual RMRCT Update, which highlights the regular activities of the Centre. This year Vol. 4, No.2, 2007 & Vol.5, No.1, 2008 are published.



(c) Proceedings of National Symposium

Centre published proceedings of National Symposium on Tribal Health held on Oct. 2006.

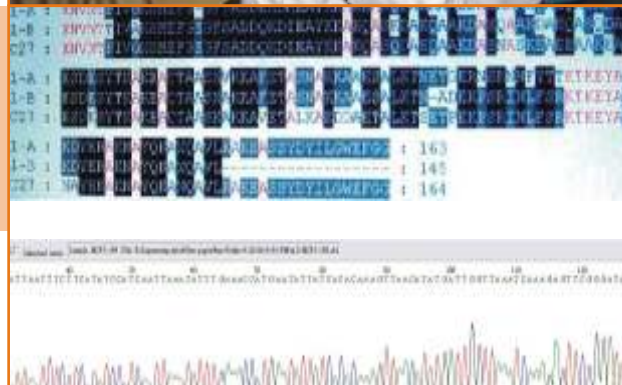


6.8. Establishment of New Laboratory/facilities

DNA sequencing facility



DNA sequencing of *Plasmodium falciparum* gene (MSP-1, MSP-2, MSP-3 and Pfrct)



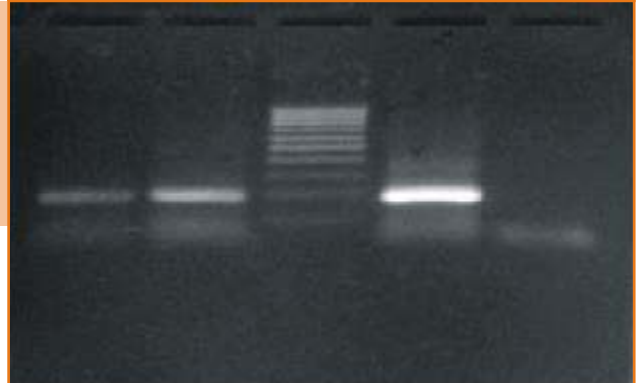
Lymphocyte proliferation assay against different malarial antigen radioactivity (^3H)



Sporozoite ELISA for determination of sporozoite in *Plasmodium falciparum* & *Plasmodium vivax*



Sibling speciation of *An. fluviatilis* by PCR



A liquid nitrogen plant of capacity 200 liters was recently installed at the centre to provide uninterrupted supply of liquid nitrogen for cryopreservation of biological specimens for longer duration

