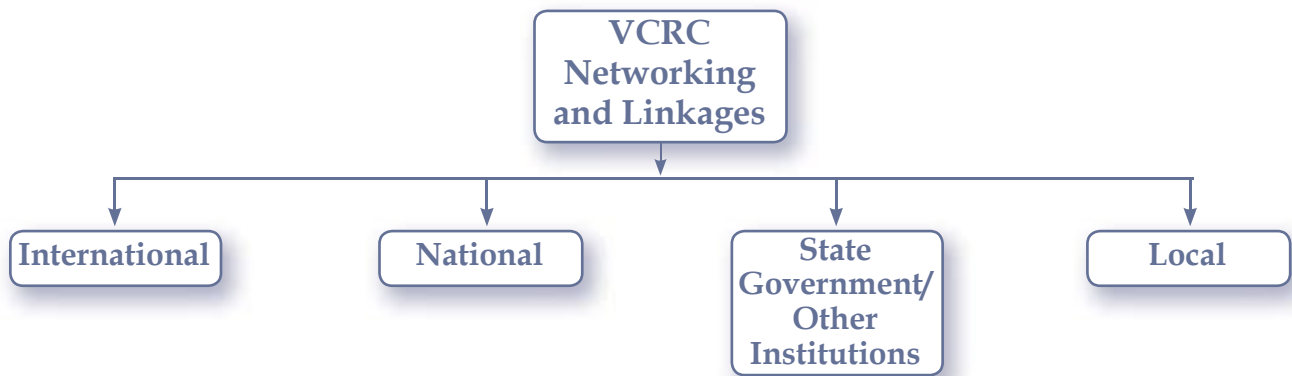


# 8. Networking and Linkages



## International

### 1. Scientific/Policy/Research Organization

- WHO, Geneva
- WHO, SEARO
- C.D.C.

### 2. University/Academic Institutions

- Erasmus university, Netherlands
- Emory university, U.S.A
- University Sains Malaysia, Kuala Lumpur, Malaysia
- International Centre for Genetic engineering and Biotechnology, New Delhi

### 3. Comprehensive Vector Control training by V.C.R.C. for fellows of Department of Health from

- Sri Lanka
- Myanmar
- Indonesia

## National

### 1. Departments/Organizations of Govt. of India

- Ministry of Health & Family Welfare, New Delhi
- National Vector Borne Disease Control Programme, New Delhi
- National Institute of Communicable Diseases, New Delhi
- Department of Science and Technology, New Delhi
- Department of Biotechnology, New Delhi
- National Research Development Corporation, New Delhi
- Indian Standard Institute, Kolkatta
- Indian Space Research Organization, Bangalore & Sriharikotta

### 2. Institutes and Organizations of Govt. of India

- Indian Council of Medical Research, New Delhi
- National Institute of Epidemiology, Chennai
- Tuberculosis Research Centre, Chennai
- Regional Medical Research Centre, Bhubaneswar
- Regional Medical Research Center, Dibrugarh

- Regional Medical Research Center, Port Blair
- Desert Medicine Research Centre, Jhodpur
- National Institute of Virology, Pune
- Centre for Research in Medical Entomology, Madurai
- Malaria Research Centre, Delhi

### Sate Government/Other Institutions

#### 1. Government Departments (Other states)

- HRDI, DANIDA, Villupuram
- IVCZ, Hosur
- Department of Public Health, Tamil Nadu, Chennai
- Department of Public Health, Andhra Pradesh, Hyderabad
- Department of Public Health, Karnataka, Bangalore
- Department of Public Health, Kerala, Trivendrum
- Department of Public Health, Orissa, Bhubaneshwar
- Government Nursing School, Chennai
- Aadhiparasakthi Institute of Paramedical Sciences, Melmaruvathur, Tamil Nadu

#### 2. University / Academic Institutions

- NIMHANS, Bangalore
- Madras university, Chennai
- Anna university, Chennai
- Tamil Nadu Agriculture university, Coimbatore
- Annamalai university, Chidambaram
- Rajiv Gandhi University of Health services, Bangalore
- Mysore university, Mysore

### Local

#### 1. Government of India Departments

- Air/DOORDARSHAN, Pondicherry
- National Informatics Centre

#### 2. Sate Government departments

- Department of Health and Family Welfare, Pondicherry
- National Vector Borne Disease Control programme, Pondicherry
- Social welfare Department, Pondicherry
- Pondicherry Pollution Control Committee

#### 3. Universities/Academic Institutions

- Pondicherry university
- JIPMER, Pondicherry
- PIMS, Pondicherry
- AVMC, Pondicherry
- RGVC, Pondicherry
- MTIHS, Pondicherry
- French Institute, Pondicherry
- General Hospital, Pondicherry
- Cluny Hospital, Pondicherry